

THE MUST HOTELS



BY ARTEH®



THE MUST HOTELS



BY ARTEH®



THE MUST HOTELS



BY ARTEH®

ARTEH® - Hotels and Resorts is an Independent Soft Brand Hotel Chain focusing on Hotel Promotion, Marketing and e-Distribution. In this guide you will find an Exclusive Collection with Charming, Luxurious, Design and Historical Boutique Hotels and Resorts selected by ARTEH®.

The ARTEH® Hotels distinguish themselves by the richness of the history, the style of the architecture, the design of the decor, the comfort of the rooms, the beauty of the setting and the care offered to guests.

The hotels are historical or contemporary in design, built in renovated stately homes, convents or palaces, in small houses, bungalows or buildings. The hotels are boutique sized or resorts, charm or luxury inspired, with classic or modern style, with rustic or elegant ambiance. The hotels are located in cities, near beaches, at the country side or in the mountains.

They are the ideal places to go away for a weekend, enjoy a vacation or organize a special event, a conference or a business meeting. They are the perfect places to delight in a gourmet meal, experience a relaxing SPA treatment, improve your golf handicap, enjoy water or adventure sports, discover local heritage, explore nature or simply rest and escape from daily stress.

They will allow you to experience Charm, feel Luxury, touch Design, live History or discover Nature. They are "The Must Hotels".



INFORMATION, PROMOTIONS, SPECIAL OFFERS, RESERVATIONS AND NEWS:
WEBSITE: WWW.ARTEH-HOTELS.COM | TEL.: + 351 21 780 34 70 | FAX: + 351 21 780 34 79 | EMAIL: INFO@ARTEH-HOTELS.COM

Here comes a top-of-the-range
special system to inject points.



Forget everything you've ever seen in loyalty programmes. Get ready for a top-of-the-range offer, designed to give you maximum output and top performance, **equipped with a series of unique experiences and a special system of points injection.** Points that are worth privileges and exclusive offers at the charming ARTEH® - Hotels and Resorts and other ultimate partners.

A card like this is not any old card; it's a machine. Get privileged.





WWW.ARTEH-HOTELS.COM

THE MUST HOTELS



BY ARTEH®

INDEX

INDEX

ANDORRA

Hotel Grau Roig / Grau Roig	15
-----------------------------	----

BRAZIL

Pousada Vila Kalango / Jericoacoara	19
Pousada Rancho do Peixe / Jericoacoara - Preá Beach	20
Toca da Coruja / Tibau do Sul - Pipa Beach	21
Kenoa Exclusive Beach SPA & Resort / Barra de São Miguel	22
Tivoli Ecoresort Praia do Forte / Mata de São João - Forte Beach	23
Brava Hotel / Búzios - Armação de Búzios	24

FRANCE

Hôtel Le Lavoisier / Paris	27
Hospes Lancaster / Paris	28
Hôtel Fouquet's Barrière / Paris	29
Pershing Hall / Paris	30
Hôtel Duo / Paris	31
Hôtel Sezz Paris / Paris	32
Hôtel Avenue Lodge / Val d'Isère	33
Hôtel Sezz Saint-Tropez / Saint-Tropez	34

INDIA

Rambagh Palace / Jaipur	37
Umaid Bhawan Palace / Jodhpur	38
Taj Lake Palace / Udaipur	39
Taj Falaknuma Palace / Hyderabad	40

ITALY

Hotel Regency / Florence	43
Hotel Lord Byron / Rome	44
Le Sirenuse / Positano	45
Capri Palace / Capri - Anacapri	46

MOROCCO

Terre Resort & SPA / Marrakech	49
Sublime Ailleurs / Marrakech	50
Dar Zemora / Marrakech	51
Dar Seven / Marrakech	52
Dar One / Marrakech	53
Villa Margot / Marrakech	54
Kasbah Bab Ourika / Ourika Valley	55

PORTUGAL

Convento dos Capuchos / Monção	59
Pousada Monte de Santa Luzia / Viana do Castelo	60
Casa Melo Alvim / Viana do Castelo	61
Pousada São Vicente / Braga	62
Pousada Santa Marinha / Guimarães	63
CS Vintage House Hotel / Pinhão	64
Bessa Hotel / Oporto	65
Hotel Infante Sagres / Oporto	66
Hotel Teatro / Oporto	67
Pousada Palácio do Freixo / Oporto	68
Pestana Porto / Oporto	69
Aquapura Douro Valley / Lamego - Samodães	70
Douro Palace Hotel Resort & SPA / Baião - Santa Cruz do Douro	71
Casas do Côro / Mèda - Marialva	72
Pousada de Viseu / Viseu	73
Palácio dos Melos / Viseu	74
Pousada Convento de Belmonte / Belmonte	75
Pousada Convento do Desagravo / Vila Pouca da Beira	76
Palácio da Lousã / Lousã	77
Hotel Lusitano / Golegã	78
Areias do Seixo / Santa Cruz	79
Tivoli Palácio de Seteais / Sintra	80
Hotel Albatroz / Cascais	81
Villa Albatroz / Cascais	82
Senhora da Guia / Cascais	83
Grande Real Villa Itália / Cascais	84
Farol Design Hotel / Cascais	85
Real Palácio / Lisbon	86
Hotel Aviz / Lisbon	87
Hotel Britania / Lisbon	88
Hotel Lisboa Plaza / Lisbon	89
Tivoli Jardim / Lisbon	90
Heritage Av Liberdade / Lisbon	91
Solar do Castelo / Lisbon	92
Bairro Alto Hotel / Lisbon	93
Pestana Palace / Lisbon	94
York House / Lisbon	95
As Janelas Verdes / Lisbon	96
Altis Belém Hotel & SPA / Lisbon	97
Pátio dos Solares / Estremoz	98
Pousada Nossa Senhora da Assunção / Arraiolos	99
Pousada Dom João IV / Vila Viçosa	100
Convento de São Paulo / Redondo	101
Convento do Espinheiro / Évora	102
M'AR De AR Aqueduto / Évora	103
Pousada Dom Afonso II / Alcácer do Sal	104
Pousada Vale do Gaião / Torrão	105
Hotel Dom Carlos Regis / Monchique	106
Hotel Central / Monchique	107
Estalagem Dom Lourenço / Monchique	108
Vila Joya / Albufeira - Guia	109
Pousada Convento da Graça / Tavira	110
Pousada Palácio de Estoi / Faro - Estoi	111
Monte do Casal / Faro - Estoi	112
Pousada Infante / Sagres	113

INDEX

INDEX

Memmo Baleeira / Sagres	114
Quinta das Mercês / Azores - Terceira	115
Pousada São Sebastião / Azores - Terceira	116
Convento de São Francisco / Azores - São Miguel	117
Hotel do Colégio / Azores - São Miguel	118
Hotel Porto Santo & SPA / Madeira - Porto Santo	119
Estalagem da Ponta do Sol / Madeira	120
Choupana Hills Resort & SPA / Madeira	121
The Vine Hotel / Madeira	122
Quinta da Casa Branca / Madeira	123
Quinta da Bela Vista / Madeira	124

SOUTH AFRICA

Cape Grace / Cape Town	127
Pezula Resort Hotel & SPA / Knysna	128

SPAIN

La Pleta / Baqueira	131
Hospes Villa Paulita / Puigcerdà	132
Posada Casa del Abad / Palencia - Ampudia	133
Can Bonastre Wine Resort / Barcelona - Masquefa	134
ÀBaC Restaurant & Hotel / Barcelona	135
Hotel Cram / Barcelona	136
Neri H&R / Barcelona	137
Mas Passamaner / Tarragona - La Selva del Camp	138
Hospes Madrid / Madrid	139
De las Letras H&R / Madrid	140
Hospes Palau de la Mar / Valencia	141
Convento de La Parra / Badajoz - La Parra	142
Casa Palacio Conde de la Corte / Badajoz - Zafra	143
Hospes Américo / Alicante	144
Las Casas del Cónsul / Jaén - Úbeda	145
Hospes Palacio del Bailío / Córdoba	146
Hotel Casa de Carmona / Seville - Carmona	147
Hospes Las Casas del Rey de Baeza / Seville	148
Hospes Palacio de los Patos / Granada	149
Barceló La Bobadilla / Granada - Loja	150
Hotel Rural Sant Ignasi / Balearic Islands - Menorca	151
Hotel Rural Son Mas / Balearic Islands - Mallorca	152
Hospes Maricel / Balearic Islands - Mallorca	153
Hotel Rural Es Cucons / Balearic Islands - Ibiza	154
Quilibra Aguas de Ibiza / Balearic Islands - Ibiza	155

THE NETHERLANDS

The Dylan / Amsterdam	159
-----------------------	-----

UNITED KINGDOM - ENGLAND

Sanctum Soho Hotel / London	163
The Goring Hotel / London	164

to **ultimate** experience

The top-of-the-range
loyalty programme
has arrived.



The top-of-the-range loyalty programme has arrived, exclusively for BP *Ultimate* drivers. This new card is equipped with all the advantages of BP *premierplus*, as well as original full extras: **double points and unique experiences on offer when you fill up with BP *Ultimate***. If you wish to break with routine, this card gives you access to the charming ARTEH® - Hotels and Resorts Hit the road with a top-of-the-range, and happy driving.

Discover more at your portuguese BP dealer or visit www.bpultimateexperience.pt



GUEST 1 CHILLOUT

BY ARTEH®



Welcome to Guest 1 CHILLOUT.

In this CD you'll find a compilation of tunes by various artists to help you relax in those special moments.

WWW.ARTEH-HOTELS.COM

THE MUST HOTELS



BY ARTEH®

ANDORRA



WWW.ARTEH-HOTELS.COM

HOTEL GRAU ROIG

A SECRET AMONG OCHRE COLOURED MOUNTAINS AND BLUE LAKES.



When the road that we travel finishes and the mountain begins, in the path of the old Pessons glacier in Andorra, Hotel Grau Roig can be spotted right beside the resort lifts.

From the outside you will notice the charm of the typical architecture, when inside you will feel the seduction of the innovative spaces. Natural woods are mixed with modern furniture, textures and dry colours are played with, and a rustic environment is transformed into a welcoming and elegant atmosphere.

As for the rooms, you can choose between one with a more classical style and the recently renovated ones, with the same inspiration and innovation of the common spaces, and fully equipped. There is also a choice in the restaurants: choose the traditional mountain flavours or the minimalist cuisine accompanied by a good wine in the Theatre of Wine.

Here everything was thought to fill your days. There is a reading room to read a book or browse the internet, a Jazz Room to mingle and drink a cocktail to the sound of pleasant melodies, a Kids Club for the youngest to play and a SPA to relax and recover from an intense day on the slopes.

But it's not only the white of the mountain in Winter that we underline, there is also the serene sunset in Autumn, the walks in green valleys during Summer and the explosion of colours during Spring. The Hotel Grau Roig deserves a visit at any time of the year!

ANDORRA - GRAU ROIG

ADDRESS:

Ski Resort Grandvalira - Grau Roig Sector
AD200 Grau Roig
Andorra

GPS: 42° 31' 59.18" N | 01° 42' 03.65" E

Website: <http://hotelgrauroig.arteh-hotels.com>

FACILITIES

Rooms: 37 | Suites: 5

Bar | Fireplace | Gym / Fitness Area | Internet Access |
Jacuzzi | Laundry | Library | Massages | Pets Allowed |
Restaurant | Sauna | SPA | Steam / Turkish Bath | Swimming Pool
(Indoor) | TV Lounge



THE MUST HOTELS



BY ARTEH®

BRAZIL



WWW.ARTEH-HOTELS.COM

POUSADA VILA KALANGO

WATCH AS THE DUNES APPLAUD THE SUN KISSING THE SEA.



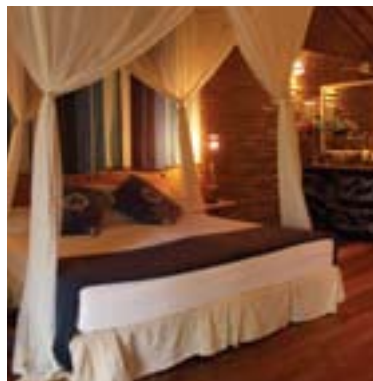
The Pousada Vila Kalango was built in Jericoacoara, within a vast garden among coconut and cashew trees, facing the sea and leaning against the most renowned dune to witness the best sunset in the Brazilian Northeast.

The atmosphere is relaxed and comfortable with a rustic decor that also manages to convey a special elegant charm. The interior houses picturesque handicraft and furniture made of wood, coconuts, straw and twigs.

The pousada offers several types of rooms, all ample and designed to benefit from the best natural ventilation. The walls are made of clay brick, the roofs of Carnauba Palm straw and the floor of Moracatiara wood, all harmoniously blending into the surrounding landscape.

There are apartments with a view of the garden, bungalows hidden in the garden and also huts on stilts that stand three metres above the ground and look out over the sea. Each of these dwellings has a precious hammock, ideal for relaxing and nodding off to the sound of the wind and the sea.

A Brazilian cuisine restaurant, a pool with a panoramic view and a space for revitalizing open air massages are also available. A few metres away, you have the beach to enjoy during the day, and a few minutes further the lively bars and clubs of Jeri to explore during the evening.



BRAZIL - JERICOACOARA

ADDRESS:
Rua das Dunas, 30
62598-000 Jericoacoara
Brazil

GPS: 02° 47' 49.61" S | 40° 31' 03.34" W

Website: <http://pousadavilakalango.arteh-hotels.com>

FACILITIES

Rooms: 7 | Bungalows: 8 | Stilt Houses: 9

Bar | Internet Access | Laundry | Massages | Restaurant | Shop |
Swimming Pool

POUSADA RANCHO DO PEIXE

TO LIVE AND FEEL THE SAND, THE SEA, THE SUN AND THE BREEZE OF A TROPICAL BEACH.

Behind the dunes and a coconut grove, in the Jericoacoara national park in the Brazilian Northeast lies the Pousada Rancho do Peixe, a private and tranquil retreat facing the sea on Preá Beach.

Designed by the architect Gui Mattos and built entirely from local materials, this pousada's design is simple and rustic without detracting from its charm or sacrificing any comfort in the spaces, and also allowing pure integration with nature.

Accommodation is distributed among ample bungalows made of wood with a deck and a balcony, placed either on the beach or on the coconut grove with a sea view. Appropriate equipment for your vacation is provided with special mention needed for the typical hammock used for relaxing at sunset.

The meals are catered for at the bar and at the restaurant specializing in Brazilian cuisine with Mediterranean influences. The flavours are delicious and the products very fresh, whether fished in the sea or harvested from the Pousada's organic farm.

The vast expanse of beach and sea suggest tranquil horseback rides along the sand, the exhilarating feeling of climbing and descending dunes in a buggy and the adrenaline rush of kite and windsurfing. The amicable and happy staff of the Pousada Rancho do Peixe will care for you.



BRAZIL - JERICOACOARA - PREÁ BEACH

ADDRESS:

Rua da Praia, s/n - Praia do Preá
62595-000 Jericoacoara
Brazil

GPS: 02° 49' 01.30" S | 40° 24' 24.69" W

Website: <http://pousadaranchodopeixe.arteh-hotels.com>

FACILITIES

Bungalows: 16

Bar | Internet Access | Laundry | Massages | Restaurant |
Swimming Pool



TOCA DA CORUJA

ENJOY DRINKING COCONUT WATER UNDER THE SHADE OF A TROPICAL GARDEN.



The Toca da Coruja was born next to the beach in 1991 when Pipa in Natal was still a small and unknown fishing town. It is nestled in a vast area of fruit trees and tropical gardens, protected by monkeys, iguanas and humming-birds.

This hotel has followed the development of the region and has also grown with it, becoming even more welcoming yet retaining its rustic charm, refinement and the simplicity that make it distinct.

The accommodation is distributed throughout bungalows and chalets that are harmoniously integrated into the garden and decorated with pieces of traditional handicrafts that can be purchased in the shop. For relaxation, there are the typical Brazilian hammocks on the balconies and in the luxury rooms there are the hydromassage tubs in classic style.

Besides the restaurant that offers fusion dishes with regional flavours, there is also a bar that serves the swimming pools, a steam sauna, a gym area and small rooms for games and reading.

Surrounding this refuge there is the ideal beach for perfecting a tan or diving into the tepid waters, an ecological sanctuary with trails to explore or exciting buggy rides to experience. Before returning to the Toca da Coruja, the evening can also be livened up in the bars and discos of Pipa.

BRAZIL - TIBAU DO SUL - PIPA BEACH

ADDRESS:

Av. Baía dos Golfinhos, 464 - Praia de Pipa
59178-000 Tibau do Sul
Brazil

GPS: 06° 13' 45.82" S | 35° 03' 08.29" W

Website: <http://tocadacoruja.arteh-hotels.com>

FACILITIES

Bungalows: 17

Bar | Garden | Gym / Fitness Area | Internet Access | Jacuzzi |
Laundry | Private Car Park | Restaurant | Sauna | Shop |
Solarium | Swimming Pool



KENOA EXCLUSIVE BEACH SPA & RESORT

AWAKEN YOUR SENSES AND DISCOVER TRANQUILLITY.

It's on the golden sand beach and turquoise-blue ocean of the Barra de São Miguel, barely 30 kilometres from Maceió, that we find one of the most beautiful paradises of the Brazilian Northeast and the Kenoa Exclusive Beach SPA & Resort.

The construction of this resort was well planned and took into consideration the ecological concern of preserving native vegetation. The various spaces, inspired by the primitive forms and natural essences, absorb the surrounding landscape, offering plenty of style and refined details. Everything was designed to satisfy the desires of privacy, tranquillity, luxury and comfort.

The harmonious interconnection with nature is also present in the suites and villas that offer magnificent panoramic views, some with an interior garden and private heated swimming pool, with an infinite border that extends towards the sea and horizon.

The Kaamo restaurant, wine bar and lounge, was conceived to awake your senses. The culinary creations of the famous chef César Santos and the selection of wines arrest our eyes as well as our smell and taste. In the lounge of intimate feel we watch the sea, we touch comfortable cushions and puffs, while we are rocked by smooth ambient music.

The Kilombo SPA, which specializes in relaxation, receives us with rituals, massages and exotic therapies based on spices that take us on a journey to the world of sensations.



BRAZIL - BARRA DE SÃO MIGUEL

ADDRESS:

Rua Escritor Jorge de Lima, 58 - Barramar
57180-000 Barra de São Miguel
Brazil

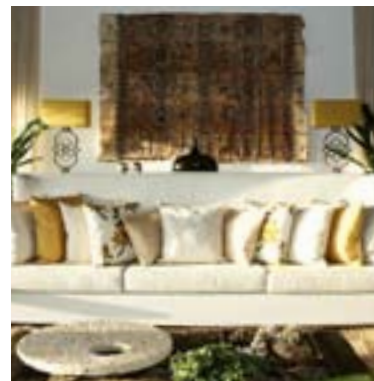
GPS: 09° 48' 58.24" S | 35° 52' 29.35" W

Website: <http://kenoalexclusivebeachsparesort.arteh-hotels.com>

FACILITIES

Suites: 11 | Villas: 12

Bar | Driving Range | Event Space(s) | Garage | Garden | Gym /
Fitness Area | Internet Access | Jacuzzi | Laundry | Library |
Massages | Private Car Park | Restaurant | Sauna | Shop |
Solarium | SPA | Steam / Turkish Bath | Swimming Pool



TIVOLI ECORESORT PRAIA DO FORTE

BALANCE AND HARMONY IN A NATURAL PARADISE.



Sheltered in an immense natural reserve, surrounded by 12 kilometres of beach and a lush coconut grove, an hour away from Salvador, the Tivoli Ecoresort Praia do Forte is a holiday destination that champions the well-being of the guests and respect for the harmony of nature.

The development plan of the former Praia do Forte estate allowed the creation of this resort where one can enjoy this paradise in direct contact with nature, yet the preservation of the environment and the culture of the local community are guaranteed.

In this idyllic setting replete with coconut trees and beaches every detail has been conceived to offer a fulfilling stay and attentive service. The spaces are comfortable with an elegant rustic charm and during the day one may simply relax in the sun or enjoy the numerous leisure activities available.

The nautical centre, the eight swimming pools, the tennis courts, the restaurants offering international and local Bahia cuisine, as well as the Thalasso SPA should be highlighted. At the SPA, a sanctuary to health and beauty, different treatments that work harmony of the body and mind are offered.

As an alternative for a day out, and quite close to the resort, one can explore the ecological reserves and lagoons, discover the beaches where the sea turtles come to lay their eggs or seek out the whale or sea coral observation sites. At the end of the day, admire the sunset from the balcony of your room within this marvelous tropical frame.

BRAZIL - MATA DE SÃO JOÃO - FORTE BEACH

ADDRESS:

Avenida do Farol, s/n - Praia do Forte
48280-000 Mata de São João
Brazil

GPS: 12° 34' 51.20" S | 38° 00' 53.39" W

Website: <http://tivoliecoresortpraiaodoforte.arteh-hotels.com>

FACILITIES

Rooms: 292

Bar | Children's Pool | Event Space(s) | Games Room | Garden | Grill | Gym / Fitness Area | Internet Access | Jacuzzi | Laundry | Library | Massages | Private Car Park | Restaurant | Sauna | Shop | SPA | Steam / Turkish Bath | Swimming Pool | TV Lounge



BRAVA HOTEL

ENJOY DAYS AT THE BEACH AND CHILL OUT NIGHTS.

Located on a cliff facing Brava beach in Búzios, Brazil, the contemporary Brava Hotel with its New Mexico style and innovative architecture for the region is the creation of Marcelo de la Peña.

The overall mood of the spaces is one of tranquillity and relaxation, where the light colours of the various fabrics contrast with the browns of the wood used in the decor. Inside, the extravagant doors and high ceilings stand out, on the outside emphasis falls on the swimming pool's panoramic terrace with superb views of the horizon.

In the rooms, distinctly minimalist in style, a similar view onto the hills and the sea can be appreciated, especially from the vast terraces belonging to the spacious presidential lofts.

At the restaurant, international cuisine is served and at the lobby's ample bar one has the opportunity to enjoy a drink whilst listening to live music. The hotel also has space available for work meetings and special events can be organised on the grounds.

Enjoy the private boat trips along the coast whilst appreciating the numerous beaches and savouring a romantic lunch. In the evening head to the Rua das Pedras and join the excitement of the vibrant Búzios nightlife.



BRAZIL - BÚZIOS - ARMAÇÃO DE BÚZIOS

ADDRESS:

Rua 17, Lote 14 - Quadra 0 - Praia Brava
28950-000 Armação de Búzios
Brazil

GPS: 22° 45' 21.21" S | 41° 52' 29.54" W

Website: <http://bravahotel.arteh-hotels.com>

FACILITIES

Rooms: 27 | Suites: 5

Bar | Event Space(s) | Games Room | Gym / Fitness Area |
Internet Access | Laundry | Massages | Pets Allowed | Private Car
Park | Restaurant | Sauna | Solarium | Swimming Pool



THE MUST HOTELS



BY ARTEH®

FRANCE



WWW.ARTEH-HOTELS.COM

HOTEL LE LAVOISIER

CHARM AND ELEGANCE WITH A VIEW OF THE CITY OF LIGHT.



In the heart of Paris, near the Rue Saint Honoré, between the Place de la Madeleine and the Saint Augustin Church, lies an elegant mid-19th century building, the distinguished Hôtel Le Lavoisier.

Inside one finds innovative and contemporary interior design characterised by pastel hues and neo-classical furniture that create a feel of charm and serenity.

The renovated and fully equipped rooms were decorated with the exacting needs of today as well as the comfort and the well-being of the guests in mind.

The rooms display warm welcoming colours that are harmoniously matched with paintings and distinctive antique furniture, and some even have their own private terrace.

The Hotel Le Lavoisier's central location is perfect for discovering the vibrant and luminous Paris, exploring the Champs-Élysées, visiting the Place de la Madeleine and Concorde, shopping at the main couturier's stores on the famous Rue Faubourg Saint Honoré and savouring the specialities of French cuisine.



FRANCE - PARIS

ADDRESS:
Rue Lavoisier, 21
75008 Paris
France

GPS: 48° 52' 25.67" N | 02° 19' 13.03" E

Website: <http://hotellelavoisier.arteh-hotels.com>

FACILITIES

Rooms: 26 | Suites: 4

Bar | Internet Access | Laundry

HOSPES LANCASTER

DETAILS OF LUXURY AND ELEGANCE.

In Paris, two steps from the Champs-Élysées and the Arc du Triomphe, stands the intimate and luxurious Hospes Lancaster, a hotel rich in history and a favourite with royalty and with the art and show business celebrities.

The building was built in 1889 for Spanish nobility and was later acquired by Emile Wolf, the famous hotelier responsible for its transformation and inauguration as a hotel in 1930. In 1996 it was again remodelled according to the philosophy of its creator, the perfect harmony between the old and the new.

The interior holds a vast collection of artworks and antiques, from clocks to candelabra, including tapestries, crystal and porcelain. Utmost attention to detail has been given and one experiences a classical and elegant setting, replete with comfort and good taste.

At La Table du Lancaster, a restaurant of more modern lines, or at the adjacent Zen garden, a gourmet experience is recommended. Michel Troisgros, the chef, has taken his inspiration from his travels and origins in Italy to create a menu with a characteristic style that surprises with its lively, remarkable and sharp flavours.

Become acquainted with the Hospes Lancaster, witness its attentive service and experience the charm that captivated King Humberto of Italy, Marlene Dietrich, Greta Garbo or Sir Alec Guinness. Accept the invitation to be the next famous person to stay at the suites with a view onto the Eiffel Tower.



FRANCE - PARIS

ADDRESS:
Rue de Berri, 7
75008 Paris
France

GPS: 48° 52' 18.48" N | 02° 18' 10.69" E

Website: <http://hospeslanchester.arteh-hotels.com>

FACILITIES

Rooms: 46 | Suites: 11

Bar | Event Space(s) | Fireplace | Gym / Fitness Area | Internet
Access | Laundry | Library | Pets Allowed | Private Car Park |
Restaurant | Sauna



HÔTEL FOUQUET'S BARRIÈRE

A TRUE PALACE WITH ROYAL SERVICE IN THE GOLDEN TRIANGLE.



At the George V and Elysian Fields crossroad, in one of the most charming and glamorous environments in the world, in the centre of culture, fashion and luxury of Paris, the fabulous Hôtel Fouquet's Barrière arises, the first grand hotel of the city to receive the fifth star.

This true Parisian palace, combines in an original form a bold Edouard François architecture with the refined interior design of Jacques Garcia. Comfort and maximum aesthetic elegance are joined with the respect for the environment and personalized quality service.

The royal treatment begins with the warm reception of doorman Clifford, and continues with the attention of the private butler who will be available 24 hours a day, guaranteeing a perfect stay until the time of your departure.

The rooms are exceptional and truly spacious, and the suites extravagant and unforgettable. You have all the luxury at your disposal, the most recent digital technology and the possibility of adjusting the ambiance music and lighting to your personal taste.

Experiment the delights of the famous Le Fouquet's restaurant with its bar L'Escadrille or the sophisticated Le Diane, pass by the Lucien lounge bar or the intimate La Galerie Joy tea room. Surrender yourself to the cares of the U SPA to restore your body's balance and well-being, and awaken your senses in the best Hôtel Fouquet's Barrière style.

FRANCE - PARIS

ADDRESS:
Avenue Georges V, 46
75008 Paris
France

GPS: 48° 52' 16.04" N | 02° 18' 03.63" E

Website: <http://hotelfouquetsbarriere.arteh-hotels.com>

FACILITIES

Rooms: 67 | Suites: 40

Bar | Event Space(s) | Garden | Gym / Fitness Area | Health Club
| Internet Access | Jacuzzi | Laundry | Massages | Pets Allowed |
Private Car Park | Restaurant | Sauna | SPA | Steam /
Turkish Bath | Swimming Pool (Indoor)



PERSHING HALL

MORNINGS OF TRANQUILLITY, AFTERNOONS OF CHARM AND NIGHTS OF GLAMOUR.

The Pershing Hall hotel is centred in the golden triangle between the Champs-Élysées and the Montaigne and George V Avenues, a financial district of the city, close to the best boutiques and fashionable clubs that gave it the reputation of one of the most beautiful avenues in Paris.

The building was built by the Count of Paris at the end of the 18th century and is a very beautiful example of Imperial architecture. In 1917 it served as headquarters for General John Pershing and a year later became the American Legion officer club.

Later on it was converted into a hotel and over the years it was renewed by talented contemporary architects. In 2001, André Putman redesigned the spaces with his known elegance, in 2005, Imaad Rahmouni added the Mediterranean spirit combining light, colour and materials to create vibrant, delicate and welcoming environments. The rooms are full of charm and luxurious details.

In the restaurant, the Chef presents a creative seasonal menu of French cuisine balanced with flavours of around the world and accompanied with a superb selection of the best wines. You may appreciate these surprises in an open patio that has a vertical garden created by the famous botanist Patrick Blanc, with over 300 species of plants from the Philippines, Himalayas and Amazon.

To relax, at the end of the day recover your energies in the tranquil SPA, before a lively night beginning in the chic Bar & Lounge of the hotel, with original cocktails and the sound of the best DJ's, one of the trendiest spots in Paris



FRANCE - PARIS

ADDRESS:
Rue Pierre Charron, 49
75008 Paris
France

GPS: 48° 52' 08.56" N | 02° 18' 08.57" E

Website: <http://pershinghall.arteh-hotels.com>

FACILITIES

Rooms: 16 | Suites: 14

Bar | Event Space(s) | Garden | Gym / Fitness Area | Internet Access | Laundry | Massages | Pets Allowed | Restaurant | SPA



HÔTEL DUO

AN INTIMATE, CHARMING AND CHIC JEWEL.



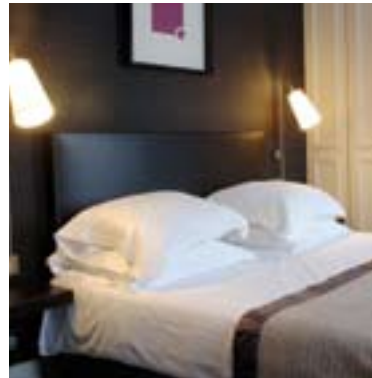
Passed from mother to daughter along four generations since 1918, the Hôtel Duo reaches us, renewed and sophisticated, in the heart of the Marais quarter in the centre of Paris.

To the existing family hotel a second building was added, both with a typically Parisian facade, which the architect and decorator Jean Philippe Nuel combined to perfection, uniting historical character to contemporary design.

The result was the creation of chic, intimate and personal spaces. We find a blend of acid and warm colours in the fabrics and wallpapers, over sized lamps and sober furniture, in equilibrium with old wood beams and raw concrete.

The rooms and suites also offer this spirit and atmosphere of comfortable elegance, as do the small library and lounge bar, a favorable place to mingle and experience the barman's surprising creations.

At your disposal is a fitness room, ideal for morning exercise, and a sauna to relax at the end of a day, certainly spent discovering the charms of the City of Light.



FRANCE - PARIS

ADDRESS:
Rue du Temple, 11
75004 Paris
France

GPS: 48° 51' 28.99" N | 02° 21' 11.05" E

Website: <http://hotelduo.arteh-hotels.com>

FACILITIES

Rooms: 56 | Suites: 2

Bar | Gym / Fitness Area | Internet Access | Laundry |
Restaurant | Sauna

HÔTEL SEZZ PARIS

DESIGN, COMFORT, SPACE AND UNIQUE SERVICE.

The Hôtel Sezz Paris hides from the city's tourist bustle in a small street of the exclusive Passy neighbourhood, where the Bir-Hakeim bridge touches the right bank of the Seine River, in a building dating from the early 20th century.

This is an unconventional and innovative hotel, with an elegant contemporary decoration that contrasts with its façade, with a luxury that goes beyond the unmistakable quality of the materials, offering you ample spaces and a surprising personalized service.

Upon entering the lobby, with two parlours in brown and red tones with the khaki gray coloured stone typical of the Portuguese town of Cascais, we notice there is no check-in and we are received by our professional and personal assistant who will accompany us and guarantee a perfect stay.

The modern rooms are spacious and with the bed unexpectedly located in the centre. At the back of the hotel is the Grande Dame bar, made in partnership with the Veuve Cliquot champagne producer. In the lower floor is the area destined to well-being, with the inviting hamman, jacuzzi and the indispensable massage room.

The details of design that enrich the environment are endless. The faucets are from Dornbracht, the chairs were designed by Driade, the sofas and beds are from Artelano, and the flower vases and lighting fixtures are created by the legendary Italian glass manufacturers, Murano.



FRANCE - PARIS

ADDRESS:
Avenue Frémiet, 6
75016 Paris
France

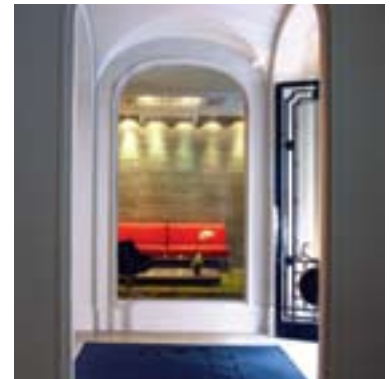
GPS: 48° 51' 23.50"N | 02° 17' 06.75"E

Website: <http://hotelsezzparis.arteh-hotels.com>

FACILITIES

Rooms: 13 | Suites: 12 | Lofts: 1

Bar | Event Space(s) | Internet Access | Jacuzzi | Massages | Pets Allowed | Private Car Park



HÔTEL AVENUE LODGE

MOUNTAIN CHARM AND TRADITION MEET MODERN STYLE.



The setting is the famous town of Val d'Isère nestled in the imposing French Alps. The stage is the Hôtel Avenue Lodge, a chalet of Savoyard style where the best of the mountain tradition meets the modern.

It is on the lively main avenue we find the building built according to the region's traditions, with a strong contemporary decoration and mixture of raw mountain materials, where comfort and sophistication are always present.

After the day's adventures, the hotel invites you to a relaxing moment at the bar with fireplace to savour local pastries, or to a relaxing visit to the SPA. Here, the swimming pool, sauna, hamman, jacuzzi and massages will work miracles on your body.

The restaurant menu offers traditional French quality cuisine and the best regional dishes. At the end of the evening, return to the serenity and tempting atmosphere of your room with a view of the town.

Barely 150 meters away, the ski lifts open the gates to the Espace Killy. A domain of 300 km of trails from the Le Fornet mountain up to the Grande Motte in the neighbouring resort of Tignes, that you can explore with your own equipment or with that rented from the hotel's professional shop.



FRANCE - VAL D'ISÈRE

ADDRESS:
Avenue Olympique, BP 80
73152 Val d'Isère
France

GPS: 45° 26' 58.55" N | 06° 58' 42.43" E

Website: <http://hotellavenuelodge.arteh-hotels.com>

FACILITIES

Rooms: 48 | Suites: 6

Bar | Fireplace | Garage | Gym / Fitness Area | Internet Access |
Jacuzzi | Laundry | Massages | Pets Allowed (upon request) |
Restaurant | Sauna | SPA | Swimming Pool (Indoor)

HÔTEL SEZZ SAINT-TROPEZ

TOUCH THE NEW DESIGN AND FEEL THE PERSONALIZED HOSPITALITY IN THE FRENCH RIVIERA.

Situated in a dense wooded area minutes from the beach, the Hôtel Sezz Saint-Tropez is a new experience of hospitality in the French Riviera, offered to us by the expert hotelier Shahé Kaladjian.

Created by the designer Christophe Pillet and by the Parisian architect Jacques Ory, the hotel draws inspiration from the Mediterranean light, from the calm breezes, from the deep blue sea, from the lush green plantations and the fields of fragrant lavender, the most authentic regional riches.

The interiors present a pattern of colours from the 50's, with a mixture of white, saffron and brown tones, with greys and light blues. The objects and furniture were designed by Christophe Pillet for several American and Italian manufacturers. The lighting fittings are by Mazzega and Oluce, the bathroom fixtures are by Boffi and Fantini, and the chairs are by Emeco.

The rooms and suites are grouped into low buildings, like a small village in Provence, around a big central area with a swimming pool, ideal for lying under the sun, going for a refreshing dive or enjoying creative cocktails.

In the main building is the Dom Pérignon Champagne Bar, the astonishing restaurant Colette by the famous chef Pierre Gagnaire, and the relaxing Sezz SPA by Payot to complete a superb stay.



FRANCE - SAINT-TROPEZ

ADDRESS:
Route des Salins
83990 Saint-Tropez
France

GPS: 43° 15' 49.88" N | 06° 40' 10.34" E

Website: <http://hotelsezssainttropez.arteh-hotels.com>

FACILITIES

Rooms: 26 | Suites: 1 | Bungalows: 5 | Villas: 2

Bar | Garden | Internet Access | Jacuzzi | Laundry | Massages |
Pets Allowed | Private Car Park | Restaurant | Solarium | SPA |
Steam / Turkish Bath | Swimming Pool



THE MUST HOTELS



BY ARTEH®

INDIA



WWW.ARTEH-HOTELS.COM

RAMBAGH PALACE

BECOME A MAHARAJA IN THE PINK CITY.



Through the 47 acres of lush green and ornamental gardens, one can glimpse Jaipur's Rambagh Palace in India, a palace hotel that offers its guests a taste of royal living. A luxury and extravagance that was once a sole preserve of kings.

Originally built for the queen's favourite handmaiden, this palace was converted in 1835 into the royal family's hunting lodge. From 1925 to 1957 it became the official residence of the region's maharaja, later becoming a hotel.

The interior of the palace was refurbished in keeping with its historical heritage, providing a glimpse into the lifestyle of the royals. The richness of the design in the public spaces and in the rooms, the magnificent beds, the high ceilings and the paintings on the walls stand out and reflect an architecture that seamlessly blends the best of Moghul and Rajput influences.

The hotel has at the guests' disposal several restaurants with dishes on offer that range from international flavours to the most exotic and select from the royal kitchens of India. At the SPA traditional Indian treatments are offered as well as wraps or massages with aromatherapy, amongst the many perks you may wish to enjoy.

For sports enthusiasts, the hotel has a fitness centre, tennis and squash courts, a jogging circuit and a neighbouring golf course. For culture enthusiasts, the region is rich in history and invites visits to forts, temples and palaces, without neglecting the labyrinths of bazaars and the picturesque streets of Jaipur, the Pink City.

INDIA - JAIPUR

ADDRESS:

Bhawani Singh Road
302005 Jaipur
India

GPS: 26° 53' 45.84" N | 75° 48' 21.39" E

Website: <http://rambaghpalace.arteh-hotels.com>

FACILITIES

Rooms: 69 | Suites: 20

Bar | Croquet Field | Event Space(s) | Garden | Gym / Fitness Area | Internet Access | Jacuzzi | Laundry | Massages | Private Car Park | Putting Green | Restaurant | Shop | SPA | Squash Court | Swimming Pool (Indoor, Outdoor) | Tennis Court



UMAID BHAWAN PALACE

A MAJESTIC PALACE WHERE THE WEST AND THE EAST MERGE.

The imposing Umaid Bhawan Palace and its vast gardens emerge like an oasis atop Jodhpur. Partially converted into a luxury hotel, it is one of the last great palaces of India and one of the largest residences in the world.

Its construction, a measure undertaken by the Maharaja Umaid Singh to provide work for the population in a time of drought and famine, began in the 1930's and was completed 15 years later. Since then it has been the official residence of the Jodhpur Royal family.

The architecture, conceived by Henry Lanchester, fuses western and eastern influences, with special mention due to the central dome with a Renaissance spirit or the Rajput influenced towers. The interiors honour the tradition of luxury associated to Indian palaces and the decor follows the Art Deco style of the time. The rooms and royal suites also offer a fusion of cultures with all the comforts imaginable.

For dinner the hotel's restaurants are tempting suggestions, both serve international flavours, well accompanied by local specialities. At the Risala the atmosphere is elegant and refined, while at The Pillars the charm, the views to the gardens and the Meherangarh Fort all stand out.

To enrich your stay, take delight in the exclusive and relaxing treatments of the Taj SPA. The massages and therapies, intensified with the aromas of Indian oils and experienced in this royal setting, will feel rejuvenating and make your whole experience at the Umaid Bhawan Palace even more unforgettable.



INDIA - JODHPUR

ADDRESS:
Circuit House Road
342006 Jodhpur
India

GPS: 26° 16' 53.08" N | 73° 02' 56.08" E

Website: <http://umaidbhawanpalace.arteh-hotels.com>

FACILITIES

Rooms: 24 | Suites: 40

Bar | Event Space(s) | Garden | Gym / Fitness Area | Internet
Access | Jacuzzi | Laundry | Massages | Private Car Park |
Restaurant | Sauna | Shop | SPA | Squash Court | Steam / Turkish
Bath | Swimming Pool (Indoor) | Tennis Court



TAJ LAKE PALACE

RELAX, MEDITATE AND FLOAT IN THIS DREAM PALACE.



In Udaipur, India, inserted into an idyllic setting with the Aravali mountains as backdrop and enveloped by the tranquil waters of Lake Pichola, the Taj Lake Palace emerges, a majestic palace of mosaics and white marble and a sumptuous dream hotel.

Built on a small island in the mid 18th century the palace still retains to this day the inheritance and traditions of the rulers of the region. It is difficult not to marvel at the corridors, patios, lakes, gardens and fountains that welcome us with the memories, luxuries and extravagances of an era gone-by.

Most of the rooms share the benefits of these surroundings with the interior lake or the mountains in the background, the palaces on the neighbouring island or the city in view. The comfort and period design, with rich fabrics, intricate wood carvings or colourful murals all create an unforgettable royal atmosphere.

Give the exquisite Indian food selected from the region of Rajasthan a chance, or if you prefer less exotic flavours there is also a restaurant offering international cuisine. Select a special place in the hotel to dine and the Royal Butlers will do all to serve you princely wherever you wish.

Your stay will be incomplete without surrendering to the care of the Royal SPA, offering several treatments based on centuries-old techniques of health and well-being, and without attempting yoga and meditation. When the time to leave arrives, you will continue to look back in order to once again admire this precious Indian jewel.

INDIA - UDAIPUR

ADDRESS:
Pichola Lake, PO Box 5
313001 Udaipur
India

GPS: 24° 34' 31.41" N | 73° 40' 49.34" E

Website: <http://tajlakepalace.arteh-hotels.com>

FACILITIES

Rooms: 66 | Suites: 17

Bar | Event Space(s) | Fireplace | Games Room | Garden | Gym
/ Fitness Area | Internet Access | Jacuzzi | Laundry | Massages
| Private Car Park | Restaurant | Sauna | Shop | SPA | Steam /
Turkish Bath | Swimming Pool



TAJ FALAKNUMA PALACE

THE EXPERIENCE OF LIVING AN HISTORICAL WORK OF ART.

On the top of Hyderabad in India, nestled amidst verdant and unique themed gardens, with the inspiring views of Charminar and further down of the domes and minarets of the old city, rises the marvelous Taj Falaknuma Palace.

This 60 room palace, in the shape of a scorpion, was a royal home of the legendary Nizam who governed the city. Today, after ten years of sensitive restoration works, it's a luxury hotel of dramatic beauty and a true work of art.

Built entirely of Italian marble, the building presents a rare combination of Tudor and Italian architecture. Its interior houses valuable pieces art, ornate inlaid furniture from Kashmir, rich handcrafted French tapestries and frescos with Indian and English influences that confer it a distinct Baroque style.

The former royal family and state rooms are now the suites for guests. In the restaurants you can discover the best specialties of Hyderabadi cuisine or refined Italian flavours. To complete your stay, try the royal treatments and exclusive signature therapies in the luxurious Jiva SPA.

The city of Hyderabad has over 400 years of history, unique architecture, rich gastronomy, one of the biggest movie industries of the world and a vibrant life. Come discover it and visit the Taj Falaknuma Palace.



INDIA - HYDERABAD

ADDRESS:

Engine Bowli - Falaknuma
500053 Hyderabad
India

GPS: 17° 19' 53.20" N | 78° 27' 58.17" E

Website: <http://tajfalaknumapalace.arteh-hotels.com>

FACILITIES

Rooms: 46 | Suites: 14

Children's Pool | Croquet Field | Event Space(s) | Games Room |
Garage | Garden | Gym / Fitness Area | Internet Access | Jacuzzi |
Laundry | Library | Massages | Private Car Park | Restaurant |
Sauna | Shop | SPA | Swimming Pool



THE MUST HOTELS



BY ARTEH®

ITALY



WWW.ARTEH-HOTELS.COM

HOTEL REGENCY

YOUR OASIS IN THE CAPITAL CITY OF THE RENAISSANCE.



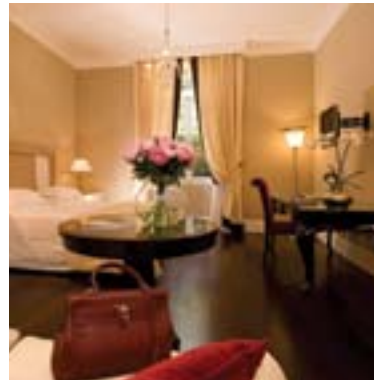
During the brief period when Florence was the capital city of Italy the Hotel Regency received ministers and high government officials. Today, this elegant five star hotel offering attentive and personalised service is your retreat in the heart of Florence.

Located in a tranquil area of the city, a short distance from its centre and overlooking the pretty Piazza D'Azeglio, this attractive 19th century building maintains the character and charm of the past intact.

Inside, the atmosphere is refined, with the antique furniture, the elaborate fabrics or the numerous artworks that adorn the spaces all deserving special mention. The rooms are exquisitely comfortable and offer all that is needed to satisfy the demands of the present.

To savour both traditional Italian and regional Tuscan cuisine the hotel restaurant, Relais Le Jardin, is recommended as the place to delight in the aromas and flavours of the lunches and dinners conceived by the chef. To relax or to have a drink at the end of the day, the cosy and private hotel garden is recommended.

The surrounding monumental Florence, with its rich heritage of museums and monuments invites on to embark on cultural strolls in search of its artistic treasures and of the contrasts between the past and the present. Set out to discover the Hotel Regency too.



ITALY - FLORENCE

ADDRESS:

Piazza Massimo D'Azeglio, 3
50121 Firenze
Italy

GPS: 43° 46' 30.96" N | 11° 16' 05.15" E

Website: <http://hotelregency.arteh-hotels.com>

FACILITIES

Rooms: 27 | Suites: 8

Bar | Garden | Internet Access | Laundry | Massages | Restaurant

HOTEL LORD BYRON

RELISH IN VINTAGE HOSPITALITY AT THE ETERNAL CITY.

Next to the beautiful gardens of Villa Borghese and hidden away in the exclusive Parioli neighbourhood in Rome, the Hotel Lord Byron stands a luxurious and private refuge located just a couple of paces from the city's main attractions.

This hotel resulted from the refurbishment of a private mansion and received the name of the famous 19th century poet, Lord Byron, who found inspiration for some of his literary works in Italy.

The design is a portrait of 1930s Art Deco which confers a unique and elegant tone alongside the comfort of a private home. The rooms adopt the same style and, naturally, they also offer all the modern comforts.

Sapori, the Lord Byron's gourmet restaurant, counts on the talent of its chef and on a selection of the finest ingredients to present magnificent regional specialities. From the starters to the desserts, including the award-winning wines in the cellar, everything is delicious.

During your stay at the Eternal City of Rome be sure not to miss the liveliness of Piazza di Spagna or the Trevi Fountain, the grandness of St. Peter's Basilica, the Colosseum or the hospitality at the Hotel Lord Byron.



ITALY - ROME

ADDRESS:

Via Giuseppe de Notaris, 5
00197 Roma
Italy

GPS: 41° 55' 10.09" N | 12° 28' 54.27" E

Website: <http://hotellordbyron.arteh-hotels.com>

FACILITIES

Rooms: 20 | Suites: 12

Bar | Internet Access | Laundry | Massages | Restaurant



LE SIRENUSE

WAKE UP TO A SEA BREEZE AND THE SINGING OF THE SIRENS.



Nestled on a cliff overlooking the sea in the beautiful town of Positano, the pearl of the Amalfi Coast in southern Italy, the elegant hotel Le Sirenuse welcomes you with the comfort of a private home and the service of a luxury hotel.

The Le Sirenuse opened to the public in 1951, when the Sersale family decided to transform their Summer home into a small boutique hotel. The following 50 years brought extensions and renovations without ever neglecting the well-being and traditional attention given to its guests.

The superb view onto the town and the mountains or onto the sea and the islands of the Sirens immediately stand out, either from the terrace by the pool, the restaurant or the rooms. Inside, the furniture and the antique paintings collected by the family, as well as the plants and flowers enveloping us are all worthy of mention.

Conceived by the famous architect, Gae Aulenti, the hotel's SPA and fitness centre, designed in a modern style which contrasts with the building's 18th century Baroque style, offer the perfect scenario and treatments for rejuvenating mind and body.

In the morning stroll through the streets of Positano, along the mountain trails or enjoy the hotel's private boat. During the afternoon take advantage of the tours to Amalfi, Ravello or Pompei. On Summer evenings relax at the Champagne Bar to the sound of music, sitting underneath an immense starry sky.

ITALY - POSITANO

ADDRESS:

Via Cristoforo Colombo, 30
84017 Positano
Italy

GPS: 40° 37' 48.33" N | 14° 29' 10.82" E

Website: <http://lesirenuse.arteh-hotels.com>

FACILITIES

Rooms: 52 | Suites: 11

Bar | Fireplace | Gym / Fitness Area | Internet Access | Jacuzzi |
Laundry | Library | Massages | Private Car Park | Restaurant |
Sauna | Shop | SPA | Steam/ Turkish Bath | Swimming Pool |
TV Lounge



CAPRI PALACE

MEDITERRANEAN CHARM AND ITALIAN ELEGANCE.

In the charming and attractive town of Anacapri, on the most exclusive part of the island of Capri in Italy, is the luxurious Capri Palace, located on the foot of Mount Solaro on a place with superb views over the Mediterranean Sea.

Dating from the mid 20th century, the hotel was recently refurbished. This process involved considerable alterations whilst still maintaining its classical Mediterranean style and conveying a noble and distinguished design which can be witnessed on the palace's stone floor, its archways and the enveloping columns.

Inside one finds a welcoming atmosphere and utmost elegance, with the interior design based on white and gold, with fabrics in warm tones and where the contemporary art works from the hotel's collection stand out.

From the rooms and the suites there are views of the sea, the Bay of Naples or the Island of Ischia. Some of the suites have works by masters of abstract painting to be appreciated and in others private gardens with swimming pools can be enjoyed. All the suites personify pure charm.

During the day either a stroll through the narrow and luminous streets of Anacapri or circling the island on one of the hotel's magnificent boats is highly recommended. Energies can be replenished by savouring delicious Mediterranean flavours at L'Olivo or by indulging in the care of the prestigious SPA's professionals.



ITALY - CAPRI - ANACAPRI

ADDRESS:

Via Capodimonte, 2 B
80071 Anacapri
Capri
Italy

GPS: 40° 33' 21.26" N | 14° 13' 19.10" E

Website: <http://capripalace.arteh-hotels.com>

FACILITIES

Rooms: 60 | Suites: 19

Bar | Event Space(s) | Fireplace | Garden | Gym / Fitness Area |
Internet Access | Laundry | Massages | Restaurant | Shop |
Solarium | SPA | Steam / Turkish Bath | Swimming Pool



THE MUST HOTELS



BY ARTEH®

MOROCCO



WWW.ARTEH-HOTELS.COM

TERRE RESORT & SPA

THE MOROCCAN CULTURAL HOSPITALITY AND THE PERSONALIZED CONTEMPORARY SERVICE.



Discover a complete luxury resort with an unique architecture, situated in a five hectare property adjacent to Marrakech's palmeria. Feel the charming hospitality and the personalized discrete service of the Terre Resort & SPA.

The resort is composed by innovative octagonal buildings in riad style, surrounded by palm trees, by the colour and fragrance of rose bushes, by the exoticism of other indigenous plants that decorate the paths of this tranquil and charming small city.

In the suites the environment is cozy and comfortable, in the common spaces the old and new merge, the authentic and contemporary are mixed and luxury touches are offered with a traditional Moroccan style.

The restaurant team offers the best flavours and Moroccan spices which you may appreciate anywhere in the resort. At the SPA, the innovative treatments and therapies are ideal to cultivate your well-being and enjoy a relaxing holiday.

The resort's peace will surround you, but if you feel the need to embark on an adventure, cross the mystic Medina streets, explore the desert and climb the Atlas highest mountain. The experience at Terre will enrich your memories and, after having arrived as a guest, you will return home as a true friend.

MOROCCO - MARRAKECH

ADDRESS:

Ouaha Sidi Brahim - Ouest Palmeria
40000 Marrakech
Morocco

GPS: 31° 42' 16.29" N | 08° 01' 05.10" W

Website: <http://terreresortspa.arteh-hotels.com>

FACILITIES

Suites: 52 | Villas: 4

Bar | Event Space(s) | Fireplace | Garden | Gym / Fitness Area |
Internet Access | Jacuzzi | Laundry | Library | Massages |
Minigolf Course | Pets Allowed | Restaurant | Sauna | Shop |
Solarium | SPA | Steam / Turkish Bath | Swimming Pool |
Tennis Court



SUBLIME AILLEURS

A RETREAT INTO SUBLIME SENSATIONS.

Hidden away in a vast palm grove on the outskirts of bustling and mysterious Marrakech one finds the Sublime Ailleurs, a true oasis of style, serenity and hospitality.

This hotel consists of three luxurious residences of Moorish architecture where the emphasis has been given to space, light, comfort and the privacy of the guests. Each one has its own swimming pool, garden and unique style, two of which are Art Deco and the other is inspired by the Orient.

One enters these sophisticated spaces, where modernity is subtly combined with the tradition present in the talent of the local craftsmen who have built all the surroundings. The engraved ceilings, the marble and the wrought iron, the pieces in bronze and silver, the velvets and the silks, all bear witness to their art.

Daily, the two chefs prepare their gourmet meals with several ingredients grown on the estate of the hotel and creatively combine Moroccan flavours with Mediterranean ones. In the late afternoon the butlers will serve a refreshing tea in the tranquillity of the garden or on the terrace with a view from the palm grove all the way to the Atlas mountains.

The personalised service offered by a discreet, attentive and smiling team is exceptional and contributes greatly enriching this sublime experience.



MOROCCO - MARRAKECH

ADDRESS:

Lotissement Akkari - Route de Fès, BP 2309 - Palmeraie
40000 Marrakech
Morocco

GPS: 31° 39' 48.60" N | 07° 51' 57.78" W

Website: <http://sublimeailleurs.arteh-hotels.com>

FACILITIES

Rooms: 4 | Villas: 2

Driving Range | Event Space(s) | Fireplace | Garden | Internet
Access | Laundry | Library | Massages | Private Car Park | Putting
Green | SPA | Swimming Pool



DAR ZEMORA

A GARDEN OF ELEGANCE, STYLE AND ATTENTIVE SERVICE.



In your next trip to Marrakech come to Dar Zemora, an elegant boutique hotel with special personality and charm, situated in the calm area of the Palmeraie, but close to the vibrant Medina.

The architecture is villa style, with big windows that illuminate all areas and allow you to enjoy the views of the extensive surrounding garden. The cypress trees limit the area, the palms and bamboos give it an exotic touch, while the fruit trees and rose beds offer colour and a perfect perfumed aroma.

In the interior you will discover a personalized and refined decoration, with a luxurious and elegant character, welcoming suites and rooms, comfortable spaces ideal for catching up with your reading, planning your exciting day in Marrakech or tasting a cocktail before dinner.

The talented cooks prepare, in alternate days, an international gourmet menu and another of Moroccan flavours that you will be able to savour in the candle lit dining room, or in the outdoor terrace, the privacy of your suite or beside the swimming pool.

The hotel has the traditional hamman and a massage room that are ideal to relax after an balloon flight, a tennis game, a golf round, a horseback ride or an adventure in the Medina.



MOROCCO - MARRAKECH

ADDRESS:
Rue El Aandalib - Palmeraie
40016 Marrakech
Morocco

GPS: 31° 39' 26,52" N | 07° 57' 56,67" W

Website: <http://darzemora.arteh-hotels.com>

FACILITIES

Rooms: 3 | Suites: 3

Croquet Field | Fireplace | Garden | Internet Access | Laundry |
Library | Massages | Private Car Park | Restaurant | Sauna |
Shop | Swimming Pool

DAR SEVEN

ENJOY YOUR CHARMING HOLIDAYS AT THE CHIC MARRAKECH.

We pass the walls that surround the Medina, the old city of Marrakech, and we follow the labyrinth of narrow busy streets bound for Dar Seven, a superb charming and chic retreat.

This small hotel is Ruspoli's family holiday home, who renewed with special care and refinement the spaces of an old typical building, that now opens its doors to also receive and welcome travellers.

In contrast with the agitated city that surrounds us, we enter a serene interior patio and savour a refreshing mint tea. We traverse the dining room, the lounge and reading room, and the inviting roof top terrace and we appreciate the details of an elegant and detailed decoration.

The white, black and several shades of cream and brown are the predominant colours that soften the environment and accompany us throughout the four personalized and distinctive rooms, with high ceilings and attractive furniture.

For dinner or a light lunch, we count on the mastery of the chef to prepare us, with the freshest ingredients, various Moroccan flavoured dishes that we can enjoy in any of the corners of the seductive Dar Seven.



MOROCCO - MARRAKECH

ADDRESS:

Sidi Benslimane - Derb Ibn Moussa - Kaa Sour, 7 - Médina
40000 Marrakech
Morocco

GPS: 31° 38' 20,09" N | 07° 59' 37,33" W

Website: <http://darseven.arteh-hotels.com>

FACILITIES

Rooms: 3 | Suites: 1

Bar | Internet Access | Laundry | Massages | Pets Allowed



DAR ONE

ELEGANCE AND STYLE AT THE HEART OF THE MEDINA.



The hotel's team will receive and guide you through the winding and narrow streets of Marrakech in direction of Mellah, the city's old Jewish neighbourhood, where your peace and tranquillity refuge at the Medina is hidden. Welcome to the intimate riad Dar One.

While preserving the traditional structure and architecture, as well as the charm of the riads, the renovation of the spaces of this boutique hotel was carried out with originality, elegance and passion to guarantee a special stay.

The ancient was approached with a new spirit, design and modern comfort elements were introduced, leather, alcantara and velvet textures were mixed, and the lighting was cared for to create cosy environments.

Around the refreshing patio are the rooms and suites. They are calm and serene, with comfortable and attractive shades of aubergine, chocolate and beige. In the roof terrace you may appreciate the sun or the starry sky, relaxing on the long stools while savouring a delicious tea.

We suggest an experience of Moroccan food flavours, prepared by the riad's cook or at the Medina's best restaurants, as well as a visit to the neighbouring Bahia Palace and to the colourful shops that fill the streets. The team of Dar One will help you enjoy your stay to the fullest.

MOROCCO - MARRAKECH

ADDRESS:
Derb Jemma El Kebir, 19 - Hay Essalam - Médina
40000 Marrakech
Morocco

GPS: 31° 37' 14,45" N | 07° 59' 01,25" W

Website:
<http://darone.arteh-hotels.com>

FACILITIES

Rooms: 6

Bar | Fireplace | Internet Access | Laundry | Massages | Pets
Allowed | Solarium | TV Lounge



VILLA MARGOT

EXPLORE THE TRADITIONAL AND MODERN FACES OF MOROCCO WITH A LUXURIOUS SERVICE.

The Villa Margot is located next to the road to Ourika, near the centre of Marrakech and only ten minutes from the famous Jemaa El Fna square. Here you'll find a harmonious fusion of luxury, tranquillity and considerate personalized service.

This villa with the typical charm of the Moroccan architecture, presents itself in a tempting rose tone and is surrounded by a garden that involves us with endless floral fragrances. The impressive Atlas mountain range and its snow-topped mountains that can be seen in the distance are the backdrop for this charming setting.

The eight suites are spacious and have a terrace facing the garden and a refreshing swimming pool. In its interior we find a comfortable, contemporary style, with refined details and up-to-date technology.

In the restaurant you'll be able to opt for an international cuisine or uncover the exotic flavours of the local gastronomy. In the parlor you have at your disposal several beauty treatments and massages, as well as a hamman for a perfect integration with the local culture.

Besides the mandatory visit to Marrakech, you may also go on excursions using four wheel drive vehicles, horseback or camel, venture out on balloon flights or visit the region's golf courses. The owners of the Villa Margot will do everything to guarantee a formidable stay and it's with pleasure that they receive us and serve as guides in this cultural adventure.



MOROCCO - MARRAKECH

ADDRESS:

Route de l'Ourika, Km 10 - Tassoultant
40000 Marrakech
Morocco

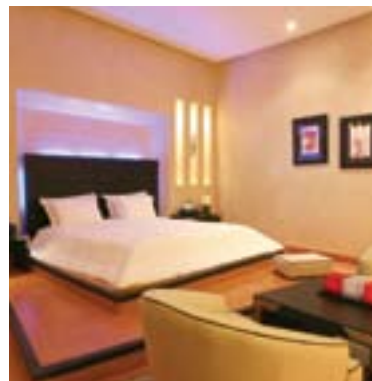
GPS: 31° 31' 52.72" N | 07° 57' 35.28" W

Website: <http://villamargot.arteh-hotels.com>

FACILITIES

Suites: 8

Bar | Children's Pool | Fireplace | Garden | Internet Access |
Laundry | Massages | Pets Allowed | Private Car Park |
Restaurant | Steam / Turkish Bath | Swimming Pool



KASBAH BAB OURIKA

AN ENCHANTING VALLEY AND AN UNFORGETTABLE STAY.



Only 35 minutes from Marrakech's airport, the Kasbah Bab Ourika rises majestically at the top of the Ourika Valley, guarding the entrance of the Atlas mountain range and dazzling guests with panoramic views of the mountains and the river that runs through the valley.

Built with ecological considerations and using old Berber techniques, this small hotel in earth tones and traditional thick walls seems to have grown out of the rocks, integrating itself perfectly in the dramatic landscape that surrounds it.

During your stay you can relax next to the concealed swimming pool, in the rooms with a chic and rustic atmosphere with comfortable fireplaces, in the broad rooms with terraces or while experiencing a massage in the gardens.

The chef is a specialist in Berber traditional recipes, but also in international cuisine, and uses the freshest ingredients supplied daily by the small surrounding villages. You'll be able to delight yourself with his dishes in the restaurant, in the gardens or even in the privacy of your room.

For those who wish to see more of Morocco we suggest a visit to the Berber big market in the town of Tnine Ourika and to the farms that supply herbs and flowers to the herbariums and perfumers, without missing the discovery of the Medina souks of Marrakech. The more energetic traveller will also want to experience an endless number of adventure sports, advised by the hotel's friendly and professional team.

MOROCCO - OURIKA VALLEY

ADDRESS:
Tnine Ourika
Vallée Ourika
Morocco

GPS: 31° 21' 32.22" N | 07° 45' 47.65" W

Website: <http://kasbahbabourika.arteh-hotels.com>

FACILITIES

Rooms: 9 | Suites: 6

Bar | Fireplace | Games Room | Garden | Internet Access |
Laundry | Library | Massages | Private Car Park | Restaurant |
Sauna | Swimming Pool | TV Lounge



THE MUST HOTELS



BY ARTEH®

PORTUGAL



WWW.ARTEH-HOTELS.COM

CONVENTO DOS CAPUCHOS

MAKE HISTORY AND DISCOVER THE MYSTERIES OF A SECULAR CONVENT.



Overlooking the Minho River, in Monção, the secular Convento dos Capuchos brings history back to the present and now opens its doors as a charming hotel after profound refurbishing and revalorization works.

Throughout its history it has had various uses and owners, undergone various adaptations and reconstructions that explain its peculiar architectural aspects and unusual paintings and inscriptions. In its interior we find typical convent spaces such as the chapter house, the chapel, the cellar, the magnificent cloister or the tower room.

The cells, an apt name for the rooms, are distributed amongst several wings and present an original and differentiated decoration. They are spacious and equipped at the level of the current demands of comfort.

Surrounding the cloister is the restaurant of regional and author cuisine, as well as the welcoming bar, with rest and game areas which are ideal for socializing. In the crypt area we find the event room prepared for conferences, exhibitions or banquets, as well as the gym and SPA conceived with the guests' well-being in mind.

In the hotel's gardens, and in order to enjoy nature, you may play a game of tennis, try out the mini-golf, swim in the pool or simply walk in the panoramic esplanade or relax in the terrace.

PORTUGAL - MONÇÃO

ADDRESS:

Quinta do Convento de Santo António dos Capuchos
4950-527 Monção
Portugal

GPS: 42° 04' 37.91" N | 08° 28' 40.02" W

Website: <http://conventodoscapuchos.arteh-hotels.com>

FACILITIES

Rooms: 24

Bar | Event Space(s) | Garden | Gym / Fitness Area | Internet
Access | Jacuzzi | Laundry | Massages | Minigolf Course |
Private Car Park | Restaurant | Sauna | SPA | Swimming Pool |
Tennis Court



POUSADA MONTE DE SANTA LUZIA

THE IDEAL SCENERY FOR THE PERFECT REST.

Located in the North of Portugal and carved into a hill that overlooks the city of Viana do Castelo, the Pousada Monte de Santa Luzia results from the perfect refurbishment of a hotel built in the beginning of the past century by a rich local inhabitant as a gift to his city.

Its location is perfect. Surrounded by green gardens and woods this historical hotel also offers an ample and magnificent view onto the city and its former port, over the delta of Lima River and a large expanse of golden sand beaches bathed by an ocean of intense blue.

The windows and balconies of the rooms at the front of the building allow this to be appreciated to its fullest extent and one can become lost in the view they offer. One can also benefit from this unique scenery at the restaurant and the panoramic terraces, whilst one indulges in the rich dishes to be chosen from a menu of regional and international cuisine.

In this discrete and tranquil place one can organize special corporate events or spend a relaxing vacation where one can improve one's tennis game, attempt water sports or venture onto the Santa Luzia mountain to visit its church, climb to its summit and discover all its secrets.



PORTUGAL - VIANA DO CASTELO

ADDRESS:
Monte de Santa Luzia
4901-909 Viana do Castelo
Portugal

GPS: 41° 42' 13.04" N | 08° 50' 07.83" W

Website: <http://pousadamontedesantaluzia.arteh-hotels.com>

FACILITIES

Rooms: 50 | Suites: 1

Bar | Children's Pool | Event Space(s) | Gym / Fitness Area |
Internet Access | Laundry | Private Car Park | Restaurant |
Swimming Pool | Tennis Court | TV Lounge



CASA MELO ALVIM

A CHARMED STAY AND A JOURNEY INTO THE PAST.



Enveloped in history and the seductive landscapes of sea, river and mountain that are characteristic of Viana do Castelo, the Casa Melo Alvim is the most ancient manor house in the city and is today a charming and welcoming hotel.

Dating from 1509, this house has welcomed several additions along the centuries that have enriched its architectural heritage. Three years of restoration have allowed this wealth to be preserved so it may now be enjoyed by the guests as they journey through the Manuelino, Chão, Barroque, Rococo and Romantic styles of Portuguese architecture.

The choice of furnishings also allows contact with different styles like D. Maria, D. José or D. João V, especially in the rooms and suites. These are all different and with accentuated period decor.

The chef suggests dishes where he combines the best regional products with creative manners of presentation, and as a complement to the meals a visit to the bar for a nightcap accompanied by piano music is suggested. The small garden and cloisters invite you to rest or read in surroundings of complete tranquillity.

To complete your stay, the Casa Melo Alvim has prepared a series of suggestions for jaunts into town and the neighbouring region and can also provide bicycles and even a basket for delicious picnics by the sea or in the mountain.



PORTUGAL - VIANA DO CASTELO

ADDRESS:
Avenida Conde da Carreira, 28
4900-343 Viana do Castelo
Portugal

GPS: 41° 41' 39.70" N | 08° 49' 52.09" W

Website: <http://casamelovalvim.arteh-hotels.com>

FACILITIES

Rooms: 16 | Suites: 4

Bar | Event Space(s) | Fireplace | Games Room | Garden |
Internet Access | Laundry | Library | Private Car Park |
Restaurant | TV Lounge

POUSADA SÃO VICENTE

DISCOVER THE HISTORY OF BRAGA AND RELAX ON A TERRACE OVERLOOKING THE POOL.

The Pousada São Vicente, a palace from the late 19th century recently converted into a charming and comfortably small hotel, is located in Braga, a short distance from the city's historical centre.

The architecture and the lovely gardens surrounding the edifice create a romantic and relaxing ambiance that is complemented by the welcoming and tasteful decor. Should you opt for the new wing of the hotel the rooms are modern in style while the rooms in the ancient wing preserve period and rustic furnishings to be discovered.

During your stay you may appreciate the paintings and sculptures that constitute a constant presence along the halls and sitting rooms, and you may also relax at the bar that spreads out onto a terrace overlooking the pool.

Benefit from the centrality of the Pousada São Vicente to see the city of Braga and to visit its monuments, sanctuaries and the Falperra mountain during the day. During the evening, savour the regional gastronomy at one of the various restaurants in Braga and enjoy yourself at the city's bars and discos.



PORTUGAL - BRAGA

ADDRESS:
Largo de Infias
4700-357 Braga
Portugal

GPS: 41° 33' 27.99" N | 08° 25' 04.43" W

Website: <http://pousadasaovicente.arteh-hotels.com>

FACILITIES

Rooms: 26 | Suites: 2

Bar | Event Space(s) | Garden | Internet Access | Laundry |
Pets Allowed | Private Car Park | Restaurant | Swimming Pool |
TV Lounge



POUSADA SANTA MARINHA

FEEL AT HOME LIKE A KING IN THE PLACE WHERE PORTUGAL WAS BORN.



On the hill overlooking the historical city of Guimarães the majestic Pousada Santa Marinha rises up, fruit of the refurbishment of the ancient Agostinhos Convent from the 12th century.

This convent, initially a school of higher studies for the monks of the Order of Saint Agostinho, was left seriously derelict in the 20th century following a fire. The recuperation works conducted years later were able to transform the formerly cold spaces of yesteryear into warm and comfortable environments of today. The achievements of this project were recognised with the 1985 National Architecture Award.

Luxurious pieces of furniture from the convent's estate were used and out of the monks cells rooms were created. Other spaces to highlight are the rooms for events, a restaurant with varied and refined cuisine and a cosy bar with the perfect fireplace to warm the coldest nights.

At this hotel, niches with granite fountains, priceless tile panels, secular cloisters, balconies and terraces directed at the landscape await being found. On the outside there is also a swimming pool, small gardens and the beautiful surrounding Penha park.

A cultural visit to Guimarães, the birthplace of Portugal, along with activities such as golf, various strolls, horseback riding or cycling are recommended to enrich the day.



PORTUGAL - GUIMARÃES

ADDRESS:
Largo Domingos Leite de Castro
4810-011 Guimarães
Portugal

GPS: 41° 26' 36.02" N | 08° 16' 36.84" W

Website: <http://pousadasantamarinha.arteh-hotels.com>

FACILITIES

Rooms: 49 | Suites: 2

Bar | Children's Pool | Event Space(s) | Fireplace | Games Room | Garden | Internet Access | Laundry | Private Car Park | Restaurant | Swimming Pool

CS VINTAGE HOUSE HOTEL

HISTORY AND SERENITY PRESERVED IN A VINE STEP LANDSCAPE.

The dazzling natural setting of the Douro River banks and the verdant slopes of the vineyards, where the internationally recognized Port wine comes from, are the home of the romantic CS Vintage House Hotel.

An old warehouse from the 18th century, with a superb location over the river, was meticulously renewed and transformed to give place to a charming boutique hotel with traditional architecture and a refined quality service.

When you arrive at the hotel you may easily lose yourself in the rich history of the place, present in each nook and impregnated in each decorative detail, prudently preserved so that you may rediscover the past in a classical environment of good taste.

The surrounding environment invades us with its serenity and offers unforgettable views of the river which flows through the valley, and which we may appreciate from the beautiful gardens, the refreshing swimming pool or from the room windows.

The dedicated hotel team advises dinner in the restaurant, accompanied by the best regional wines, a mandatory boat ride on the Douro River and a thematic training course to discover the fascinating world of wine.



PORTUGAL - PINHÃO

ADDRESS:
Lugar da Ponte
5085-034 Pinhão
Portugal

GPS: 41° 11' 24.81"N | 07° 32' 36.86"W

Website: <http://csvintagehousehotel.arteh-hotels.com>

FACILITIES

Rooms: 36 | Suites: 7

Bar | Event Space(s) | Fireplace | Games Room | Internet Access |
Laundry | Library | Private Car Park | Restaurant | Shop |
Swimming Pool | Tennis Court



BESSA HOTEL

CONTEMPORARY DESIGN AND URBAN CHARM.



The Bessa Hotel is located in Boavista, one of the more prestigious zones of Oporto, in the city's business and commercial district. It presents a new concept, an attractive modern architecture and a interior design full of urban charm.

All the hotel areas are comfortable and conceived to fulfill all your needs. The rooms are spacious and well equipped, and the suites boast a private terrace with a city view.

It has generous seating areas to rest and relax, a reading area, a small gym with Turkish bath to keep in shape during the stay, and several multi-purpose rooms for hosting meetings, presentations or conferences.

In the bar, painted in warm colours, try a sublime cocktail or one of the delicious "tapas" that whet your appetite for the Iberian fusion cuisine, prepared by the chef in the intimate and sophisticated restaurant. The hotel terrace is the ideal place for an after dinner.

Near the hotel we recommend the House of Music, the Fundação Serralves or the City park, some of the mandatory stops in the Oporto, as well as the Bessa Hotel, perfect for a business trip or a vacation.



PORTUGAL - OPORTO

ADDRESS:
Rua Dr. Marques de Carvalho, 111
4100-325 Porto
Portugal

GPS: 41° 09' 44.78" N | 08° 38' 41.55" W

Website: <http://bessahotel.arteh-hotels.com>

FACILITIES

Rooms: 100 | Suites: 9

Bar | Event Space(s) | Gym / Fitness Area | Internet Access |
Laundry | Library | Private Car Park | Restaurant

HOTEL INFANTE SAGRES

THE ANCIENT AND THE CONTEMPORARY IN A LUXURIOUS AND CHARMING COMBINATION.

It's in Oporto's historical centre that we find the Hotel Infante Sagres, near the area classified as World Heritage, the arts neighbourhood and fashionable bars. It's installed in a 50's building, with Neo-Baroque inspired interiors and contemporary style details.

This is a unique hotel with sophisticated design and a luxurious atmosphere that throughout the years has conquered famous guests. The Norwegian Kings, the Queen of Holland, the Dalai Lama, Catherine Deneuve and John Malkovich have already approved the charm of its personalized service and intimacy of a private home.

The rooms and suites sport a combination of original antiquities, with a modern art collection and exclusive furniture, which all result in an classical European environment and a stay full of comfort.

The restaurant's menu will convince you to stay for dinner, to uncover the city's gastronomical traditions reinvented by the chef, well accompanied by Douro's finest wines. The meals are served in an exuberant parlor or in a welcoming exterior patio, if you prefer to have dinner "al fresco".

You will also have at your disposal the treatments and massages of a small SPA, inspired by a temple situated in the ruins of Angkor in Cambodia, and which presents the ideal excuse to evade the city, regenerate your energies and obtain even more moments of pleasure in your stay at the Hotel Infante Sagres.



PORTUGAL - OPORTO

ADDRESS:
Praça Dona Filipa de Lencastre, 62
4050-259 Porto
Portugal

GPS: 41° 08' 52.87" N | 08° 36' 46.81" W

Website: <http://hotelinfantesagres.arteh-hotels.com>

FACILITIES

Rooms: 62 | Suites: 8

Bar | Event Space(s) | Fireplace | Internet Access | Laundry |
Massages | Restaurant | SPA



HOTEL TEATRO

BE A DIRECTOR, ACTOR OR SPECTATOR IN A THEATRE OF ELEGANCE.



The Hotel Teatro is born in the historical centre of Oporto, in the same place where in 1859 the Baquet Theatre was inaugurated. Come and discover this homage to the world of the art of representation, in this magnificent and renewed city stage.

The decoration recreates the refined, unique and bohemian environment of the theatre, with exclusive and precious pieces of furniture with details that make the difference. The suits and dresses displayed, the lights or the draperies remind us of scenes we watched on stage.

The reception represents a box office, where the guests go to buy a ticket that gives access to the rooms. Comfortable and in tones of brown, bronze and gold, the rooms are inspired in the scenic language and present innovative structures.

In the Palco restaurant and in the Plateia bar, distinctively fashionable, urban and elegant, contemporary and exotic sensations are transmitted, with the flavours transformed into authentic degustation items of refined taste.

The hotel also has a versatile interior open-air patio, an ideal space to relax, socialize or read a book, and a small gymnasium with an inspiring down town view.



PORTUGAL - OPORTO

ADDRESS:
Rua Sá da Bandeira, 84
4000-427 Porto
Portugal

GPS: 41° 08' 48.36" N | 08° 36' 33.18" W

Website: <http://hotelteatro.arteh-hotels.com>

FACILITIES

Rooms: 67 | Suites: 6

Bar | Garage | Gym / Fitness Area | Internet Access | Laundry |
Restaurant

POUSADA PALÁCIO DO FREIXO

APPRECIATE THE ARCHITECTURE, ADMIRE THE VIEW AND WITNESS THE ATTENTIVE SERVICE.

On the Northern margin of the Douro River, in the city of Oporto rises the Freixo Palace, an important national monument from the 18th century built by Nasoni, famous Italian architect at the time, and a magnificent example of the Portuguese civil Baroque architecture.

Since it was commissioned by the Dean of Oporto's Cathedral, this palace was a private residence, then a mill factory around the 20th century and more recently it was purchased by the State for the creation of a professional training centre. Now, with a renovated interior and preserved historic façade, it receives us as a surprising charming hotel.

Today the palace receives the restaurant and bar, the living rooms and the ideal spaces for meetings and varied corporate or private events.

The old mill factory building lodges the rooms and suites, that benefit from a superb view over the river, and also the SPA equipped with a gymnasium, Turkish bath, sauna and massage rooms.

If you are going to visit the city of Oporto, take advantage to discover the riverside, stroll through the city park, appreciate the exhibitions of the Serralves Foundation and the concerts of the House of Music, and book a different stay in the refined environment of the Pousada Palácio do Freixo.



PORTUGAL - OPORTO

ADDRESS:
Estrada Nacional 108
4300-316 Porto
Portugal

GPS: 41° 08' 33.27" N | 08° 34' 27.70" W

Website: <http://pousadapalaciodefreiro.arteh-hotels.com>

FACILITIES

Rooms: 77 | Suites: 10

Bar | Children's Pool | Event Space(s) | Garden | Gym / Fitness Area | Internet Access | Laundry | Massages | Private Car Park | Restaurant | Sauna | SPA | Steam / Turkish Bath | Swimming Pool (Indoor, Outdoor)



PESTANA PORTO

SAIL ON THE DOURO RIVER FROM THE WINDOW OF YOUR ROOM.



In Praça da Ribeira, in the historical centre of the city of Oporto, one finds the Pestana Porto hotel, perfectly integrated into the scenery of the riverside area which offers an amazing view onto the Douro River and a unique experience.

Partially set into the ancient Medieval wall of the city, it occupies a picturesque set of buildings recovered from the 16th, 17th and 18th centuries which still retain their original façade and were recently recognised as a World Heritage site.

The hotel's rooms are customised and present special characteristics according to the building in which they are found, as well as a contemporary decor designed for comfort and with attention to details.

At the restaurant, with its warm and relaxing atmosphere, allow yourself to be tempted by the innovative dishes or by the traditional flavours of the region or of Portugal. Also enjoy a drink at the bar to exchange ideas or to groove to the sound of jazz or bossa nova.

The location of the Pestana Porto is perfect for venturing into the streets and alleys of the historical centre, to appreciate its architecture and monuments and visit the museums and famous Port Wine cellars on the South bank of the river.



PORTUGAL - OPORTO

ADDRESS:
Praça da Ribeira, 1
4050-513 Porto
Portugal

GPS: 41° 08' 26.30" N | 08° 36' 47.95" W

Website: <http://pestanaporto.arteh-hotels.com>

FACILITIES

Rooms: 45 | Suites: 3

Bar | Event Space(s) | Internet Access | Laundry | Restaurant

AQUAPURA DOURO VALLEY

A VALLEY OF INSPIRATION, SERENITY AND THE HARMONY OF THE SENSES.

The Aquapura Douro Valley hotel is located on the South bank of the Douro River, in one of the most protected regions of Portugal abounding in magnificent valleys, terraced cliffs and deep valleys through which the river meanders.

The designers and architects have taken an estate with a period house, a vineyard and scrubland, and created a unique luxury hotel, including individual villas, restaurants and bars, swimming pools, a SPA and a business centre, that exists in perfect harmony with the surrounding environment.

The sensual and Zen atmospheres were achieved from the fusion of contemporary European design concepts with Asian materials, the combination of simple and modern furniture with organic natural pieces, and the attractive play of earthy ochre colours with the varied tones of the landscape and the intense tones of the grapes.

Feel the serenity of the different spaces, allow yourself to be pampered by the customized service, savour the culinary specialities, relax and awaken to the benefits of the Aquapura SPA treatments in the candlelight and fresh valley breeze.

To discover the region that served as inspiration for the hotel, we suggest cruises along the river, taking the train that slowly travels between towns and villages that have been lost in time, and tasting several different Port and Douro wines.



PORTUGAL - LAMEGO - SAMODÃES

ADDRESS:

Quinta de Vale Abraão - Samodães
5100-758 Lamego
Portugal

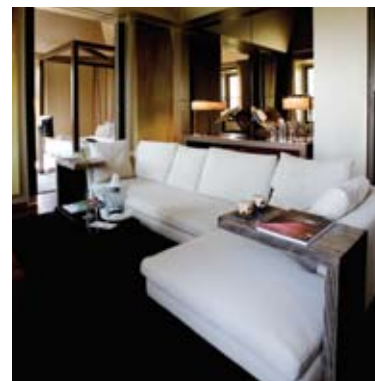
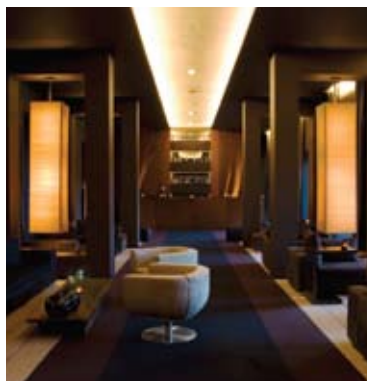
GPS: 41° 08' 36.78" N | 07° 48' 41.53" W

Website: <http://aquapuradourovalley.arteh-hotels.com>

FACILITIES

Rooms: 41 | Suites: 10 | Villas: 21

Bar | Event Space(s) | Garden | Gym / Fitness Area | Internet
Access | Laundry | Library | Massages | Private Car Park |
Restaurant | Sauna | SPA | Steam / Turkish Bath |
Swimming Pool (Indoor, Outdoor) | Tennis Court



DOURO PALACE HOTEL RESORT & SPA

THE HARMONY OF THE HISTORICAL AND THE CONTEMPORARY IN A REFUGE ON THE DOURO.



Nestled into a green cliff overlooking the Douro River in Baião province, the small palace covered in blue tiles and the contrasting white minimalist building that make up the Douro Palace Hotel Resort & SPA stand out.

This combination of the historical with the contemporary has brought to life a hotel with elegant spaces, boasting modern design and refined details, and also benefiting from the superb location and the refreshing natural surroundings.

The highlight is the panoramic view over the valley and the river that can be appreciated from the swimming pool, the terrace and the interiors, especially the rooms, all of which have large windows and balconies.

The SPA is also worthy of special mention. Taking its inspiration from the landscape, its philosophy is centered on introducing the produce of the Douro region through genuine sensorial experiences like the aromatic bath of either citrus fruits or wines, the Port wine wrap or the exfoliation with flowers and wild berries.

Also available at the hotel are a restaurant and several bars, as well as multi-purpose spaces for corporate or private events such as meetings, conferences or weddings. The hotel offers all the conditions for an unforgettable break or a successful business trip.

PORTUGAL - BAIÃO - - SANTA CRUZ DO DOURO

ADDRESS:

Lugar do Carrapateiro - Santa Cruz do Douro
4640-423 Baião
Portugal

GPS: 41° 06' 34.12" N | 08° 00' 29.04" W

Website: <http://douropalacehotelresortspa.arteh-hotels.com>

FACILITIES

Rooms: 59 | Suites: 1

Bar | Children's Pool | Event Space(s) | Fireplace | Garden |
Internet Access | Jacuzzi | Laundry | Massages | Private Car Park |
Restaurant | Sauna | SPA | Swimming Pool (Indoor, Outdoor)



CASAS DO CÔRO

TRAVEL THROUGH TIME AND TAKE REFUGE IN A HISTORICAL PORTUGUESE VILLAGE.

The Casas do Côro are located in the heart of the Medieval Marialva, a historical Portuguese village, in a region where the signs of man reach as far back as the Palaeolithic era.

The refurbishment of these century old houses and the harmonious combination of the structures' granite with the refined decor are an astonishing surprise. The feel is rustic, yet doesn't compromise the comfort demanded by the times and afforded by the surrounding space.

From the panoramic terraces the region's landscape may be appreciated, replete with hills, deep valleys and meandering rivers, a constant invitation to the practice of sports or the enjoyment of unforgettable walks.

Relish in the traditional sweets early in the morning and avoid missing a fulfilling lunch characteristic of the local gastronomy, well accompanied by wine from the cellar and vineyard of Casas do Côro.

Beyond Marialva there are four more historical villages not to be missed, several castles, archaeological circuits and the Côa's famous Palaeolithic rock engravings.



PORTUGAL - MÊDA - MARIALVA

ADDRESS:
Largo do Côro - Marialva
6430-081 Mêda
Portugal

GPS: 40° 54' 52.06" N | 07° 13' 55.23" W

Website: <http://casasdocoro.arteh-hotels.com>

FACILITIES

Rooms: 5 | Suites: 1 | Houses: 7

Bar | Event Space(s) | Garden | Internet Access | Jacuzzi | Private Car Park | Restaurant (upon request) | Sauna | Shop | Swimming Pool



POUSADA DE VISEU

COMFORT AND CHARM IN A RECONVERSION OF HISTORICAL HERITAGE.



The Pousada de Viseu results from the recovery and reconversion of the 18th century building of São Teotónio Hospital into a charming hotel, and presents a successful combination of its historical architecture and the contemporary spirit of its decoration.

Its history begins in 1793, when the first stone was set, and its public opening was registered in 1842 after a long construction period. It was deactivated at the end of the 20th century and finally renovated, from 2007 to 2009, for the beginning of a new era.

The façade is majestic and the entrance is overseen by the statues of Faith, Hope and Charity, who observe the view towards the old city. Enter to discover a professional team, ample spaces and comfortable rooms, which will make your leisure or business stay unforgettable.

At the imposing cloister bar you may appreciate an appetizer, before a meal of regional flavours served in one of the two restaurants. In the gymnasium or interior pool you may exercise your body, before a relaxing sauna, Turkish bath or a massage at the SPA. In the event spaces you may organize seminars, gala dinners or meetings.

A few minutes away, the Rossio square and the historical centre of Viseu invite you for a cultural stroll, as well as the Sé or the Grão Vasco Museum. You may also try horseback riding at the equestrian centre or test your technique at one of the golf courses.

PORTUGAL - VISEU

ADDRESS:
Rua do Hospital
3500-161 Viseu
Portugal

GPS: 40° 39' 09.51" N | 07° 54' 46.91" W

Website: <http://pousadadeviseu.arteh-hotels.com>

FACILITIES

Rooms: 64 | Suites: 20

Bar | Event Space(s) | Gym / Fitness Area | Internet Access |
Jacuzzi | Laundry | Massages | Private Car Park | Restaurant |
Sauna | SPA | Steam / Turkish Bath | Swimming Pool (Indoor,
Outdoor)



PALÁCIO DOS MELOS

MEET WITH THE PAST AND EXPERIENCE THE BEST OF THE PRESENT.

The centuries old Palácio dos Melos is situated in the centre of Viseu, lodged in the Porta Soar de Cima, one of the seven gates of the city's wall from the time of King Afonso. This building of great architectural and cultural relevance is currently a historical and charming hotel.

During the refurbishment into a hotel, the palace was carefully restored and its original architecture respected. During the same process a new wing was added, enabling the hotel to expand and creating an appealing contrast between past and present.

The superior rooms were installed in the main building, designed in a classical and palatial style. In the new wing, the rooms are designed in a simple and contemporary style, but are equally comfortable.

The restaurant, attractive and refined, highlights nouvelle cuisine and offers an international menu with carefully selected ingredients as well as selective wine list. The bar is ideal for enjoying the surrounding landscape while drinking a cocktail or a tea.

A cultural tour of Viseu, a city where the ancient and the modern exist in harmony, is one possible way of occupying the day. Horseback riding and perfecting techniques at the equestrian centre or playing the 27 challenging holes of the Golfe Montebelo inserted into the Caramulo and Estrela mountains are other possible suggestions.



PORTUGAL - VISEU

ADDRESS:
Rua Chão do Mestre, 4
3500-103 Viseu
Portugal

GPS: 40° 39' 31.78" N | 07° 54' 45.69" W

Website: <http://palaciosdosmelos.arteh-hotels.com>

FACILITIES

Rooms: 27

Bar | Event Space(s) | Internet Access | Private Car Park |
Restaurant



POUSADA CONVENTO DE BELMONTE

AFTER EXPLORING THE MAGNIFICENT LANDSCAPE, ENJOY AN EVENING IN GREAT COMPANY.



Nestled in a small mountain, with the village of Belmonte, the birthplace of Pedro Álvares Cabral, only a kilometre away, lies the Pousada Convento de Belmonte.

This historical pousada emerged from the refurbishment of a small 13th century chapel and the ruins of the ancient Nossa Senhora da Esperança Convent, classified in 1986 as a public interest edifice.

This convent's lengthy history has been preserved and utilised to achieve the perfect combination of the historical elements, the architecture, the cosy decor of the sitting rooms and the comfort of the pousada's rooms.

Enjoy a dip in the pool, appreciate the valley view from the exceptional terrace and savour the regional gastronomic specialities of the restaurant. Perhaps, acquire a sculpture from the permanent exhibition of artworks by local artists.

Be sure to try the hiking paths, horseback riding or to experiment the excitement of a four wheel drive. Other enticing possibilities include fishing and Winter sports, as well as delving into the beauty of Serra da Estrela natural park.



PORTUGAL - BELMONTE

ADDRESS:

Serra da Esperança, Apartado 76
6250-073 Belmonte
Portugal

GPS: 40° 20' 39.99" N | 07° 21' 38.48" W

Website: <http://pousadaconventodebelmonte.arteh-hotels.com>

FACILITIES

Rooms: 23 | Suites: 1

Bar | Event Space(s) | Games Room | Garden | Internet Access |
Laundry | Private Car Park | Restaurant | Swimming Pool |
TV Lounge

POUSADA CONVENTO DO DESAGRAVO

WITNESS THE HISTORICAL PAST AND THE ROMANTIC PRESENT.

In the tiny Vila Pouca da Beira, beautifully framed into the mountainous landscape of Northern Portugal amongst villages replete with history, the Pousada Convento do Desagravo is nestled in a building that dates from the 18th century.

Legend has it that this convent was built under the orders of Bishop Count Francisco de Lemos de Faria Pereira in the year 1780 and was converted into a military hospital nearly 100 years later.

Today, after meticulous recovery and restoration work the charm of those times was conserved and it was adapted to contemporary needs.

The bedrooms and living rooms in this hotel are decorated in a modern, attractive and comfortable style. From the restaurant, specialising in regional dishes, there is access to an ample terrace with a relaxing view onto the pine trees in the garden, where a swimming pool and tennis court can be found.

Close by, the picturesque villages of Piodão and Linhares can be explored, canoeing or fishing can be attempted in the Alva River, hunting or rock climbing and even Winter sports are available in the neighbouring Serra da Estrela.



PORTUGAL - VILA POUCA DA BEIRA

ADDRESS:

Calçada do Convento
3400-748 Vila Pouca da Beira
Portugal

GPS: 40° 18' 27.58" N | 07° 55' 02.56" W

Website: <http://pousadaconventododesagravo.arteh-hotels.com>

FACILITIES

Rooms: 21 | Suites: 3

Bar | Chapel | Children's Pool | Event Space(s) | Games Room |
Garden | Internet Access | Laundry | Private Car Park |
Restaurant | Swimming Pool



PALÁCIO DA LOUSÃ

IN A REFURBISHED PALACE, RECALL MEMORIES OF PAST TIMES WITH THE COMFORT OF TODAY.



Located in the village of Lousã, in the centre of Portugal and harboured in a 18th century building qualified as historical heritage, the former Palace of the Salazares is today a classic and sophisticated hotel, the Palácio da Lousã.

Built by Bernardo Salazar, the palace remained the property of his family until 1893 when it was purchased by João Antunes dos Santos, native to Lousã. Some of his descendents are today the hotel's proprietors.

Its history includes episodes from the French Invasions, a period during which it lodged French troops as well as Portuguese and English ones. To preserve the memories of the past, as well as the palace's character, the process of creating the hotel was carefully thought out to ensure a customized experience with modern comforts in historical surroundings.

The architectural details from that epoch are still present, as well as the doors and wainscoting, the ceilings and stucco, the staircase at the entrance and the frescoes in the living room. The decor of the lounges and rooms of the palace is distinctively classical, emphasising refinement and tradition. The design in the new wing, adjacent to the garden, is contemporary and relaxed in a minimalist spirit.

Once outside the hotel set out to discover the Lousã mountain, which can be seen in the distance, as you practice adventure sports, hike or enjoy swimming in the river. The region is also rich in museums and monuments which suggest enticing cultural excursions to Coimbra and the famous Roman ruins of Conimbriga.



PORTUGAL - LOUSÃ

ADDRESS:
Largo Viscondessa do Espinhal
3200-257 Lousã
Portugal

GPS: 40° 06' 33.41" N | 08° 14' 47.12" W

Website: <http://palaciodalousa.arteh-hotels.com>

FACILITIES

Rooms: 43 | Suites: 3

Bar | Event Space(s) | Fireplace | Games Room | Garden |
Internet Access | Laundry | Private Car Park | Restaurant |
Swimming Pool | TV Lounge

HOTEL LUSITANO

TRANQUILLITY AND HARMONY, IN SEARCH OF THE SOUL OF THE RIBATEJO.

In Golegã, at the heart of the Ribatejo region in the centre of Portugal, the Hotel Lusitano stands out due to its charm, elegance and the experience of complete tranquillity and harmony it offers.

In this attractively designed hotel the historical and cultural value of the old house, an ancient building representative of traditional Portuguese architecture, have been combined with the more modern style of a new wing. Its name celebrates the Lusitano horse, the oldest saddle horse in the world, known for nearly 5.000 years.

The atmosphere is warm and inviting, conceived for your well-being, and juxtaposes traditional elements with modern design. Enjoy the comfort and design of the rooms and on the restaurant Capriola savour the rich cuisine of the region, from a menu initially created by the chef José Avillez.

There is also a SPA at the hotel, conceived for physical and emotional renovation, where you may care for your body, relax with anti-stress or special massages and try an invigorating Vichy shower.

Become acquainted with the equestrian and bull-fighting art of the region, its centuries old traditions, its monumental heritage and its environmental diversity. Hotel Lusitano beckons.



PORTUGAL - GOLEGÃ

ADDRESS:
Rua Gil Vicente, 4
2150-193 Golegã
Portugal

GPS: 39° 24' 09.64" N | 08° 29' 17.31" W

Website: <http://hotellusitano.arteh-hotels.com>

FACILITIES

Rooms: 23 | Suites: 1

Bar | Event Space(s) | Fireplace | Garage | Garden | Gym / Fitness Area | Internet Access | Jacuzzi | Laundry | Massages | Private Car Park | Restaurant | Sauna | SPA | Steam / Turkish Bath | Swimming Pool (Indoor) | TV Lounge



AREIAS DO SEIXO

ORIGINALITY, COMFORT AND SOPHISTICATION IN PERFECT FUSION WITH NATURE.



Feel a magical place located less than an hour from Lisbon and near Santa Cruz beach. Listen to the secrets of nature and look at the pine forest, dunes and sea. Discover the originality of the Areias do Seixo charm hotel.

This project was born and grew in harmony with the environment, resorting to renewable energies and using natural resources. Stone, wood and glass predominated in the construction of the buildings with a tempting and innovative architecture.

In the relaxing and romantic spaces, one notes the ethnic inspirations from Moroccan and Indian environments, as well as the perfect contrasts between sophisticated and rustic elements. Each room is decorated differently to provide a distinct sensory experience and, in each return, a different story to live.

In the restaurant a journey of aromas, flavours and colours await you, taking advantage of what the land gives naturally. In the comfortable theater room you may appreciate the best films. In the SPA, open the mysterious door to unique sensations in search of inner harmony and well-being.

Flee from the confusion of urban surroundings and take advantage of your stay to visit the countless beaches, explore the neighbouring Berlengas or the medieval town of Óbidos. Or just dedicate yourself to relaxing and returning to our origins with the experiences created by the Areias do Seixo hotel.

PORTUGAL - SANTA CRUZ

ADDRESS:

Praceta do Atlântico - Póvoa de Penafirme
2560-043 A-dos-Cunhados
Portugal

GPS: 39° 09' 11.90" N | 09° 21' 47.98" W

Website: <http://areiasdoseixo.arteh-hotels.com>

FACILITIES

Rooms: 10 | Villas: 3 | Houses: 2

Bar | Event Space(s) | Fireplace | Internet Access | Jacuzzi |
Laundry | Massages | Private Car Park | Restaurant | Sauna |
SPA | Steam / Turkish Bath | Swimming Pool | TV Lounge



TIVOLI PALÁCIO DE SETEAIS

LET YOURSELF BE EMBRACED BY A ROMANTIC AND ROYAL SCENARIO.

Going up the mountain range and after passing the historical town of Sintra, classified as a World Heritage site, we arrive at a Neoclassical building which today is the magnificent hotel Tivoli Palácio de Seteais.

The palace was built in the last decades of the 18th century by order of Daniel Gildemeester, who was at the time the Consul of Holland in Portugal. In 1800 the estate was acquired by D. Diogo of Noronha, the V Marquis of Marialva, who built a new wing and later ordered the triumphant arch that united the two buildings, conferring it the image that remains today.

Presently, this refined hotel is endowed with dazzling parlors with magnificent frescoes of intense chromatism, attributed to the famous painter Jean Pillement, antique furniture of unusual richness and a romantic historical ambiance.

The rooms are of great comfort and classical as are the remaining common spaces. From the windows it's possible to appreciate the view that extends towards the ocean and begins with the lush gardens of box steps that embrace the hotel.

The cultural and natural wealth of this region is immense. There are tracks through the mountain range and narrow streets in the town to discover, gastronomic delights to savour, castles, convents and palaces to uncover in this enchanting scenario.



PORTUGAL - SINTRA

ADDRESS:
Rua Barbosa du Bocage, 10
2710-517 Sintra
Portugal

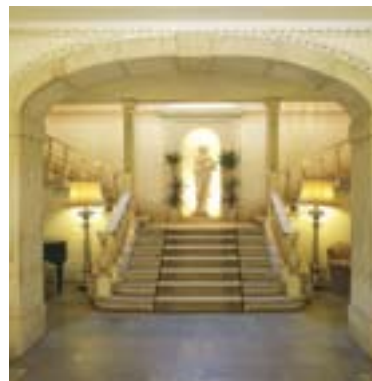
GPS: 38° 47' 45.95" N | 09° 23' 56.54" W

Website: <http://tivolipalacioseteais.arteh-hotels.com>

FACILITIES

Rooms: 29 | Suites: 1

Bar | Event Space(s) | Garden | Internet Access | Laundry |
Library | Restaurant | Swimming Pool | Tennis Court



HOTEL ALBATROZ

DIVE INTO A SALT WATER POOL AND RELAX TO THE SOUND OF WAVES LAPPING ON THE ROCKS.



"Tiny Almond Box" the pet name of the ancient palace of the Dukes of Loulé, is today, the prestigious Hotel Albatroz, a luxury hotel situated by the sea in the village of Cascais.

This 19th century palace, designed by Ávila, the renowned architect, was constructed by the Duke of Loulé in 1873 and served as the private residence of several families until 1963, when it was converted into a guest house.

In 1983, following extensive remodelling and amplification works, it was transformed into a modern and luxurious hotel in keeping with the charisma and refinement of its history, and the beauty of its architectural style.

The sumptuous and elegant decor in soft colours effuses the charm of a private residence and reveals itself to be both comfortable and warm. The rooms and ample suites benefit from the calming view of the sea, also present at the restaurant and perfectly in harmony with the unique menu of fish and seafood.

During the day, the proximity of the beaches and the marina offer the opportunity to practice countless water sports. In the evening, be sure to explore the vibrant village of Cascais as a complement to an unforgettable stay.



PORTUGAL - CASCAIS

ADDRESS:
Rua Frederico Arouca, 100
2750-353 Cascais
Portugal

GPS: 38° 41' 59.68" N | 09° 25' 03.34" W

Website: <http://hotelalbatroz.arteh-hotels.com>

FACILITIES

Rooms: 49 | Suites: 11

Bar | Event Space(s) | Garage | Internet Access | Laundry |
Massages | Private Car Park | Restaurant | Swimming Pool |
TV Lounge

VILLA ALBATROZ

OPEN THE WINDOW, FEEL THE SEA BREEZE AND APPRECIATE THE LIFE OF CASCAIS BAY.

Encrusted in the centre of Cascais, directly over its attractive bay is the relaxing Villa Albatroz. The perfect and sophisticated setting is the guarantee of a memorable stay.

The building once belonged to the Dukes of Palmela, was the private residence of the writer Maria Amália Vaz de Carvalho and the poet Gonçalves Crespo, and a convenient locale for many other writers and poets of the time. The cultural heritage, combined with the aesthetic beauty of the house was the motivation behind the recognition the building's status as an edifice of historical, cultural and architectural interest.

Luxury and taste are omnipresent throughout the Villa Albatroz. The rooms display distinct and personalised natures inspired in the Dona Maria style that creates a pleasant period atmosphere, both comfortable and charming.

Excellent views are a constant that can be appreciated from the rooms, the restaurant or the terrace. The quality service reveals the care invested into receiving the guests.

The privileged location invites the guest to become acquainted with the village of Cascais, to explore all the entertainment and distractions it offers, but to also practice water sports, hike along the coast or indulge in exciting boat trips.



PORTUGAL - CASCAIS

ADDRESS:
Rua Fernandes Tomás, 1
2750-342 Cascais
Portugal

GPS: 38° 41' 51.10" N | 09° 25' 08.45" W

Website: <http://villaalbatroz.arteh-hotels.com>

FACILITIES

Rooms: 11

Bar | Event Space(s) | Internet Access | Laundry |
Private Car Park | Restaurant | TV Lounge



SENHORA DA GUIA

SIP A DRINK AT THE PANORAMIC BAR, ENJOY THE SILENCE AND THE GLORIOUS OCEAN VIEW.



Located between Cascais and Guincho beach, between the sea and the golf courses, the hotel Senhora da Guia offers the perfect combination of sophisticated ambiance and quality service.

The rooms and sitting areas, distributed throughout three buildings, are surprising due to their attractive design, the taste of the decor, and the refinement and comfort of the furniture. A number of the rooms provide direct access to the ample gardens and to the salt water pools, while the others offer snug terraces and a superb ocean view.

It is ideally located for those who wish to explore the varied beaches nearby, to sunbathe or even to practice numerous water sports, whether one prefers the calmer waters of Cascais bay or the wild sea of Guincho beach.

Alternatively, the hotel offers excellent conditions at several world renowned golf courses. Particularly worthy of mention are Quinta da Marinha, Quinta da Beloura and the courses at Oitavos Golfe or Penha Longa.

At the start of the evening, after a day well spent, relax on the terrace by the pool before savouring a delectable fish dish at Senhora da Guia's restaurant.



PORTUGAL - CASCAIS

ADDRESS:
Estrada do Guincho
2750-642 Cascais
Portugal

GPS: 38° 41' 44.04" N | 09° 27' 23.37" W

Website: <http://senhoradagua.arteh-hotels.com>

FACILITIES

Rooms: 40 | Suites: 1

Bar | Event Space(s) | Garden | Gym / Fitness Area | Health Club | Internet Access | Jacuzzi | Laundry | Private Car Park | Restaurant | Sauna | Steam / Turkish Bath | Swimming Pool

GRANDE REAL VILLA ITÁLIA

STYLE AND ROYAL LIFE ROCKED BY THE OCEAN.

In the cosmopolitan town of Cascais, situated just a few kilometres from Lisbon, the Grande Real Villa Itália can be found. A sumptuous hotel where one can breathe in the ocean and the luxury of a surprising classical modern style.

This hotel is the fruit of the remodelling of Villa D'Este and the extension of Villa Itália. These were the Portuguese residences of King Humberto II of Italy during his forced exile following the establishment of the Republic in his country. The result is a set of attractive classically designed buildings inserted into an area with peaceful gardens, terraces with an ocean view and salt water pools.

The interior contains grand spaces with opulent and sophisticated decor that convey the idea of being in a contemporary palace. In the ample rooms, delightful details like a gourmet minibar or a relaxing view of the sea from the balconies stand out.

The Belvedere offers refined cuisine of Portuguese and Mediterranean influences deserving to be savoured on the sunny terrace. At the end of the afternoon or in the evening, the live music is an invitation from the La Terraza bar.

Your stay at the Villa Itália would be incomplete without experiencing the Thalassotherapy circuit or the Vichy douche at the Real SPA Marine, a sanctuary of Roman inspiration and a refuge for your body and mind.



PORTUGAL - CASCAIS

ADDRESS:

Rua Frei Nicolau de Oliveira, 100
2750-319 Cascais
Portugal

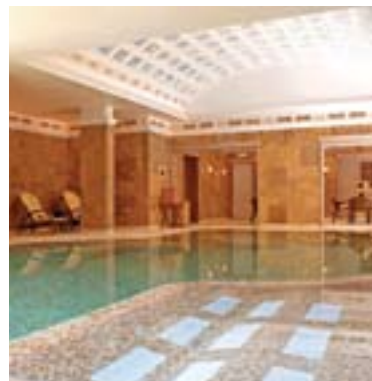
GPS: 38° 41' 29.00" N | 09° 25' 25.42" W

Website: <http://granderealvillaitalia.arteh-hotels.com>

FACILITIES

Rooms: 102 | Suites: 22

Bar | Children's Pool | Event Space(s) | Games Room | Garage |
Garden | Gym / Fitness Area | Internet Access | Laundry |
Massages | Private Car Park | Restaurant | Sauna | Shop | SPA |
Steam / Turkish Bath | Swimming Pool (Indoor, Outdoor) |
TV Lounge



FAROL DESIGN HOTEL

SETTLE INTO YOUR DESIGNER CHAIR AND TOUCH THE SEA.



The old Farol guest house, once a 19th century mansion owned by the Count of Cabral, was carefully refurbished becoming the current Farol Design Hotel, adjacent to the marina in the historical centre of Cascais.

The hotel undergone an interior and exterior renewal, aimed to reformulate its image while maintaining its attractive design, now focused on black and white tones.

The furniture surrounding the salt water pool, garden and lounge bar is modern, minimalist and very comfortable. These areas invite you to rest and relax, and the stunning sea view contributes to the mission!

We recommend watching the sunset to the sound of music and the taste of creative cocktails in the bar On the Rocks, and later trying the suggestions of The Mix restaurant, renewed with the same attractive and minimalist style.

Take advantage of the privileged climate, venture out to the different beaches that dot the coastline and have fun in the relaxed atmosphere of the village of Cascais. Accept the Farol Design Hotel's invitation.



PORTUGAL - CASCAIS

ADDRESS:
Avenida Rei Humberto II de Itália, 7
2750-461 Cascais
Portugal

GPS: 38° 41' 26.51" N | 09° 25' 20.41" W

Website: <http://faroldesignhotel.arteh-hotels.com>

FACILITIES

Rooms: 32 | Suites: 2

Bar | Event Space(s) | Internet Access | Laundry | Pets Allowed |
Private Car Park | Restaurant | Swimming Pool

REAL PALÁCIO

THE CLASSICAL AND THE ROMANTIC IN THE MIDST OF SEVEN HILLS.

Located in Lisbon close to the Parque Eduardo VII and the Marquês de Pombal, the sophisticated hotel Real Palácio is installed in adjacent buildings where the Guedes Quinhones palace, replete with centuries of history, stands out.

This palace, a characteristic example of the Chão style, was built in the 17th century and was the residency of the Quinhones for ten generations. The more recent buildings currently make up the hotel's new wings.

After being refurbished the palace still shows its original lines and retains inside its 1700s tile panels. The original architecture and decor have permitted the various characters of the buildings to be brought together, creating comfortable spaces with a classical spirit.

The rooms are spacious and at the palace you shall find a romantic decor corresponding to the epoch. At the restaurant or on the sunny terrace you may enjoy international cuisine, at the bar or out on the attractive patio you can savour a cocktail and at the health club you can relax or exercise the body.

Come see the seven hills of the secular city of Lisbon, the typical neighbourhoods filled with life, the museums and the monuments. Whether your trip is for business or leisure, pass through Real Palácio and witness the details of attentive service.



PORTUGAL - LISBON

ADDRESS:
Rua Tomás Ribeiro, 115
1050-228 Lisboa
Portugal

GPS: 38° 43' 56.11"N | 09° 09' 02.80"W

Website: <http://realpalacio.arteh-hotels.com>

FACILITIES

Rooms: 147

Bar | Event Space(s) | Garage | Gym / Fitness Area | Health Club |
Internet Access | Jacuzzi | Laundry | Massages | Restaurant |
Sauna | Steam / Turkish Bath | TV Lounge



HOTEL AVIZ

EXPERIENCE MODERN LISBON WITH THE CHARM OF THE PAST.



Well in the centre of Lisbon, the new Hotel Aviz maintains the spirit of the Picoas Palace that had once been its home and symbolised the romantic 1940s Lisbon. Kings, movie actors, spies and the cream of society at the time all came through this hotel due to its reputation of having the most luxurious service and the best restaurant.

Currently the hotel exhibits a modern and attractive architectural style whilst retaining the charm of a classical and timeless decor. From the memory of the past, besides amassing a vast number of items from the estate of the old Aviz, its ambiance, class and tradition of good hospitality were also recovered.

Some of the refined suites bear the names and details of the celebrities that made the hotel renowned like Calouste Gulbenkian, Frank Sinatra, Ava Gardner and Eva Péron.

In a welcoming environment the famous Aviz restaurant is once again integrated into the hotel and presents a menu that is inspired by the original recipes that established its reputation, but also introduces new culinary experiences always accompanied by the best wine list and the best service.

Enjoy the bar to mingle and reminisce about the experiences of the day spent in the city of Lisbon which is also replete with tradition and history.



PORTUGAL - LISBON

ADDRESS:
Rua Duque de Palmela, 32
1250-098 Lisboa
Portugal

GPS: 38° 43' 25.97" N | 09° 09' 01.23" W

Website: <http://hotelaviz.arteh-hotels.com>

FACILITIES

Rooms: 56 | Suites: 14

Bar | Event Space(s) | Garage | Internet Access | Laundry |
Restaurant | Solarium | Steam / Turkish Bath

HOTEL BRITANIA

RELIVE THE REFINEMENT OF THE PAST AND MAKE YOUR OWN HISTORY.

The Hotel Britania can be found in a 1940's building designed by Cassiano Branco, renowned contemporary architect. The set of many stories, of heated conversations between the intellectuals and artists of the time, and of war time conspiracies featuring diplomats and spies, this hotel is worthy of your stay.

Considered one of the most luxurious hotels in Lisbon, its design perfectly harmonises the Art Deco style with nationalist icons. This inheritance has been preserved, and the recent restoration and the antique furniture have enabled it to become listed as a building of historical interest.

The walls and the floor in the hall are covered in marble and the resulting space is illuminated by the light of the opal and bronze stroked glass deco chandeliers. The wood panelled bar heightens the objects and furniture of yesteryear. The welcoming and relaxing lounge is an invitation to listen to good music, to contemplate the fireplace or to look at pictures that witness a past richly steeped in history.

The spacious rooms also exhibit Art Deco furniture in harmony with modern textiles and warm colours. The marble bathrooms have been meticulously restored and include all the comforts that one has become accustomed to in present times.

In this hotel one lives the tranquil atmosphere of the epoch and experiences the courtesy of service that has over 50 years of tradition in hospitality. Its location is ideal to set out in search of a Lisbon that is ancient and of the Lisbon that has been completely renovated.



PORTUGAL - LISBON

ADDRESS:

Rua Rodrigues Sampaio, 17
1150-278 Lisboa
Portugal

GPS: 38° 43' 17.78" N | 09° 08' 43.49" W

Website: <http://hotelbritania.arteh-hotels.com>

FACILITIES

Rooms: 32 | Suites: 1

Bar | Garage | Internet Access | Laundry | Library



HOTEL LISBOA PLAZA

EXPERIENCE THE ATMOSPHERE, THE CHARACTER AND THE TRADITION OF A HOTEL DEDICATED TO WELL-BEING.



Located next to the cosmopolitan Avenida da Liberdade, its eyes set on the botanical gardens, is the classical Hotel Lisboa Plaza, an icon of hospitality and heritage in the city of Lisbon.

Inaugurated in 1954 as the Hotel Condestável, its history is linked to the unforgettable and attractive Parque Mayer, the stage for entertainment in a Lisbon of yore that contributed to this avenue being internationally recognized.

The increase in the number of tourists visiting its cafés, theatres and houses of "fado", motivated the construction of this high quality hotel. Lucínio Cruz was in charge of the architectural project and strove to promote the modernity and well-being of the guests in an innovative fashion.

The façade is austere with an international style. The enveloping spaces are full of charm and comfort thanks to the classical design conceived by Graça Viterbo and the attention given to all the details. The hotel maintains its character, harmoniously combining the tradition of its history with the demands of modern times in a spirit of great versatility.

The Hotel Lisboa Plaza is the ideal harbour to return to for a rest in its comforting rooms and to experience its family ambience after uncovering the city's well-kept secrets.



PORTUGAL - LISBON

ADDRESS:
Travessa do Salitre, 7
1269-066 Lisboa
Portugal

GPS: 38° 43' 07.26"N | 09° 08' 43.40"W

Website: <http://hotellisboaplaza.arteh-hotels.com>

FACILITIES

Rooms: 94 | Suites: 12

Bar | Event Space(s) | Garage | Internet Access | Laundry |
Library | Restaurant

TIVOLI JARDIM

ELEGANT ENVIRONMENTS AND A NATURE INSPIRED DECORATION.

It's in Lisbon's historical centre and close to the busy Avenida da Liberdade that the Tivoli Jardim is situated, a city hotel with cared service and excellent facilities for a leisure or business stay.

It was renewed in 2008 with a contemporary decoration inspired in nature's freshness that provides elegant and new environments, transmitting a simplicity and equilibrium that invite calmness.

The common spaces are intimate and the rooms are comfortable and well equipped. The event rooms are ideal for those who seek small business meetings, exclusive and that require privacy.

In the innovative oval bar it's possible to observe some dishes being made in the restaurant. Chef Olivier presents an eclectic and original menu that mixes Mediterranean ingredients with international dishes. The flavours are unique and innovative and will astonish even the most demanding taste buds.

Near the hotel you'll find streets and avenues full of history, from the Marquês de Pombal down to the Baixa or from the São Jorge Castle to the Bairro Alto. There are countless shops, terraces, restaurants and theatres to brighten up your days and nights in Lisbon.



PORTUGAL - LISBON

ADDRESS:
Rua Júlio César Machado
1250-135 Lisboa
Portugal

GPS: 38° 43' 13.24"N | 09° 08' 50.21"W

Website: <http://tivolijardim.arteh-hotels.com>

FACILITIES

Rooms: 119

Bar | Event Space(s) | Garden | Internet Access | Laundry |
Private Car Park | Restaurant | Swimming Pool



HERITAGE AV LIBERDADE

DISCOVER THE HISTORICAL PAST AND THE COSMOPOLITAN PRESENT OF LISBON.



In Lisbon, on the corner of the Avenida da Liberdade with the Largo da Anunciada, is a beautiful 18th century building, sober and discreet in its architectural style, which is home to the charming hotel Heritage Av Liberdade.

On this square there used to be a Monastery for Dominican nuns and the Palace of the Ericeiras, both destroyed by the 1755 earthquake. The Ericeiras were the proprietors of a large part of the land that gave rise to the Passeio Público, the current Avenida da Liberdade, and the hotel's building.

The refurbishment project was conceived by Miguel Cândia Martins, the Portuguese architect famous for his interventions at the Buddha Bar in Paris, Strictly Hush in London and the Man Ray in New York.

The building's 18th century façade was kept, as well as the masonry and the railings on the balconies. Inside, the Pombal age tiles, the wooden portals and pieces of antique furniture were restored. The outcome is a comfortable and refined environment with a cosmopolitan feel.

Located in the heart of Lisbon's historical centre, the hotel is very close to the city's typical areas. Walk down the avenue in the direction of Rossio and Chiado, climb the hills into the Bairro Alto, Alfama or the São Jorge Castle that has watched over the city for centuries.



PORTUGAL - LISBON

ADDRESS:
Avenida da Liberdade, 28
1250-145 Lisboa
Portugal

GPS: 38° 43' 03.08" N | 09° 08' 33.90" W

Website: <http://heritageavliberdade.arteh-hotels.com>

FACILITIES

Rooms: 41 | Suites: 1

Bar | Event Space(s) | Gym / Fitness Area | Internet Access |
Jacuzzi | Library

SOLAR DO CASTELO

VENTURE AWAY FROM THE SAFETY OF THE BATTLEMENTS AND CONQUER THE CITY OF LISBON.

At the top of the city of Lisbon, within the walls of the São Jorge Castle, the noble hotel Solar do Castelo was born, fruit of the refurbishment of the Palace of Kitchens, built in the second half of the 18th century on the grounds of the ancient Royal Kitchens.

The refurbishment project, developed by the architect Vasco Massapina, maintained the sober lines of the building practices from the epoch of the Marquis of Pombal. These traces are most visible on the windows and at the main door and are perfectly combined with elements of greater freedom and creativity.

On both its levels and the mansard, on the main patio and in the gardens, the signs of Medieval times and the Pombal pattern tiles, along with pastoral motifs, confer richness and originality to this small palace.

The purity of the lines of the furniture and the contemporary pieces contrast with the antiques of centuries past and the building materials of the time like stone, iron, leather and wood. Contemporary design, replete with comfort and refined details, was the choice made for the decor of the rooms.

During your stay at the Solar do Castelo enjoy the hospitality of those who excel in the art of receiving others, as well as the centuries old history of this place, the birthplace of the city of Lisbon.



PORTUGAL - LISBON

ADDRESS:
Rua das Cozinhas, 2
1100-181 Lisboa
Portugal

GPS: 38° 42' 47.49" N | 09° 08' 00.34" W

Website: <http://solarcastelo.arteh-hotels.com>

FACILITIES

Rooms: 14

Bar | Garage | Garden | Internet Access | Laundry | Library



BAIRRO ALTO HOTEL

A REFERENCE TO LUXURY IN THE HISTORICAL AND CULTURAL CENTRE OF LISBON.



With its eyes set on Luís de Camões Square and very close to the São Carlos National Theatre in Lisbon, the luxurious and cosmopolitan Bairro Alto Hotel is implanted into the former Grand Hotel de l'Europe where many renowned European artists stayed during the 19th and 20th centuries.

In 2001, almost 20 years after its closure, the successful restoration project was initiated with the aim of repositioning the hotel into the international panorama in accordance with the quality and prestige commanded by its rich history.

The building underwent an intense and brilliant architectural intervention in order to maintain its attractive aesthetic heritage. The interior design materials with French, English and Italian inspiration were used with refinement, comfort and exquisite design and harmoniously blended into the atmosphere of Lisbon and its history.

In the cosy and sophisticated rooms and suites, as in all the hotel spaces, contemporary touches were combined with details from the thirties to the fifties. The wooden floors, the walnut furniture, the woollen rugs and the varied linen and silk fabrics are all of special note and perfectly accompanied by frescoes on the walls.

At the restaurant exceptional cosmopolitan cuisine can be appreciated. On the terrace, the unique sunset over the city embraced by the Tagus River should be admired. In the evening, the surrounding bohemian Bairro Alto is proof that certain things never change.



PORTUGAL - LISBON

ADDRESS:
Praça Luís de Camões, 8
1200-243 Lisboa
Portugal

GPS: 38° 42' 37.47" N | 09° 08' 36.01" W

Website: <http://bairroaltohotel.arteh-hotels.com>

FACILITIES

Rooms: 51 | Suites: 4

Bar | Event Space(s) | Gym / Fitness Area | Internet Access |
Laundry | Massages | Restaurant | TV Lounge

PESTANA PALACE

MAKE YOURSELF AT HOME IN A SETTING OF LUXURY, REFINEMENT AND HISTORY.

Located in one of the most tranquil areas of Lisbon the hotel Pestana Palace was born from the restoration and refurbishment of the former Marquês de Valle Flôr Palace, dated from the 19th century and classified as a national monument.

This majestic and attractive palace was built by an entrepreneur who made his fortune with successful agricultural endeavours in São Tomé and Príncipe. His connections to France influenced the design of the building, with styles from the Luis XIV, Regency, Luis XV and Luis XVI eras, creating a surprising historical setting.

In the impressive inner spaces the rooms and halls are ideal for parties, banquets or other prestigious events. The rooms and suites, located in a new wing, are of the utmost comfort and fully equipped. In the palace there are the luxury suites with a refined epochal decor.

From the restaurant one can appreciate the view onto the lush gardens that surround the palace and on warmer days one can also enjoy a meal served by the pool in a 19th century oriental pavilion.

A visit to the historical city of Lisbon is also recommended, wandering through the typical neighbourhoods and becoming acquainted with the main museums and monuments. At night, visit the Docas or enjoy live music at the bar of the magnificent Pestana Palace.



PORTUGAL - LISBON

ADDRESS:
Rua Jau, 54
1300-314 Lisboa
Portugal

GPS: 38° 42' 12.94"N | 09° 11' 10.73"W

Website: <http://pestanapalace.arteh-hotels.com>

FACILITIES

Rooms: 176 | Suites: 18

Bar | Chapel | Event Space(s) | Garage | Garden | Gym/ Fitness
Area | Health Club | Internet Access | Jacuzzi | Laundry |
Massages | Restaurant | Sauna | SPA | Steam / Turkish Bath |
Swimming Pool (Indoor, Outdoor)



YORK HOUSE

AFTER A WELL SPENT DAY OR BEFORE A NIGHT SPENT WELL, RETREAT TO THE GARDEN TO DELIGHT IN A CANDLE-LIT SUPPER.



By the Tagus River, in the centre of Lisbon and receiving guests for over one hundred years, the York House resulted from the adaptation of the early 17th century Marianos Convent.

The style adopted, the tapestries, marbles and polished wooden floor, convey respect for the convent's history, whilst creating an inviting atmosphere of charm and well-being.

A small patio replete with trees, flowers and plants is located at the centre of the building, and proves to be an ideal refuge to rest, relax and enjoy an evening drink.

The rooms, set around the patio, combine design with touches of elegance, in harmony with the style of the building, some of which offer a magnificent view of the river and the roof tops of the city.

Close-by there's an abundance of monuments and museums to visit during the day, such as the Ancient Art museum, as well as plenty of restaurants, bars and discos to guarantee amusement throughout the night.

Over the years celebrities have been unable to resist the romantic appeal of the York House. Upon visiting Lisbon, allow yourself to witness the same charm that enticed John Le Carré, Marcello Mastroianni and Marguerite Duras.



PORTUGAL - LISBON

ADDRESS:
Rua das Janelas Verdes, 32
1200-691 Lisboa
Portugal

GPS: 38° 42' 22.24" N | 09° 09' 32.29" W

Website: <http://yorkhouse.arteh-hotels.com>

FACILITIES

Rooms: 32

Bar | Event Space(s) | Garage | Garden | Internet Access |
Laundry | Massages | Restaurant | Shop

AS JANELAS VERDES

OPEN THE WINDOWS AND LET IN ROMANCE FROM AN EPOCH GONE BY.

Next to the Ancient Art museum, in the historical and romantic Rua das Janelas Verdes, there is an austere and discreet stately house to behold, dating from the 18th century. This is a house where one wants to discover every detail, feel its romantic and welcoming atmosphere and relive the stories of a past Lisbon.

Tradition has it that this ancient palace belonging to the Count of Sabugosa was the residence and inspiration for Eça de Queirós's "O Ramalhete," the famous house featured in his masterpiece "Os Maias". The memory of his presence lives on in the period mood that surrounds and envelopes us.

Its Neo-Classical interior features a living room that exalts the fireplace, the ancient piano, the furniture, the books, the paintings and the small artworks. An elegant spiral staircase leads into the large, cheerful and sunny rooms.

From the library a romantic garden is visible, the iron tables and chairs, the small fountain and the climbing plant wound into the iron stairs climbing into the balconies of the rooms all catch the eye.

The city of Lisbon and its Tagus River take their place as the background for the hotel As Janelas Verdes, lost in time yet such an admirable combination of the past and the present that it warrants a visit.



PORTUGAL - LISBON

ADDRESS:

Rua das Janelas Verdes, 47
1200-690 Lisboa
Portugal

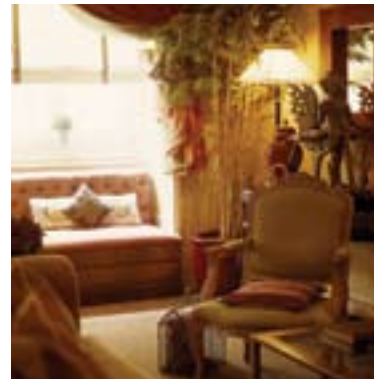
GPS: 38° 42' 19.86" N | 09° 09' 37.14" W

Website: <http://asjanelasverdes.arteh-hotels.com>

FACILITIES

Rooms: 29

Bar | Garage | Garden | Internet Access | Laundry | Library



ALTIS BELÉM HOTEL & SPA

NAVIGATE THROUGH CONTEMPORARY DESIGN IN A DISCOVERY OF THE CITY OF LISBON.



It's on the North bank of the Tagus River mouth in Lisbon, near the emblematic Jerónimos Monastery, Belém Tower and Discoveries Monument, that the innovative and captivating five star hotel Altis Belém Hotel & SPA can be found.

The hotel features a modern design of straight lines, with seductive and minimalist interior decoration, representing a contemporary vision of the Portuguese Discovery of unknown territories.

In the rooms the white walls and brown wood floor mix with vibrant coloured elements in the carpets, furniture and wall panels. The light and blue tones of the Tagus River that flow through the windows will certainly fascinate you.

In the Feitoria restaurant, homage is paid to the arrival of the Portuguese navigators in Japan in the 16th century and traditional gastronomy is merged with exotic specialties. In the Mensagem cafeteria, light meals and sushi dishes are suggested, to savour in the terrace overlooking the marina. In the bar 38° 41', its exact coordinates, you may choose a different cocktail and relax to the sound of the best music with a river view.

A holistic experience for body and mind awaits you in the SPA. At your disposal are the sauna and hamman, several beauty treatments, and also Tibetan or Thai massages, Japanese reiki and shiatsu, that can be enjoyed by the roof top swimming pool, overlooking the city of Lisbon.



PORTUGAL - LISBON

ADDRESS:
Doca do Bom Sucesso
1400-038 Lisboa
Portugal

GPS: 38° 41' 37.42"N | 09° 12' 35.28"W

Website: <http://altisbelemhotelspa.arteh-hotels.com>

FACILITIES

Rooms: 45 | Suites: 5

Bar | Event Space(s) | Garage | Gym / Fitness Area | Internet
Access | Jacuzzi | Laundry | Massages | Private Car Park |
Restaurant | Sauna | SPA | Steam / Turkish Bath | Swimming Pool
(Indoor, Outdoor) | TV Lounge

PÁTEO DOS SOLARES

AN OPEN DOOR TO IMMENSE PLAINS AND HISTORICAL CITIES.

The romantic hotel Páteo dos Solares is located where the São José Fortress once stood in the 17th century, in the white and picturesque city of Estremoz in the heart of the High Alentejo. The building was recently rebuilt, restored and declared a site of municipal heritage interest.

Its interior holds cosy rooms equipped with great amenities, some even include a fireplace and a hydromassage tub, and all have characteristic details.

There are also several spaces for enjoying the company of others, for fun or for relaxation, as well as unique rooms for organizing events. The bar and the terrace open onto the garden and the exterior swimming pool that invite one to relax.

Comforted by the warmth of a fireplace and in the midst of ancient tile panelling, experiment the flavours of the region complemented by traditional Portuguese cuisine sublimely prepared by the Alzulaich restaurant.

The central location of the hotel is the perfect starting point for exploring the Estremoz and the Alentejo region. The Páteo dos Solares has created excellent programmes to guide guests on trips through the vast plains, discovering the neighbouring historical cities and their monuments or just enjoying stimulating outdoor activities.



PORTUGAL - ESTREMOZ

ADDRESS:
Rua Brito Capelo
7100-562 Estremoz
Portugal

GPS: 38° 50' 22.71"N | 07° 35' 19.78"W

Website: <http://pateodossolares.arteh-hotels.com>

FACILITIES

Rooms: 41 | Suites: 1

Bar | Event Space(s) | Games Room | Garden | Internet Access |
Laundry | Pets Allowed | Private Car Park | Restaurant |
Swimming Pool



POUSADA NOSSA SENHORA DA ASSUNÇÃO

UNCOVER A REFUGE DRESSED IN WHITE ON THE OPEN PLAIN.



In the centre of the Alentejo and in a vast valley in Arraiolos, the lines of an ancient 16th century monastery were drawn and have now been transformed into the Pousada Nossa Senhora da Assunção.

At this historical pousada the whiteness and austere architecture, characteristic of these buildings, have been perfectly combined with attractive and simple contemporary design, creating a lovely and cosy feel in all its spaces.

We suggest putting the diet on hold so that you may delight in the typical cuisine of the Alentejo found on the restaurant's menu. These extra calories can easily be burned off later with a few laps in the swimming pool overlooking the valley. A well earned rest can be taken on the sunny terrace, in the shade of the monastery's cloisters or in the tranquility of your room.

Be sure to visit the nearby traditional village of Arraiolos with its houses dressed in blue and white, to climb to the castle that watches over it and to feel the rugs that have become its claim to worldwide fame. You may also wish to venture slightly further out and arrive in Évora, Estremoz or Vila Viçosa, a few of the places in the Alentejo that shouldn't be missed.

As an alternative to a day of culture, a more active day can be planned with a tennis match, canoeing, attempting to hunt partridge or exploring the plains of the Alentejo.



PORTUGAL - ARRAIOLOS

ADDRESS:
Vale das Flores, Apartado 61
7044-909 Arraiolos
Portugal

GPS: 38° 43' 54.39" N | 07° 59' 22.22" W

Website: <http://pousadanossasenhoraadaassuncao.arteh-hotels.com>

FACILITIES

Rooms: 32

Bar | Chapel | Children's Pool | Event Space(s) | Fireplace | Games Room | Garden | Internet Access | Laundry | Private Car Park | Restaurant | Swimming Pool | Tennis Court | TV Lounge

POUSADA DOM JOÃO IV

IN THE LABYRINTHS OF THE CONVENT RELIVE LEGENDS AND TALES OF THE PAST.

In the Chagas de Cristo Royal Convent founded by the Duques of Bragança in the beginning of the 16th century, which has for many years made the charming Vila Viçosa in the Alentejo even more beautiful, the Pousada Dom João IV was built.

Restored with authenticity and maintaining all the original architecture, the atmosphere transports us to another reality and to times of monasticism. The successive constructions of cells, oratories and retreats that were built by the religious Clarissas who sought shelter in this ancient convent are all still perfectly visible.

The rooms of this historical pousada, distinct and varied, are characterised by being labyrinthine and thematically based on the legends and tales of the past. On the ceilings and walls we find references to antiquity and the history of the spaces, of which the paintings and the tile panels should be highlighted.

The cuisine is based on the delicious traditional and conventual recipes of the Alentejo region, replete with divine flavours and aromas that must be experienced.

A visit to Vila Viçosa is obligatory to become acquainted with its streets, museums and monuments, without neglecting trips to the neighbouring towns of Estremoz, Évora or Borba which are just as rich in history and culture.



PORTUGAL - VILA VIÇOSA

ADDRESS:

Convento das Chagas - Terreiro do Paço
7160-251 Vila Viçosa
Portugal

GPS: 38° 46' 54.41"N | 07° 25' 15.70"W

Website: <http://pousadadomjoaoiv.arteh-hotels.com>

FACILITIES

Rooms: 34 | Suites: 2

Bar | Children's Pool | Event Space(s) | Games Room | Garden |
Internet Access | Laundry | Private Car Park | Restaurant |
Swimming Pool | TV Lounge



CONVENTO DE SÃO PAULO

DELIGHT IN THE REGIONAL GASTRONOMY AFTER AN INVIGORATING WALK THROUGH THE MOUNTAINSIDE.



Amidst the immense Alentejo landscape, nestled into 600 hectare estate between Estremoz and Redondo lies the Convento de São Paulo, constructed in 1182 by hermits who valued tranquillity, well-being and prayer.

Currently converted into a hotel, the Convento de São Paulo perpetuates, to this day, the atmosphere valued by the hermit monks. By complementing an almost millenary history with the comfort of today, this hotel has become a unique destination.

The sumptuous collection of Portuguese tiles, the terracotta bas-reliefs, the frescoes, a Florentine fountain and the old church, all justify the public interest classification obtained and will certainly also be worth your stay.

Some rooms are set in the convent's ancient cells but possess all the comforts of modern life. The restaurant, the canteen where the hermits had their meals, serves the Alentejo's regional dishes elaborated with produce from the estate and accompanied by wine from its cellar.

The day can be enthusiastically spent discovering all of nature's wealth and the vast heritage of ancient civilisations, from Pre-historic monuments to Gothic constructions, or the Roman roads and temples littered all over the estate and the Alentejo in general.

Night time is enveloped by an unequalled tranquillity where the charm and quiet of the Convento de São Paulo, is gently rocked by the sounds of nature that invite a well-deserved rest.



PORTUGAL - REDONDO

ADDRESS:
Aldeia da Serra
7170-120 Redondo
Portugal

GPS: 38° 43' 33.69" N | 07° 34' 53.63" W

Website: <http://conventodesaopaulo.arteh-hotels.com>

FACILITIES

Rooms: 25 | Suites: 7

Bar | Event Space(s) | Games Room | Garden | Internet Access |
Laundry | Private Car Park | Restaurant | Swimming Pool |
Tennis Court

CONVENTO DO ESPINHEIRO

A LUXURIOUS EXPERIENCE IN A HISTORICAL ATMOSPHERE.

Located close to the city of Évora, well in the heart of the vast plains of the Alentejo, is the ancient and recently refurbished Convento do Espinheiro, a convent currently transformed into a surprising luxury hotel.

The convent has its origins in a legend that tells of an apparition of the Virgin Mary on a thorn bush. In 1458, given the importance of this place as a destination for pilgrimages, a church and later a convent were built and even hosted the Kings of Portugal.

Currently, after three years of refurbishment work, the building retains its character, with an attractive style that respects its history and also a luxurious interior design. The rooms and suites, fully equipped to guarantee your utmost comfort, are distributed throughout the new wing and the convent.

Several details that reflect the harmony of the past intertwined with the present stand out brilliantly. In the former wine cellar a refined gourmet restaurant has been created. The kitchen once used by the monks has been converted into a unique piano bar and the Gothic cistern has been transformed into a delightful area for tasting regional products and wines.

During your stay be sure not to miss the relaxing SPA treatments which fuse the highest quality natural ingredients with contemporary and ancestral therapeutic techniques. Also be sure to take the opportunity to visit the historical centre of Évora, a World Heritage site.



PORTUGAL - ÉVORA

ADDRESS:

Convento do Espinheiro - Canaviais
7005-839 Évora
Portugal

GPS: 38° 36' 03.60" N | 07° 53' 18.70" W

Website: <http://conventodoespinheiro.arteh-hotels.com>

FACILITIES

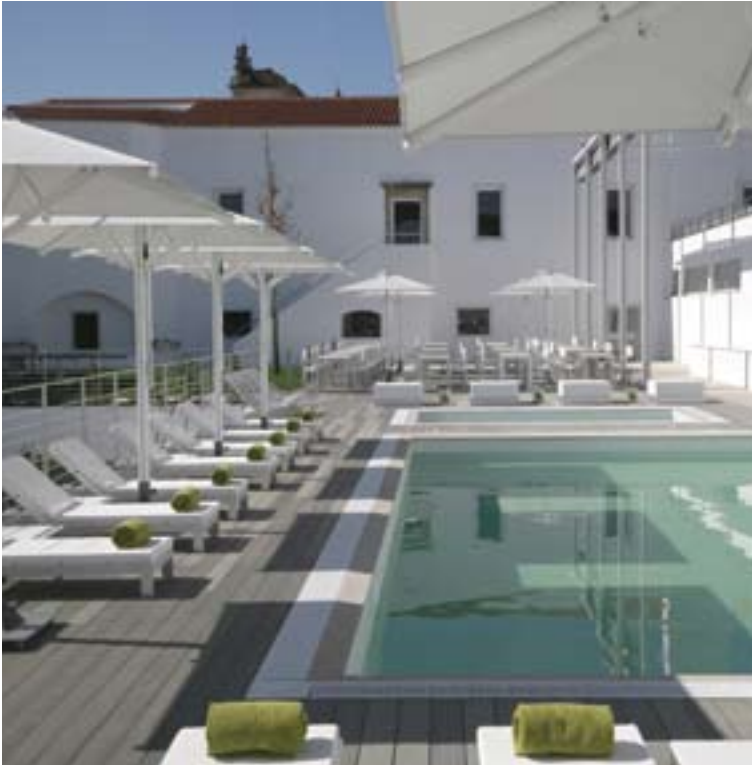
Rooms: 86 | Suites: 6

Bar | Chapel | Children's Pool | Event Space(s) | Garden | Gym
/ Fitness Area | Heliport | Internet Access | Jacuzzi | Laundry |
Massages | Private Car Park | Restaurant | Sauna | SPA | Steam /
Turkish Bath | Swimming Pool (Indoor, Outdoor) | Tennis Court



M'AR DE AR AQUEDUTO

ORIGINALITY, CREATIVITY AND SOPHISTICATION IN A UNIQUE EXPERIENCE.



The hotel M'AR De AR Aqueduto is tucked away in Évora's beautiful historical city centre, snugly woven into the city's medieval fabric and right in the heart of this World Heritage site.

The hotel was born from the refurbishment of the Sepúlveda's 16th century palace that still preserves the magnificent chapel, the domed ceilings and three period windows. A new wing was also added and perfectly integrated with the historical environment while presenting a new refined contemporary design in the shared spaces, as well as in the rooms and suites.

The buildings have been implanted into the site in such a way that allows the enjoyment of an exclusive and peaceful exterior space consisting of areas for leisure, a terrace, adult and children's swimming pools, and a bar over the aqueduct with a view to the surrounding monuments.

The Degust'AR restaurant, situated in the palace, is comfortable and intimate with a unique character conveyed by the domed ceilings, the archways and the frescoes decorating the space. The chef's signature menu takes the cuisine of the Alentejo region as a focal point, but innovates by introducing a creative Mediterranean inspiration.

The modern SPA, with its relaxation chambers, sauna, Turkish bath and Vichy shower, warrants special mention. After a pleasant walk through Évora, experiencing the diverse massage techniques of Indian origin is highly recommended as an ideal way to recover, detoxify, and rejuvenate the body and the soul.



PORTUGAL - ÉVORA

ADDRESS:

Rua Cândido dos Reis, 72
7000-582 Évora
Portugal

GPS: 38° 34' 28.92"N | 07° 54' 47.24"W

Website: <http://mardearaqueduto.arteh-hotels.com>

FACILITIES

Rooms: 60 | Suites: 4

Bar | Children's Pool | Event Space(s) | Garage | Garden | Gym
/ Fitness Area | Internet Access | Jacuzzi | Laundry | Library |
Massages | Restaurant | Sauna | Solarium | SPA |
Steam / Turkish Bath | Swimming Pool | TV Lounge

POUSADA DOM AFONSO II

WATCH VALLEYS AND PLAINS FROM ATOP A CENTURIES OLD CASTLE.

A few kilometres from the city of Lisbon, the Pousada Dom Afonso II can be found in Alcácer do Sal, with the luxuriant green valley of the Sado River as its background and surrounded by charming plains. An idyllic refuge carefully guarded in a millenary castle.

In this castle, marked by the passage of five thousand years of history that goes back as far as the Neolithic era, one can witness the remains of several cultures such as the Phoenician, the Arabic and the Roman.

Currently converted into a historical pousada it offers all the comforts of today accompanied by the high quality of the service. The decor and the design for the interiors and the rooms are exquisite and contemporary in harmonious contrast to the building's imposing architecture.

In the restaurant the most delicious typical regional dishes can be savoured and in unique spaces for events, conferences or banquets can be organized for businesses or for private hire.

The day can be filled with the most diverse activities ranging from golf, canoeing on the river, strolling through the paths of the Sado estuary's protected zones, going up in a hot-air balloon or enjoying the sunshine on the beaches with the golden sand and the blue sea of the Tróia Peninsula or Sesimbra.



PORTUGAL - ALCÁCER DO SAL

ADDRESS:

Castelo de Alcácer do Sal
7580-197 Alcácer do Sal
Portugal

GPS: 38° 22' 19.82"N | 08° 30' 49.42"W

Website: <http://pousadadomafonsoii.arteh-hotels.com>

FACILITIES

Rooms: 33 | Suites: 2

Bar | Children's Pool | Event Space(s) | Fireplace | Games Room | Garden | Internet Access | Laundry | Private Car Park | Restaurant | Swimming Pool | TV Lounge



POUSADA VALE DO GAIO

FIND YOUR NEST IN THIS TRANQUIL VALLEY.



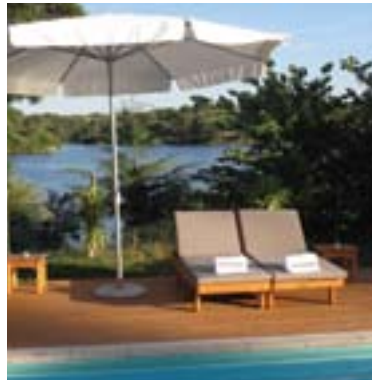
In the middle of Alentejo, near the towns of Torrão and Alcácer do Sal, the Pousada Vale do Gaio rises over a beautiful and large lagoon. Come and feel the harmony and peace of this place that will last in your memory.

Here you will find a paradise of silence, interrupted only by the rare charm of sheep bells, with a horizon as far as the eye can see, ploughed fallow fields, green harvested fields and grey patches of cork oak and olive groves.

The surroundings enter through the pousada, decorate its gardens and pool, fill the elegant spaces with light and colour and embrace us in the comfortable rooms with a view of nature.

On the superb terrace, with a panoramic view, we can start the day with a traditional breakfast or finish with a dinner of the best regional gastronomy, while storks fish on the margins of the lagoon and the birds fly over their nests.

This is the perfect place to practice outdoor sports. Try hunting or fishing and take canoe, walking or bicycle trips by the valley. Alternatively, just relax in this new nesting place in Alentejo.



PORTUGAL - TORRÃO

ADDRESS:
Barragem Trigo de Morais
7595-034 Torrão
Portugal

GPS: 38° 15' 01.21" N | 08° 17' 39.45" W

Website: <http://pousadavaledogαιο.arteh-hotels.com>

FACILITIES

Rooms: 14

Bar | Games Room | Garden | Internet Access | Laundry | Private
Car Park | Restaurant | Swimming Pool

HOTEL DOM CARLOS REGIS

DISCOVER COMFORT AND WELL-BEING AMID NATURE.

Perfectly integrated into the natural landscape which frames the Caldas de Monchique SPA Village in the Algarve, the Hotel Dom Carlos Regis is the ideal departure point to benefit from the health and well-being SPA therapies can offer.

History in this place is long, dating back to Roman times, the first to enjoy these thermal waters, continuing through the Portuguese monarchy, passing by ecclesiastical hands before belonging to the state. All of which throughout the years built the infrastructures for an optimal use of the potential of this SPA.

Recently, already under the guidance of the new owners, extensive renovation and refurbishment works were conducted on the entire site to endow the complex with modern equipment whilst maintaining the harmony with the surrounding natural environment.

The hotel has also benefited from this restoration and now presents ample rooms and suites with a view of the mountain, a comfortable lounge and a charming pub where one can enjoy a night cap.

Before or after completing a reinvigorating SPA treatment, explore the surrounding environment and find, amongst the trees, a restaurant with regional and international cuisine, an adorable terrace and a craft store where a keepsake of an unforgettable stay can be purchased.



PORTUGAL - MONCHIQUE

ADDRESS:

Complexo Termal Caldas de Monchique
8550-232 Monchique
Portugal

GPS: 37° 17' 07.80" N | 08° 33' 16.15" W

Website: <http://hoteldomcarlosregis.arteh-hotels.com>

FACILITIES

Rooms: 18 | Suites: 4

Bar | Chapel | Children's Pool | Event Space(s) | Fireplace |
Garden | Gym / Fitness Area | Internet Access | Massages | Pets
Allowed | Private Car Park | Restaurant | Sauna | Shop | SPA |
Steam / Turkish Bath | Swimming Pool (Indoor, Outdoor)



HOTEL CENTRAL

FEEL THE BALANCE BETWEEN THE BLUENESS OF THE SKY AND THE GREENNESS OF THE MOUNTAIN.



The Hotel Central is ensconced in the beautiful Monchique mountain ridge in the South of Portugal, within the Caldas de Monchique SPA Village, a small and unique thermal SPA in the Algarve.

After recent renovation this secular hotel has recovered the enchantment of the 19th century and combined it with indispensable modern comforts. The rooms are comfortable and the lounge area acquired the charm of a private residence.

The SPA benefits from the medicinal properties of the local thermal water that helps to reestablish the natural balance of the body and mind through several well-being programs, which include special baths and jet showers, varied massages, localized and general therapies amongst many other treatments for you to enjoy.

Besides the SPA, this village that merges into the mountain offers well equipped spaces to organise corporate events, a restaurant and terrace by the central square that offers delicious regional flavours, a cosy bar and outdoor swimming pools.

The location is excellent, allowing an enjoyment of the mountain, with trails for those who love leisurely strolls and the ideal conditions for those wishing to test their endurance on more extreme activities. Close to Monchique the beaches on the coast of the Algarve are an invitation to a refreshing dip in the sea.



PORTUGAL - MONCHIQUE

ADDRESS:

Complexo Termal Caldas de Monchique
8550-232 Monchique
Portugal

GPS: 37° 17' 07.80" N | 08° 33' 16.15" W

Website: <http://hotelcentral.arteh-hotels.com>

FACILITIES

Rooms: 13

Bar | Chapel | Children's Pool | Event Space(s) | Fireplace |
Garden | Gym / Fitness Area | Internet Access | Massages | Pets
Allowed | Private Car Park | Restaurant | Sauna | Shop | SPA |
Steam / Turkish Bath | Swimming Pool (Indoor, Outdoor)

ESTALAGEM DOM LOURENÇO

A NATURAL PARADISE TO STIMULATE THE SENSES.

The small and cosy Estalagem Dom Lourenço hides in the Algarve mountain ridge and is part of the stimulating Caldas de Monchique SPA Village, a modern SPA complex.

This hotel dates from the 17th century when the construction of the ancient inn, where it is currently implanted, began. Today it is completely refurbished and renovated. Inside, both the delightful living room with a fireplace and the comfortable rooms display a classical simple style that represents the height of good taste.

On the terrace, with a view of the trees in the picturesque square, enjoy regional snacks. To savour a more elaborate meal be sure to visit the 1692 restaurant whose name honours the date of the first recorded public uses of the mountain ridge's SPA waters.

Like the first Romans that established themselves here, enjoy the medicinal properties of this water. Dive into the hydromassage pool, take a Vichy or jet shower and complete the experience with a relaxing massage.

If there is still courage to leave this paradise for the body and mind, enjoy long strolls through the mountain trails surrounded in luxuriant green nature.



PORTUGAL - MONCHIQUE

ADDRESS:

Complexo Termal Caldas de Monchique
8550-232 Monchique
Portugal

GPS: 37° 17' 07.80"N | 08° 33' 16.15"W

Website: <http://estalagemdomlourenco.arteh-hotels.com>

FACILITIES

Rooms: 12

Bar | Chapel | Children's Pool | Event Space(s) | Fireplace |
Garden | Gym / Fitness Area | Internet Access | Massages | Pets
Allowed | Private Car Park | Restaurant | Sauna | Shop | SPA |
Steam / Turkish Bath | Swimming Pool (Indoor, Outdoor)



VILA JOYA

SURPRISING VIEWS, AROMAS AND FLAVOURS.



On a cliff above the sea in Southern Portugal's Algarve, the distinguished hotel Vila Joya shines like a precious stone offering exclusivity, luxury and good taste.

Having once been a Portuguese style vacation house, now refurbished with touches of Moorish inspiration, the Vila Joya is surprising in the ethnic and luxurious style of its decor that transports us into an elegant Oriental palace.

The property's exposure and the luminosity it offers are perfect. The green of the Mediterranean gardens, the yellow of the beach and the blue of the Atlantic Ocean accompany us throughout the different spaces, flooding them with floral and maritime fragrances.

This landscape can be appreciated from the terrace where breakfast is served, from the bar where the sunset can be enjoyed and from the restaurant where flavours, imagined by the chef and awarded Michelin stars, can be savoured. Also from the rooms and suites, all comfortable and different, one can wake up to this unique scenery.

With dedicated service guaranteed, this is the place to enjoy the best the Algarve has to offer, from the radiant sunshine or endless beaches and private bays to the best golf courses in the world.

PORTUGAL - ALBUFEIRA - GUIA

ADDRESS:

Praia da Galé - Guia
8201-902 Albufeira
Portugal

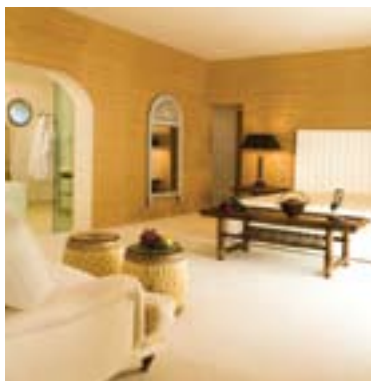
GPS: 37° 04' 49.80" N | 08° 18' 49.31" W

Website: <http://vilajoya.arteh-hotels.com>

FACILITIES

Rooms: 12 | Suites: 8

Bar | Fireplace | Garden | Gym / Fitness Area | Internet Access |
Jacuzzi | Laundry | Library | Massages | Private Car Park |
Restaurant | Sauna | Shop | Solarium | SPA | Steam / Turkish
Bath | Swimming Pool | Tennis Court



POUSADA CONVENTO DA GRAÇA

A CENTURIES OLD CONVENT IN A CITY INHERITED FROM ANCIENT CIVILISATIONS.

The Pousada Convento da Graça is located in Southern Portugal, in the historical centre of Tavira, a typical city in the Algarve with an inheritance of ancient civilizations. It was a Phoenician colony, populated by Romans and also an important city during the Arab occupation.

This building was the Santo Agostinho Hermits Convent founded by D. Sebastião around 1569. Recently transformed into a hotel, it was refurbished in a way that benefits from its heritage and ancient architecture.

The facade onto the main square and the noble Baroque inspired staircase, the Renaissance cloister from the 16th and 17th century, as well as the Arab archaeological remains discovered during the refurbishment all stand out.

The rooms are varied and comfortable. The common areas are welcoming and offer everything needed to enjoy a few days away, to celebrate a special occasion at a banquet or to organize a corporate event.

The city of Tavira, its 37 churches and Moorish castle invite a more in depth view, as well as the neighbouring Ria Formosa natural park with its never ending beaches.



PORTUGAL - TAVIRA

ADDRESS:
Rua Dom Paio Peres Correia
8800-407 Tavira
Portugal

GPS: 37° 07' 25.63" N | 07° 39' 08.55" W

Website: <http://pousadaconventodagraca.arteh-hotels.com>

FACILITIES

Rooms: 31 | Suites: 5

Bar | Chapel | Children's Pool | Event Space(s) | Fireplace |
Garden | Internet Access | Laundry | Private Car Park |
Restaurant | Swimming Pool | TV Lounge



POUSADA PALÁCIO DE ESTOI

FEEL THE HISTORY AND DESIGN IN THE TRANQUIL ALGARVE.



The typical Algarve houses and the flowered streets of Estoi village, situated a few kilometers from Faro, lead us to the Pousada Palácio de Estoi that was projected for a superb century building of Rococo architecture.

The construction of the palace began in the late 19th century and finished with the celebration of a grand party in the gardens in 1909. It remained in the family of the Viscount of Estoi, and in the late 20th century was bought by the state that approved its transformation into a hotel.

Today, this hotel is composed by the recovered main building, with its exuberant salons, frescoes, tea pavilions, fantastic Versailles style gardens and former stables and cow sheds, now converted into spaces for holding all sorts of events.

In contrast with this historical surrounding, a new modern wing was built to receive the rooms, with design and furniture in contemporary style, and with windows that open onto a tranquil countryside or pool view.

Take advantage of your stay to feel the difference of the tranquility of Algarve's interior, discover the history of the Milreu Roman ruins and the neighbouring cities of Faro and Tavira, without missing the famous golf courses and extensive golden sand beaches.

PORTUGAL - FARO - ESTOI

ADDRESS:

Rua São José - Estoi
8005-465 Faro
Portugal

GPS: 37° 05' 48.40" N | 07° 53' 42.87" W

Website: <http://pousadapalaciodeestoi.arteh-hotels.com>

FACILITIES

Rooms: 60 | Suites: 3

Bar | Chapel | Children's Pool | Event Space(s) | Garden | Gym / Fitness Area | Health Club | Internet Access | Laundry | Private Car Park | Restaurant | Sauna | Steam / Turkish Bath | Swimming Pool (Indoor, Outdoor)



MONTE DO CASAL

A PRIVATE GARDEN WITH A VIEW OF THE SEA.

The hotel Monte do Casal is nestled in an area of quiet countryside in the Algarve, quite close to the historical village of Estoi, just a few kilometres from Faro International Airport.

This hotel with customised service was born from an attractive 18th century country house, recently refurbished, removed from the hectic bustle of the Algarve's main cities and protected by lovely gardens with palm trees and bougainvilleas.

The interior spaces are comfortable and elegant, in the rooms the small private terraces where breakfast can be served and their views that extend from the garden into the sea are worthy of special mention.

At the award winning restaurant contemporary French inspired cuisine with local and oriental influences can be savoured, and on some evenings live music is the perfect accompaniment.

Relaxed or busy days can be spent, the choice is entirely yours. Enjoy the sun by the swimming pools or practice on the hotel's putting green. Explore the endless beaches of the coast or the famous Algarve golf courses. Find either the tranquil or the lively Algarve knowing that at the Monte do Casal you will be well received.



PORTUGAL - FARO - ESTOI

ADDRESS:

Cerro do Lobo - Estoi
8005-436 Faro
Portugal

GPS: 37° 05' 01.88"N | 07° 51' 59.79"W

Website: <http://montedocasal.arteh-hotels.com>

FACILITIES

Rooms: 10 | Suites: 8

Bar | Croquet Field | Event Space(s) | Fireplace | Garden | Gym
/ Fitness Area | Internet Access | Jacuzzi | Laundry | Library |
Massages | Private Car Park | Putting Green | Restaurant |
Sauna | SPA | Steam / Turkish Bath | Swimming Pool



POUSADA INFANTE

SET OUT TO DISCOVER AN UNFORGETTABLE SENSORY EXPERIENCE.



The Pousada Infante is framed into a landscape of wilderness, a stone's throw away from the Atlantic where one finds the picturesque village of Sagres in the Algarve. From here 500 years ago Prince Henry sent out Portuguese sailors in search of new worlds for the Portuguese Crown.

The proximity to the open sea and to the waves which pound the characteristic steep cliffs of this coast and become lost in the horizon, guarantees the enthusiasm this location commands.

The view is superb and in the distance one can glimpse Cape São Vicente, the most Southwestern point in Europe, where the Fortress of Sagres is found and can be visited.

The hotel is placed in an ideal way to hear and watch the sea gently entering into the rooms, a sensation that leaves no one indifferent. The restaurant also offers a unique experience to the palate, so one shouldn't hesitate to try the already famous fresh fish and seafood dishes.

Begin the day with a dip into the fantastic salt water swimming pool. Later, feel the sand on the deserted beaches washed by the strong sea or the more agitated beaches lapped by a calm sea. At last, after a complete day, return to the hotel, relax on the terrace and inhale the sea breeze.



PORTUGAL - SAGRÉS

ADDRESS:
Pousada do Infante
8650-385 Sagres
Portugal

GPS: 37° 00' 23.72" N | 08° 55' 59.65" W

Website: <http://pousadainfante.arteh-hotels.com>

FACILITIES

Rooms: 50 | Suites: 1

Bar | Event Space(s) | Fireplace | Garden | Internet Access |
Laundry | Private Car Park | Restaurant | Swimming Pool |
Tennis Court | TV Lounge

MEMMO BALEEIRA

ORIGINALITY, HOSPITALITY AND MEMORIES FOR THE SENSES.

The attractive Memmo Baleeira was born in Sagres, in the Southwestern Algarve, as a result of the renovation of the former Hotel da Baleeira. The colour white and the original lines from the 60s were kept, making the most of the superb view over the ocean, the exterior spaces and the natural light.

Inside the sphere is taken as a design motif, appearing on ceilings, sofas, carpets and lights. The furniture is diverse and unique, including the chairs designed by Tom Vac and the lamps by Philippe Starck, dispersed among the retro chairs and other pieces from the previous hotel.

The decor hinges on white and brown hues and on a water-coloured blue to create tranquil contemporary spaces, at times minimalist, but always elegant and comfortable.

The hotel offers rooms with sunny balconies magnificently facing the sea, a restaurant with refined cuisine using local produce, several sitting and leisure areas, a fully fitted SPA and a conference and event centre.

One must visit the Fortress and the imposing Cape São Vicente, as well as the numerous beaches that dot the coast with either vast sandy beaches or steep cliffs. The Memmo Baleeira is an open door onto Sagres and all the cultural and natural heritage of this region.



PORTUGAL - SAGRÉS

ADDRESS:
Sítio da Baleeira
8650-357 Sagres
Portugal

GPS: 37° 00' 38.03" N | 08° 55' 55.13" W

Website: <http://memmobaleeira.arteh-hotels.com>

FACILITIES

Rooms: 105 | Suites: 6

Bar | Event Space(s) | Fireplace | Games Room | Garden | Gym /
Fitness Area | Internet Access | Laundry | Library | Massages |
Private Car Park | Restaurant | Sauna | Shop | Solarium | SPA |
Steam / Turkish Bath | Swimming Pool (Indoor, Outdoor) |
TV Lounge



QUINTA DAS MERCÊS

TAKE SHELTER IN THIS NATURAL RESERVE AND ENJOY BEING IN HARMONY WITH NATURE.



The Quinta das Mercês is situated on Terceira island in the Azores archipelago, nestled in the Brazil mountain natural reserve, between the ocean, gardens and a dense area of Atlantic forest.

Built in the 18th century, in keeping with typical manor architecture, the farm's large manor house is today, after undergoing an ambitious renewal and refurbishment project, a charming hotel.

In its interior the common areas and the rooms are wide and comfortable, decorated in a markedly classical style. Some of the rooms offer a small private garden and others a tranquil sea view.

The external leisure areas, the result of carefully designed landscape architecture, are harmoniously implanted into the Quinta's surrounding gardens whilst maintaining the original structure of the land.

Several sports are at your disposal. Enjoy cycling, play tennis matches or train your putting before heading out to the island's golf course. The privileged connection to the sea also allows the possibility of canoeing and fishing, or even to venture into diving and spearfishing in the midst of the Atlantic Ocean.

Whilst staying at Quinta das Mercês be sure to visit Angra do Heroísmo, a World Heritage site.

PORTUGAL - AZORES - TERCEIRA - - ANGRA DO HEROÍSMO

ADDRESS:

Caminho de Baixo - São Mateus
9700-559 Angra do Heroísmo
Terceira - Azores
Portugal

GPS: 38° 39' 26.54" N | 27° 15' 09.11" W

Website: <http://quintadasmerces.arteh-hotels.com>

FACILITIES

Rooms: 11 | Suites: 1

Bar | Chapel | Event Space(s) | Games Room | Garden | Gym
/ Fitness Area | Internet Access | Jacuzzi | Laundry | Library |
Private Car Park | Putting Green | Restaurant (upon request) |
Steam / Turkish Bath | Swimming Pool | Tennis Court



POUSADA SÃO SEBASTIÃO

CLIMB THE WALL OF THE FORT TO DEFEND YOUR VACATION.

The Pousada São Sebastião, located in the city of Angra do Heroísmo on the Azores's Terceira island, is superbly positioned over the sea on Porto de Pipas.

The fort that houses this hotel became known as "Castelinho" (tiny castle) and was built by order of D. Sebastião, King of Portugal, in the middle of the 16th century.

The refurbishment work allowed its transformation into a current hotel with contemporary design features. Its interior now boasts light and modern buildings, their bold design contrasting with the dark and ancient walls protecting them.

Its exposure is perfect, allowing the rooms to enjoy the intense luminosity of an exceptional sea view. This view can also be enjoyed from the restaurant and the terrace accompanied by a delectable dish of Atlantic fish.

A cultural trip into Angra do Heroísmo, a World Heritage site, is recommended as well as a boat ride along the island's coast, or even testing your chances with the sport fishing or experimenting diving into the surrounding Atlantic Ocean.



PORTUGAL - AZORES - TERCEIRA - - ANGRA DO HEROÍSMO

ADDRESS:

Rua do Castelinho, s/n
9700-045 Angra do Heroísmo
Terceira - Azores
Portugal

GPS: 38° 39' 08.14" N | 27° 12' 43.11" W

Website: <http://pousadasaosebastiao.arteh-hotels.com>

FACILITIES

Rooms: 28 | Suites: 1

Bar | Children's Pool | Event Space(s) | Garden |
Internet Access | Laundry | Private Car Park | Restaurant |
Swimming Pool | TV Lounge



CONVENTO DE SÃO FRANCISCO

AFTER WHALE WATCHING, RETIRE TO THE CONVENT AND FALL ASLEEP ON A SUMPTUOUS BED.



In the South of the São Miguel island in the Azores Archipelago, is the Convento de São Francisco framed by the invigorating landscape of the Vila Franca do Campo Isle natural reserve and the sea on the horizon.

The 16th century convent was renovated and refurbished with sophistication and transformed into an elegant and beautifully austere hotel. The floor covered in exotic wood, the volcanic rock in the restrooms and the wrought iron pieces and period furniture are features that particularly stand out.

The decor of each room, baroque inspired, was designed individually, with the gold leaf wood, the rich fabrics, the fireplaces and both religious and contemporary art as the main focal points.

A short distance from the convent, the marina and small harbour of Vila Franca do Campo are the ideal setting off point for whale watching trips, for fishing, swimming and diving in the sea or in the isle's natural pool.

Enjoy the beach, a round of golf and long walks exploring the inviting mountain trails through amazingly green landscapes. Be sure to visit the lagoons of Fire and of the Seven Cities, one of São Miguel island's main attractions.

PORTUGAL - AZORES - SÃO MIGUEL -
- VILA FRANCA DO CAMPO



ADDRESS:

Jardim António Silva Cabral
9680-107 Vila Franca do Campo
São Miguel - Azores
Portugal

GPS: 37° 42' 58.74" N | 25° 26' 29.87" W

Website: <http://conventodesaofrancisco.arteh-hotels.com>

FACILITIES

Rooms: 10

Bar | Event Space(s) | Garden | Internet Access (Reception) |
Private Car Park | Squash Court | Swimming Pool

HOTEL DO COLÉGIO

WANDER THROUGH CLASSROOMS, EXPLORE THE ANCIENT CONSERVATORY AND DIVE INTO THE OLD PLAYGROUND.

The Hotel do Colégio, located in the centre of Ponta Delgada on São Miguel island, emerged from the adaptation of a 19th century urban edifice. In its history this building was a respected school and most recently served as the musical academy of the Regional Conservatory.

This building is classified as architecturally and culturally valuable due to its architecture and the design of its details, strongly influenced by the typical masonry and local basalt work, prevalent in the ornamentation of the main doors, the windows, the staircase, the arches and the stone slab flooring.

With its heritage and its cultural and artistic tradition intact, this hotel has been divided into two wings: the Conservatory and the School, each in keeping with its past.

In the conservatory wing a collection of photographs from its days as a music academy can be enjoyed and each room is named after traditional music from the Azores. In the school wing, the uniforms, books and diverse school memorabilia belonging to former students is on show.

Properly settled into São Miguel island, be sure to take advantage of all it has to offer, from whale watching trips and the famous cuisine to the luxuriant landscape.



PORTUGAL - AZORES - SÃO MIGUEL - - PONTA DELGADA

ADDRESS:

Rua Carvalho Araújo, 39
9500-040 Ponta Delgada
São Miguel - Azores
Portugal

GPS: 37° 44' 31.69"N | 25° 40' 10.01"W

Website: <http://hoteldocolégio.arteh-hotels.com>

FACILITIES

Rooms: 53 | Suites: 2

Bar | Event Space(s) | Garage | Gym / Fitness Area | Internet
Access | Laundry | Restaurant | Sauna | Swimming Pool |
TV Lounge



HOTEL PORTO SANTO & SPA

NEVER-ENDING BEACH, UNALTERED NATURE, PRESERVED TRADITIONS AND TRANQUIL ATMOSPHERE.



Imagine an island far away from everything, a nature sanctuary in the middle of the Atlantic Ocean with a never-ending beach of fine white sand. Imagine a hotel protected by palm tree gardens, on that same beach. Welcome to the Hotel Porto Santo & SPA.

The hotel was recently renewed by a team of architects that decided to keep the lines of the original building and create spaces with comfortable and simple charm. The room furniture was restored, some exclusive pieces were introduced, the spacious villas were created and an exceptional SPA was born.

In the SPA, the modern style, an interior garden, the heated swimming pool, various infrastructures for massages, relaxation and treatments, stand out. Profiting from the unique and proven characteristics of the beach sand, the hot sand therapy is emphasized for improving countless physical conditions and for general well-being.

A restaurant and a bar with a large terrace, as well as a snack-bar next to the beach, are the spaces for your meals. The flavours and the fragrances are regional, along with international cuisine dishes.

Come and discover this heaven in the middle of the sea, with mild temperatures, unaltered nature, preserved traditions and tranquil atmosphere. Lose yourself in your books, sunbathing and long walks, or vibrate with the water and adventure sports that the Porto Santo island offers you.

PORTUGAL - MADEIRA - - PORTO SANTO

ADDRESS:
Campo de Baixo
9400-015 Porto Santo
Madeira
Portugal

GPS: 33° 03' 04.11" N | 16° 20' 53.85" W

Website: <http://hotelportosantospa.arteh-hotels.com>

FACILITIES

Rooms: 94 | Villas: 5

Bar | Event Space(s) | Garden | Internet Access | Jacuzzi |
Laundry | Massages | Minigolf Course | Private Car Park |
Restaurant | Solarium | SPA | Steam / Turkish Bath |
Swimming Pool (Indoor, Outdoor) | Tennis Court



ESTALAGEM DA PONTA DO SOL

FLOAT IN A POOL OVER THE SEA AND LOSE YOURSELF TO THE BREATHTAKING VIEW.

Situated atop the cliff of the typical village of Ponta do Sol, in the South of the island of Madeira, the Estalagem da Ponta do Sol is an oasis, fruit of the harmony between nature and intelligent architecture.

The origin of the Estalagem lies in the renovation of an ancient manor farm located on that spot, where the integration of a contemporary and distinct concept with the original buildings and the surrounding natural scenery was admirably achieved.

The straight lines in the structures, the simplicity of the decor and the modern design pieces create a relaxing and seductive ambiance certain to cause pleasant surprise.

The magnificent views provide a complete immersion into the landscape. At the panoramic restaurant one can enjoy the sea, the village or the banana plantations on the slopes of the hills. From the rooms' glass windows the ocean seems just a dive away and at the pool the water blends invisibly into the horizon.

Enjoy Madeira's better climate, visit the sunny village of Ponta do Sol, attempt surf and snorkelling at the various beaches and be sure to walk through "veredas" and "levadas", while taking in the contrasts between the rock lined coast and the luxuriant landscape.



PORTUGAL - MADEIRA - PONTA DO SOL

ADDRESS:

Quinta da Rochinha
9360-121 Ponta do Sol
Madeira
Portugal

GPS: 32° 40' 45.54"N | 17° 06' 10.27"W

Website: <http://estalagemdapontadosol.arteh-hotels.com>

FACILITIES

Rooms: 54

Bar | Games Room | Garden | Gym / Fitness Area | Internet
Access | Jacuzzi | Laundry | Private Car Park | Restaurant |
Sauna | SPA | Steam / Turkish Bath | Swimming Pool
(Indoor, Outdoor) | TV Lounge



CHOUPANA HILLS RESORT SPA

WHILE RELAXING IN YOUR JACUZZI, BREATHE IN THE PURENESS OF THE AIR FROM THE MOUNTAIN TOP.



Overlooking the town of Funchal, atop a hill and in the middle of a subtropical garden emerges the luxurious Choupana Hills Resort & SPA, with nature as its inspiration, a mixture of styles that characterises it and the attentive service it offers all combined to perfection.

The contemporary and exotic rooms are located in spacious bungalows with a superb view over Funchal, the bay and the Atlantic Ocean. Peculiarly constructed on pillars using wood and stone, especially the basalt typical to the region, these bungalows have the same touch of exoticism that exudes from the entire hotel.

The interior design, a cosy and simple style, is harmoniously complemented by varied works of art, from sculptures and "contadores", to mirrors and 15th century paintings denoting African and Asian cultural influences as a tribute to the Portuguese Age of Discovery.

The mixture of influences is equally well reflected in the exciting fusion cuisine which combines the ingredients and culinary traditions of different cultures, thus offering a wide diversity of new flavours not to be missed.

Experiment the innovative relaxation methods, the massages and varied SPA treatment programs, and grasp at the chance of revitalizing the body, refreshing the mind and awakening the senses.

PORTUGAL - MADEIRA - FUNCHAL

ADDRESS:

Travessa do Largo da Choupana
9060-348 Funchal
Madeira
Portugal

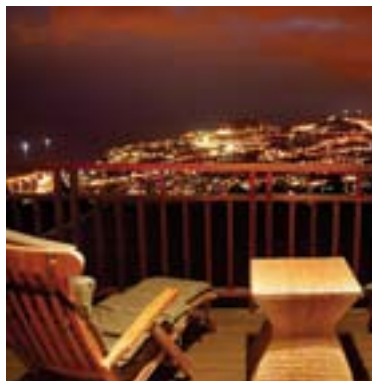
GPS: 32° 40' 15.24"N | 16° 53' 16.44"W

Website: <http://choupanahillsresortspa.arteh-hotels.com>

FACILITIES

Rooms: 57 | Suites: 4

Bar | Event Space(s) | Garden | Gym / Fitness Area | Internet
Access | Jacuzzi | Laundry | Library | Massages |
Private Car Park | Restaurant | Sauna | SPA | Steam / Turkish
Bath | Swimming Pool (Indoor, Outdoor)



THE VINE HOTEL

SOUL, INNOVATION AND LUXURY IN THE HEART OF THE ATLANTIC PEARL.

It was in the heart of the city of Funchal, in the marvelous island of Madeira, that The Vine was born, an intense hotel with a soul that surprises by its innovating and sophisticated style.

The building, idealized by Ricardo Bofill, shines with attractive modern lines. In its interior, conceived by Nini Andrade Silva, you will find elegant spaces with a bold design, varied materials and textures, captivating images and seductive light effects.

The rooms are distributed over four floors, each dedicated to a season of the year and the maturing phases of the vine. The Spring is represented by green, the Summer by purple, the Autumn by brown and the Winter by grey. In all the rooms, luxury and comfort rule.

In the relaxing environment of the The Vine SPA we invite the body to travel to another dimension, through Winetherapy treatments and the products based on the active components extracted from the vine, grape pips and vine leaves.

On the top of the hotel there is a magnificent panoramic pool, a bar and a gourmet restaurant run by Antoine Westermann, an international renowned chef. You may savour inventive and fusion dishes that exalt the authenticity of regional products, while you gaze from the hotel top onto the stars and the night of Funchal.



PORTUGAL - MADEIRA - FUNCHAL

ADDRESS:

Rua dos Aranhas, 27 - A
9000-044 Funchal
Madeira
Portugal

GPS: 32° 38' 51.75" N | 16° 54' 47.87" W

Website: <http://thevinehotel.arteh-hotels.com>

FACILITIES

Rooms: 57 | Suites: 22

Bar | Event Space(s) | Garage | Internet Access | Jacuzzi |
Laundry | Massages | Restaurant | Solarium | SPA | Steam /
Turkish Bath | Swimming Pool (Indoor, Outdoor)



QUINTA DA CASA BRANCA

OPEN THE WINDOWS OF YOUR ROOM AND BECOME LOST IN THE COLOUR OF THE GARDENS.



Close to the Funchal city centre, lost amongst a vast and ancient Madeira farm, is the surprising Quinta da Casa Branca, the result of a bold and prized architectural project.

Its design coincides in perfect harmony with the surrounding beauty thus creating a feel of tranquillity that takes full advantage of the colourful view over the unending exotic gardens in which the hotel is set. The interior design, luxurious and comfortable, is an effective combination of both modern and classical styles.

The sitting areas are great to relax and unwind in, the small library is the perfect place to uncover some holiday reading while at the health club, modern and completely equipped, there are the best treatments for body and mind.

The central location is the ideal starting point for exploring the lively city of Funchal and for attempting one of the diverse daily sports and leisure programmes recommended by the Quinta, a perfect complement to any stay.

The unequalled quality of Quinta da Casa Branca and its attentive, personalised and exclusive service are sure to impress.

PORTUGAL - MADEIRA - FUNCHAL

ADDRESS:

Rua da Casa Branca, 7
9000-088 Funchal
Madeira
Portugal

GPS: 32° 38' 29.62" N | 16° 55' 38.79" W

Website: <http://quintadacasabranca.arteh-hotels.com>

FACILITIES

Rooms: 41 | Suites: 2

Bar | Games Room | Garden | Gym / Fitness Area | Health Club |
Internet Access | Jacuzzi | Laundry | Library | Massages |
Private Car Park | Restaurant | Sauna | Steam / Turkish Bath |
Swimming Pool | TV Lounge



QUINTA DA BELA VISTA

IN THE MIDST OF NATURE DISCOVER A TRADITION OF EXCELLENT HOSPITALITY.

Inaugurated as a five-star hotel in 1989, the sunny Quinta da Bela Vista is surrounded by the magnificent landscape of the island of Madeira and benefits from mild weather throughout the four seasons of the year.

Dating from 1844, this Madeira Quinta is proud to have been the first to have been converted into a hotel and still belongs to its original family.

Engaged in the traditions of the past and preserving the art of good hospitality above all, the hotel lives up to its name by existing on two acres of exotic and luxuriant gardens made up of plant species from the four corners of the world, that inspire moments of pleasure and communion with nature.

Every space is an inhalation of history, tradition and good taste. Contemplate the pieces of a priceless private antique collection that spans three centuries of European culture. Each suite highlights unique pieces of furniture and decorative objects of great beauty.

As outdoor activities, alongside exploring the charming island, enjoy a leisurely ride on Gavião, the Quinta's yacht, and take advantage of the special conditions on offer to try the fabulous golf courses.



PORTUGAL - MADEIRA - FUNCHAL

ADDRESS:

Caminho do Avista Navios, 4
9000-129 Funchal
Madeira
Portugal

GPS: 32° 38' 50.89"N | 16° 56' 05.72"W

Website: <http://quintadabelavista.arteh-hotels.com>

FACILITIES

Rooms: 82 | Suites: 7

Bar | Event Space(s) | Fireplace | Games Room | Garden |
Internet Access | Jacuzzi | Laundry | Library | Private Car Park |
Restaurant | Sauna | Swimming Pool | Tennis Court



THE MUST HOTELS



BY ARTEH®

SOUTH AFRICA



WWW.ARTEH-HOTELS.COM

CAPE GRACE

A DESTINATION OF SINCERE HOSPITALITY AND INNATE CHARM.



Situated by the sea on a private dock in the Cape Town marina, the Cape Grace hotel is just in itself a charmed destination. The intimacy of the atmosphere and the sincere hospitality of the hosts will define your stay and guarantee you feel at home.

It's an attractive building with a classical style presenting an elegant interior design which respects the hotel's identity and that captures the Cape essence. In all the spaces you feel and live the charm of the history and beauty of the region.

In the generous rooms and spacious suites you'll find a distinct design, quality materials, exclusive furniture and luxurious fabrics that create a special and unique ambiance. All guestrooms offer views onto the busy port, lively marina or the impressive Mesa mountain.

In the popular Bascule bar, savour a cappuccino and a wide variety of whiskies or wines from the Cape. At the sophisticated Signal restaurant, try flavours influenced by the various cultures that have passed through the region throughout history. At the African-inspired SPA, feed your soul with treatments aimed at rejuvenating the body.

Cape Town is cosmopolitan and colourful with everything to enrich your stay, from the varied cultural and leisure experiences to its cuisine. Choose Cape Grace as your haven in this vibrant city.



SOUTH AFRICA - CAPE TOWN

ADDRESS:

West Quay Road - Victoria and Alfred Waterfront
8002 Cape Town
South Africa

GPS: 33° 54' 28.93" S | 18° 25' 12.12" E

Website: <http://capegrace.arteh-hotels.com>

FACILITIES

Rooms: 109 | Suites: 13

Bar | Chapel | Event Space(s) | Fireplace | Garage | Gym / Fitness Area | Internet Access | Jacuzzi | Laundry | Library | Massages | Private Car Park | Restaurant | Sauna | Shop | SPA | Swimming Pool

PEZULA RESORT HOTEL & SPA

A NATURAL SANCTUARY AND A LUXURY RETREAT.

Hidden away in a natural paradise of over 1,000 hectares in Knysna, on South Africa's exquisite Garden Route, is the Pezula Resort Hotel & SPA, a luxury retreat designed to maximize the contact with its surroundings and created in perfect harmony with nature.

In the contemporary African style suites, the warmth of the textures of the wood and stone can be felt. These earth tones and warm colours contrast with the greens and blues that dominate the landscape. From the balconies, we see either Knysna lagoon, the golf course or the Indian Ocean.

The SPA also reflects the soul of Africa in its natural elements and textures, as well as in its products based on extracts of indigenous plants and flowers. Its state of the art equipment and professionals guarantee an experience of pure well-being.

At Zachary's, the restaurant, in an intimate and elegant atmosphere, we order from an ethnic and modern menu. The ingredients, from the vegetable and herb garden, become unique dishes of local inspiration, while from the private wine cellar South African and international wines have been selected to accompany them.

During the day we can play golf or tennis, enjoy horseback riding, canoeing or sunbathe on the secluded Noetzie beach, visit the Sinclair nature reserve and discover the natural fauna and flora that surround us.



SOUTH AFRICA - KNYSNA

ADDRESS:

Lagoonview Drive, PO Box 3327
6570 Knysna
South Africa

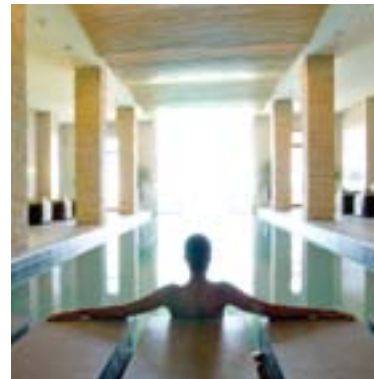
GPS: 34° 04' 12.27" S | 23° 05' 19.48" E

Website: <http://pezularesorthotelspa.arteh-hotels.com>

FACILITIES

Suites: 78

Bar | Croquet Field | Driving Range | Event Space(s) | Fireplace
| Games Room | Garden | Golf Course | Grill | Gym / Fitness
Area | Helipoint | Internet Access | Jacuzzi | Laundry | Library |
Massages | Private Car Park | Putting Green | Restaurant |
Sauna | Shop | Solarium | SPA | Steam / Turkish Bath | Swimming
Pool (Indoor, Outdoor) | Tennis Court



THE MUST HOTELS



BY ARTEH®

SPAIN



WWW.ARTEH-HOTELS.COM

LA PLETA

A WELCOMING MOUNTAIN RETREAT FOR ALL SEASONS.



The La Pleta is a welcoming and exclusive five stars hotel situated in Baqueira Beret, a picturesque and seductive ski resort in the Aran Valley, in the Spanish Pyrenees of the Catalonia region.

The infrastructures, rooms and environment were created with your comfort and well-being in mind, with a decoration that combines the rusticity of wood and stone with the elegance of contemporary furniture. The hotel team, dedicated and considerate, will do everything to guarantee a perfect stay.

The hotel offers you the possibility of having several gastronomic experiences, from the Oriental flavours of the Zen style sushi restaurant to the Catalan gourmet cuisine of the Del Gel al Foc restaurant, and including the appetizers served on the terrace of the Café y Veranda.

In the Occitania SPA, candle lights will guide you on a sensory journey bound for the serene equilibrium of the body and mind. Uncover in this chic atmosphere a range of spaces, therapies and treatments that use the essences of the flowers and fruits of the mountain that surrounds us.

The forests, rivers, lakes and old villages of the valley and of the Pyrenees invite you for countless activities in an always colourful Summer or in a snow-white Winter. La Pleta invites you to uncover the mysteries of the mountain in all the seasons.

SPAIN - BAQUEIRA

ADDRESS:

Ctra. Baqueira a Beret - Cota 1.700, s/n
25598 Baqueira
Spain

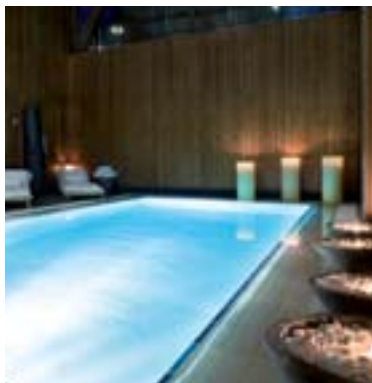
GPS: 42° 42' 10.73" N | 00° 56' 06.49" E

Website: <http://lapleta.arteh-hotels.com>

FACILITIES

Rooms: 50 | Suites: 18

Bar | Children's Pool | Fireplace | Games Room | Garage | Gym
/ Fitness Area | Internet Access | Jacuzzi | Laundry | Library |
Massages | Private Car Park | Restaurant | Sauna | SPA | Steam |
Turkish Bath | Swimming Pool (Indoor) | TV Lounge



HOSPES VILLA PAULITA

ADMIRE THE REFLECTION OF THE TREES AND THE MOUNTAINS MIRRORED IN THE LAKE.

The town of Puigcerdà sits on a plateau in the sunny valley of Cerdanya in the Spanish Pyrenees, neighbouring France. This scenery of refreshing mountains, snow, woods and the tranquil lake of the city frames the Villa Paulita mansion.

Originally a private vacation home, the Villa Paulita is now an enchanting hotel that resulted from a project intent on preserving the spirit of the place, bringing together the antique and new, and recovering its eclectic French style architecture.

The old building is almost symmetrical with a prominent watchtower. On the ground floor there is the reception and a comfortable sitting room with a fireplace. The rooms incorporated into the next two floors are adapted to the diverse styles of the building's structure.

On the other side of the garden, and in the former stables area, an annex of rooms in keeping with the character of the rural buildings emerged. The rooms at ground level have small private patios and those on the upper floors have ample windows that invite the landscape inside.

At the restaurant, an avant-garde menu with traditional flavours and regional products can be appreciated while being in awe of the panoramic view on the lake. At the SPA, you should not miss the interior pool, the fitness areas or the treatments and massages to recharge your batteries in refinement.



SPAIN - PUIGCERDÀ

ADDRESS:

Avinguda Pons i Gash, 15
17520 Puigcerdá
Spain

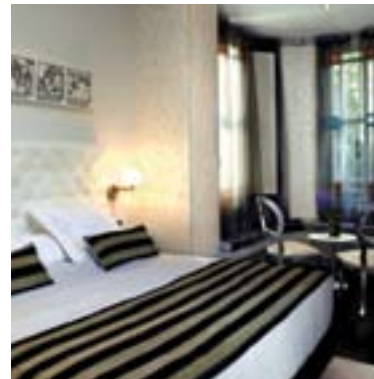
GPS: 42° 26' 04.86" N | 01° 55' 38.99" E

Website: <http://villapaulita.arteh-hotels.com>

FACILITIES

Rooms: 38 | Suites: 2

Bar | Event Space(s) | Fireplace | Garage | Garden | Gym /
Fitness Area | Internet Access | Jacuzzi | Laundry | Massages |
Pets Allowed | Restaurant | Sauna | SPA | Steam / Turkish Bath |
Swimming Pool (Indoor)



POSADA CASA DEL ABAD

ART, TRADITION AND MODERNITY IN A MEDIEVAL VILLAGE.



The Posada Casa del Abad was born in a refurbished 17th century building that stands out in the main square of Ampudia, a beautiful historical Medieval village situated close to Palencia in the Castile and Leon region in Spain.

Originally the residence of the abbot of San Miguel Abbey, this building was converted into a hotel by Ángel García Puertas, one of the proprietors and a talented architect. He has kept most of the original structures and used building materials that are typical in the region to maintain the traditional and picturesque mood of the house and the rooms, which were superbly complemented with antique furniture, contemporary design details and modern equipment.

El Arambol, the restaurant awarded a Michelin star, is a perfect example of this fusion of the past and the present that is experienced in the hotel. It is a warm and welcoming space created in the former wine cellar which serves traditional dishes brilliantly reinvented by the chef Joaquin Koerper.

At the hotel, you can find ideal patios to relax in, as well as a small library and rooms completely equipped for meetings or banquets. There is also a swimming pool, gym and a SPA that offers rejuvenating bathing, massages and therapeutic experiences.

During the day, cycle through the ancient streets of the village, follow along the ruins of the wall and continue underneath the arcades of the houses until you arrive at the castle. Once there admire the vast and varied collection of art belonging to Eugenio Fontaneda, patron of the arts.

SPAIN - PALENCIA - AMPUDIA

ADDRESS:

Plaza Francisco Martín Gromaz, 12
34160 Ampudia - Palencia
Spain

GPS: 41° 54' 48.93" N | 04° 46' 49.26" W

Website: <http://posadacasadelabad.arteh-hotels.com>

FACILITIES

Rooms: 10 | Suites: 15

Bar | Chapel | Event Space(s) | Garden | Gym / Fitness Area |
Internet Access | Jacuzzi | Laundry | Library | Massages |
Paddle Court | Pets Allowed | Restaurant | Sauna | Solarium |
SPA | Steam / Turkish Bath | Swimming Pool (Indoor, Outdoor) |
Tennis Court | TV Lounge



CAN BONASTRE WINE RESORT

WINEMAKING CULTURE AND TRADITION WITH AN AVANT-GARDE INSPIRATION.

The Can Bonastre Wine Resort is situated in Masquefa, at only 35 minutes from Barcelona, in a 100 hectare estate of forests and vineyards that extends to the base of the Montserrat mountains. This is a boutique hotel dedicated to gastronomic and wine tourism, where well-being is assured and wine is the highlight.

The main building is a typical manor from the 16th century that was restored respecting its traditional architecture and original values. The common spaces and rooms now benefit from a modern and avant-garde image, with a sober elegance.

Can Bonastre offers two restaurants for your choice. In Food & Cups you may appreciate the landscape and typical food in an ideal space for company meetings and get-togethers with friends. In Tribia, the essence is the Mediterranean cuisine based on local products, selected and prepared with the creative and gourmet touch of the chef Víctor Gómez.

The Acbua SPA was created for the wellness, relaxation and health of the guests and it offers an exceptional view of the mountains, as well as therapies conceived to take advantage of wine properties.

Can Bonastre suggests museum and market visits, wine routes in the region of Anoia and Alt Penedés, invites you to cookery courses and to discover its own wine production. Toast with the real gems of flavour and originality that you will find in the guided visits to the cellar and in the wine tastings.



SPAIN - BARCELONA - MASQUEFA

ADDRESS:

Finca Can Bonastre - Santa Magdalena Road, 224 B - Km 13,2
08783 Masquefa - Barcelona
Spain

GPS: 41° 30' 29.87" N | 01° 47' 12.07" E

Website: <http://canbonastrewineresort.arteh-hotels.com>

FACILITIES

Rooms: 10 | Suites: 2

Bar | Event Space(s) | Fireplace | Games Room | Garden |
Internet Access | Jacuzzi | Laundry | Library | Massages | Private
Car Park | Restaurant | Sauna | Solarium | SPA | Steam / Turkish
Bath | Swimming Pool (Indoor, Outdoor)



ÀBAC RESTAURANT & HOTEL

A UNIQUE EXPERIENCE OF LEISURE, WELL-BEING AND GASTRONOMY.



The ÀBAC Restaurant & Hotel is situated in higher Barcelona at the beginning of the Avenida Tibidabo, one of the most emblematic city avenues, surrounded by the vegetation of the La Tamarita gardens and with a view of Kennedy Plaza.

This hotel is born from a project for integrating two neighbouring buildings: the old and centennial United States consulate and another with a contemporary design by architect Antoni de Moragas.

The environment's elegance results from the white and cream tones used in all spaces, exclusive furniture and quality fabrics, while the intelligent lighting confers it a special intimacy. The rooms are spacious and luxuriously equipped, with big windows overlooking the garden and some of them with magnificent terraces.

The ÀBAC SPA was installed in a reserved area illuminated by skylights that, with its tiles and the far end wall in natural stone, reminds us of ancient Roman baths. The list of treatments is complete, with the necessary stimulation or relaxation therapies.

We recommend the restaurant, awarded with two Michelin stars, that receives us with an innovative and exceptional menu. You also have the unique opportunity to visit the magnificent kitchen, installed in the building's old theatre, to see the chef and his team in action.

To continue experiencing the best of Barcelona, the hotel can provide a vehicle with a chauffeur and a guide to accompany you to the best city shops, organize tours through the Gothic Quarter or through the Modernist Gaudí route and much more to guarantee a perfect experience.

SPAIN - BARCELONA

ADDRESS:

Avenida Tibidabo, 1
08022 Barcelona
Spain

GPS: 41° 24' 38.19" N | 02° 08' 12.04" E

Website: <http://abacrestauranthotel.arteh-hotels.com>

FACILITIES

Rooms: 10 | Suites: 7

Bar | Event Space(s) | Games Room | Garage | Garden | Internet Access | Jacuzzi | Laundry | Library | Messages | Private Car Park | Restaurant | SPA | Steam / Turkish Bath | Swimming Pool (Indoor)



HOTEL CRAM

FEEL AND SHARE THE EMOTIONS OF A BARCELONA IN EVOLUTION.

The Hotel Cram, next to Casa Battló and La Pedrera, and just a few minutes away from the cosmopolitan Las Ramblas, is an innovative boutique hotel that stands out in the centre of Barcelona. The contrasts present in this hotel give rise to awakened emotions.

The building presents a noble Modernist façade dating from 1892, starkly contrasting with the distinct character of the avant-garde interiors. Light and dark environments follow one after the other from the lobby to the rooms like the keys on a piano, curves are combined with straight lines, and a range of colours inspired by Tibetan monks is merged.

From the dark halls, doors open onto luminous rooms offering a functional design. The interior design is modern, the materials and equipment of the utmost quality, and the lighting intelligently creates settings for several different moods.

The restaurant Gaig, established in 1869, found its new home at the Hotel Cram much to the guests delight. One of the most famous in the city, it was awarded a Michelin star thanks to the classical and modern dishes created by chef Charles Gaig who surprises us with the aesthetics, aromas and refined flavours of the dishes.

Drop by the seductive cocktail bar to relax and enjoy a drink before setting out for an adventure in town. Be sure to ask for suggestions about the best and most trendy places in Barcelona to the professional team at the reception.



SPAIN - BARCELONA

ADDRESS:
C/ Aribau, 54
08011 Barcelona
Spain

GPS: 41° 23' 17.42" N | 02° 09' 34.75" E

Website: <http://hotelcram.arteh-hotels.com>

FACILITIES

Rooms: 65 | Suites: 2

Bar | Garage | Internet Access | Laundry | Massages | Restaurant



NERI H&R

EXPERIENCE SENSUALITY AND AWAKEN ALL YOUR SENSES.



Right in the heart of Barcelona's Gothic quarter, by the Cathedral and Sant Jaume's Plaza, a renovated 18th century manor house in wood and stone stands out. Today it is the sensual hotel Neri.

The refurbishment project took into account most of the building's peculiar features, perfectly balancing historical charm with a completely contemporary style conceived to be enjoyed and to appeal to all the senses.

Sight, sound, smell, touch and taste are all essential to understanding the details and the niches of this hotel. Furthermore, all are indispensable to apprehending the philosophy inherent to Neri.

The different spaces provide glances of various tones and relaxing music is complemented by the fresh aroma of wild plants. All the various textures invite to be touched and the dishes, aromas and delicacies of the Mediterranean cuisine stimulate the palate.

The meeting room, the library and the relaxing solarium terrace, with a combination of the five elements of equilibrium inspired by the ideals of Feng Shui, all deserve to be highlighted. The rooms, comfortable and sensual, are equipped with modern comforts and amenities. Discover Barcelona and stay at the Neri, your stay will certainly be unique and unforgettable.



SPAIN - BARCELONA

ADDRESS:
C/ Sant Sever, 5
08002 Barcelona
Spain

GPS: 41° 22' 59.36" N | 02° 10' 31.57" E

Website: <http://neri.arteh-hotels.com>

FACILITIES

Rooms: 14 | Suites: 8

Bar | Event Space(s) | Internet Access | Laundry | Library |
Restaurant | Solarium

MAS PASSAMANER

FOLLOW AND ENJOY THE UNIQUE MODERNIST MOVEMENT.

In La Selva del Camp, close to Tarragona in the South of Catalonia, emerges the Mas Passamaner. A small yet surprising luxury hotel embedded in a 1920s mansion designed by the renowned architect, Domenech i Montaner.

The refurbishment project led by Ángel García Puertas, allowed the glamour and modernist spirit of the building to be recreated and contrasted it harmoniously with the contemporary style of other structures in the hotel grounds.

The rooms were named after famous Catalan architects as homage to the Modernist movement which served as inspiration for its personalised decor. Inside there are brief biographies and graphic material representative of their work. The royal suites stand out, dedicated to the genius of Montaner and Gaudi, they are spacious and benefit from a private pool.

Here you may find everything you need for your stay, be it one of work or leisure. A set of spaces equipped for all types of events, a superior quality restaurant and a SPA offering a wide range of health and beauty treatments, are amongst the many other infra-structures conceived for you.

In the hotel's surroundings there are also golf courses and the Golden Coast's beaches to explore. Become acquainted with the region through the gastronomic tours of the wine and olive oil estates or the tours about Roman monasteries or Modernism, without neglecting the cities of Tarragona and Barcelona.



SPAIN - TARRAGONA - - LA SELVA DEL CAMP

ADDRESS:

Camí de la Serra, 52
43470 La Selva del Camp - Tarragona
Spain

GPS: 41° 11' 10.89" N | 01° 09' 36.53" E

Website: <http://maspassamaner.arteh-hotels.com>

FACILITIES

Rooms: 19 | Suites: 7

Bar | Event Space(s) | Fireplace | Garden | Gym / Fitness Area |
Internet Access | Jacuzzi | Laundry | Library | Massages | Paddle
Court | Pets Allowed | Private Car Park | Restaurant | Sauna |
Solarium | SPA | Steam / Turkish Bath | Swimming Pool (Indoor,
Outdoor) | Tennis Court



HOSPES MADRID

RENOVATED ELEGANCE AND REVITALIZATION WITH STYLE.



The splendid hotel Hospes Madrid is located at Plaza de la Independencia, well in the historical centre of the Spanish capital, in a 19th century building of eclectic architecture characteristic of the Restoration period.

The building was designed by the architect José Maria de Aguilar in 1883 at the request of the Duchess and widow of General Prim. After years of careful renovation, the mansion that formerly existed as a private residence has now been adapted to the needs of a contemporary hotel, with excellent service and an exclusive appeal.

With modern design, the interiors of the hotel are comfortable, attractive and elegant, in a style that is present throughout the spaces and accompanies you into your room or suite.

At the Senzone restaurant be prepared to be surprised by an experience of unforgettable cuisine. Another experience that is sure to be surprising awaits you at the Bodyna SPA, a space with rooms for various types of massages and beauty treatments for your revitalization.

Just over there, very close-by, you can see the Retiro park and the Puerta de Alcalá and they extend an invitation for a walk and a visit. Also very close-by other places of interest deserve your attention such as the Puerta del Sol or the Prado and Thyssen Bornemisza museums. Enjoy the city in style by staying at the Hospes Madrid.

SPAIN - MADRID

ADDRESS:

Plaza de la Independencia, 3
28001 Madrid
Spain

GPS: 40° 25' 13.21"N | 03° 41' 20.38"W

Website: <http://hospesmadrid.arteh-hotels.com>

FACILITIES

Rooms: 33 | Suites: 2

Bar | Event Space(s) | Fireplace | Games Room | Gym / Fitness Area | Internet Access | Jacuzzi | Laundry | Library | Massages | Restaurant | Sauna | Solarium | SPA | Steam / Turkish Bath | Swimming Pool (Indoor) | TV Lounge



DE LAS LETRAS H&R

ENTER THE WORLD OF LITERATURE AND FEEL INSPIRED.

The De las Letras H&R emerged from a renovation project, by the architect Virginia Figueras, of a 1917 building situated on the emblematic Gran Vía of the Spanish capital and acknowledged as Madrid historical heritage.

Completely refurbished, the hotel pays homage to the worlds of art, culture and literature. Reflecting this, the library and reading room for guests, as well as the interior design of the rooms, all of which face the avenues, combine quotations from famous authors with attractive state of the art design.

At the hotel one may still have the pleasure of appreciating a fascinating collection of unique antique tiles, carpentry and balconies perfectly woven into the bold and innovative interior design.

The hotel's restaurant, directly and independently accessible, presents itself as a cornerstone to the hotel, offering a youthful and comfortable ambiance that believes in the fusion between leisure, culture and gastronomy that originates glamorous gastronomy.

When in the heart of Madrid, don't miss the opportunity to wander through the city, visiting its renowned museums, monuments and palaces during the day. During the evening there is a variety of bars, restaurants and clubs to guarantee an amazing night out.



SPAIN - MADRID

ADDRESS:
Gran Vía, 11
28013 Madrid
Spain

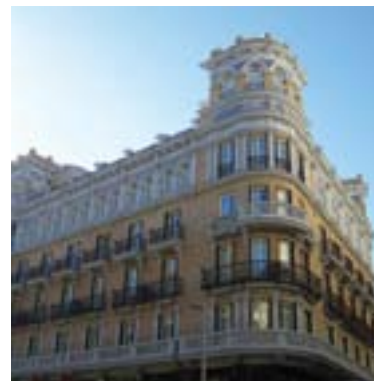
GPS: 40° 25' 10.78" N | 03° 41' 58.39" W

Website: <http://delasletras.arteh-hotels.com>

FACILITIES

Rooms: 96 | Suites: 7

Bar | Event Space(s) | Gym / Fitness Area | Internet Access |
Jacuzzi | Laundry | Library | Messages | Restaurant | Sauna |
SPA | Steam / Turkish Bath



HOSPES PALAU DE LA MAR

A COSMOPOLITAN REFUGE FOR THE FIVE SENSES.



Well integrated into the busy commercial and business area of Valencia and a mere five minutes from its historical centre, the hotel Palau de la Mar results from the refurbishment of two unique buildings belonging to a late 19th century stately house.

An authentic and seductive hotel with a cosmopolitan spirit and definite character, it transmits the values pertaining to its city, its inhabitants and even its history.

Upon arrival one beholds the classical and attractive façade, yet, once inside one is surprised by the bold and contemporary style that is also comfortable and desirable. All the spaces breathe design, inspired by the purity of the white and the imposing of its dark and minimalist furniture.

A small library is at one's disposal, ideal for reading or chatting before becoming bewitched by the innovative dishes based on local flavours and wisely prepared by the restaurant's chef.

After discovering Valencia and passing through the famous Carmen quarter, seek refuge in the palace at the end of the day to relax in the sauna or in the heated swimming pool, before setting out to discover the city's animated nightlife.

SPAIN - VALENCIA

ADDRESS:
Avinguda de Navarro Reverter, 14
46004 Valencia
Spain

GPS: 39° 28' 15.94" N | 00° 21' 59.81" W

Website: <http://palaudelamar.arteh-hotels.com>

FACILITIES

Rooms: 60 | Suites: 6

Bar | Event Space(s) | Garage | Gym / Fitness Area | Internet Access | Jacuzzi | Laundry | Library | Massages | Restaurant | Sauna | SPA | Steam / Turkish Bath | Swimming Pool (Indoor) | TV Lounge



CONVENTO DE LA PARRA

FIND SHELTER IN AN OASIS WHERE ALL DETAILS WERE DESIGNED TO ASSURE THE PERFECT REST.

Nestled in the ample plains of the Spanish Extremadura, very close to Badajoz, is the quiet 17th century Convento de La Parra, former home of the order of Saint Clara.

It is today, after undergoing a long and careful conversion, a hotel that perfectly combines the convent's past life with contemporary decor and design. The attention given to the minutiae is evident given that these spaces are simple, yet filled with details and absolute charm.

White predominates on walls, bed linen, sofas, chairs and even flowers, harmoniously contrasting with the convent's original materials, clay, wood and iron. Silence also predominates, but it's always accompanied by the refreshing sound of the water running through the Arabic fountains.

This ancient convent has been superbly refurbished. The former monastic cells, placed around the central cloister, are now cosy sitting areas and comfortable rooms. The area once taken by the convent's vegetable garden is now a refreshing swimming pool surrounded by cosy mats. The ancient refectory has been transformed into a unique dining room.

During your stay at Convento de La Parra, delight in the gastronomy of the region specialities prepared by the restaurant and enjoy the opportunity of visiting the varied localities and castles nearby.



SPAIN - BADAJOZ - LA PARRA

ADDRESS:
Santa María, 16 - La Parra
06176 Badajoz
Spain

GPS: 38° 31' 18.04" N | 06° 37' 30.75" W

Website: <http://conventodelaparra.arteh-hotels.com>

FACILITIES

Rooms: 19 | Suites: 2

Event Space(s) | Internet Access | Library | Restaurant |
Swimming Pool



CASA PALACIO CONDE DE LA CORTE

COLOUR AND TRADITION IN AN AMBIANCE OF ARISTOCRATIC STYLE.



Surrounded by Modernist and Neo-Plateresque buildings in the centre of the lordly town of Zafra, the small Seville, the Casa Palacio Conde de la Corte stands out, having been converted into a unique and classically charming hotel.

Built in 1840, this house was the residence of Don Agustín Mendoza y Montero, Conde de la Corte, and in the middle decades of the past century was a regional centre for promoting bullfighting, an art that has always been associated to this family.

The house was restored without losing the proprietors' bull breeding spirit, maintaining the traditional architecture and details of its history. Attention was given to the lighting and the colours, creating aristocratic and comfortable spaces.

The rooms, named after different cattle breeds, have big windows, period furniture, tapestries and English style textiles. The bathrooms are large, with high ceilings and display original colour schemes.

Take the opportunity to read a book in the library, enjoy a coffee on the terrace, dive into the small pool or rest in the glass-seathed galleries, always in the capable hands of a smiling and attentive team.



SPAIN - BADAJOZ - ZAFRA

ADDRESS:
Plaza del Pilar Redondo, 2
06300 Zafra - Badajoz
Spain

GPS: 38° 25' 35.02" N | 06° 25' 06.11" W

Website: <http://casapalaciocondedelacorte.arteh-hotels.com>

FACILITIES

Rooms: 14 | Suites: 1

Bar | Event Space(s) | Fireplace | Garden | Internet Access |
Laundry | Library | Solarium | Swimming Pool

HOSPES AMÉRIGO

THE CHARM OF HISTORY WITH AVANT-GARDE DETAILS.

The hotel Hospes Amérigo was born in the former Dominican Convent of Alicante, the capital of Spain's Costa Blanca, after a history that is characterised by various transformations. From being a convent it became an office block and was later converted into an apartment building.

This space has been completely restored and renovated. The Amérigo now combines the sober character of its past with the most recent avant-garde tendencies in interior design. The outcome is the creation of a contemporary innovative and elegant atmosphere which inspires and tranquilises.

The hotel offers you comfortable rooms that are fully equipped, sauna, solarium and an amazing rooftop terrace with a heated swimming pool and the city's secular castle in the background. For companies the hotel provides as well exclusive rooms for special meetings.

At the end of the afternoon, enjoy the delicious "tapas" at the bar while the chef prepares your dinner with the best quality ingredients. In the evening enjoy your night cap in good company at the piano-bar.

You may occupy your day by becoming acquainted with the Mediterranean surroundings and culture of Alicante, benefiting from the sun on the Paseo Marítimo, the sea at Postiguet beach or exploring the Medieval castle of Santa Bárbara.



SPAIN - ALICANTE

ADDRESS:
C/ Rafael Altamira, 7
03002 Alicante
Spain

GPS: 38° 20' 39.78" N | 00° 28' 57.45" W

Website: <http://hospesamerigo.arteh-hotels.com>

FACILITIES

Rooms: 77 | Suites: 3

Bar | Event Space(s) | Gym / Fitness Area | Internet Access |
Laundry | Library | Massages | Private Car Park | Restaurant |
Sauna | Solarium | SPA | Swimming Pool (Roof Top)



LAS CASAS DEL CÓNSUL

TRAVEL TO THE PAST AND EXPERIENCE LIVING LIKE NOBILITY.



The hotel Las Casas del Cónsul is located in city of Úbeda, in Andalusía, a city whose wealth of historical buildings and emblematic monuments guaranteed its status as a World Heritage site.

The house dates from the 17th century and carries the Molina Family Crest, the most powerful family during the city's period of greatest splendour. Surrounded by large courtyards and walls that are hundreds of years old, its architecture is typical of the Renaissance and the atmosphere is surprisingly quiet.

The refurbishment was conceived to offer greater comfort and tranquillity to the guests, taking full advantage of the ample windows and high ceilings, of the tropical hardwoods and the walls of centuries-old stone. Ample public spaces were also created, designed for mingling and rest.

As in most Spanish houses of this period, the central courtyard, with its columns, is the backbone of the house, the centre around which the nobility's family-life would revolve. Today all the hotel's spacious and comfortable rooms open out onto this patio. There is still another patio with a magnificent garden that envelops the swimming pool in diverse flowers and trees and is an invitation to bathe in both the sun and the water.

Both the most modern commercial area and the city's historical centre can be found in the vicinity of the hotel, the ideal setting for enriching cultural strolls that will perfectly complement your stay at the Las Casas del Cónsul.

SPAIN - JAÉN - ÚBEDA

ADDRESS:
Plaza del Marqués, 5
23400 Úbeda - Jaén
Spain

GPS: 38° 00' 32.77" N | 03° 22' 19.50" W

Website: <http://lascasasdelconsul.arteh-hotels.com>

FACILITIES

Rooms: 8 | Suites: 1

Event Space(s) | Games Room | Garden | Internet Access |
Laundry | Library | Massages | Solarium | Swimming Pool |
TV Lounge



HOSPES PALACIO DEL BAILÍO

AN INSPIRING BALANCE BETWEEN A CLASSICAL PAST AND A MODERN PRESENT.

Protected by the historical buildings of Cordoba one discovers the Palacio del Bailío, a listed monument of cultural interest and a magnificent hotel that brings design, history, space and light into harmony.

Built between the 16th and 17th centuries this palace was renovated and redecorated in a modern style, evolving in time without losing the charm of its past. Valuable original paintings and archaeological traces were restored and the former stables, barns and coach houses were also recuperated.

This attractive contrast between the old and the new is visible throughout the building, in the shared and leisure areas, like the restaurant or the bars, but also in the design of the comfortable rooms.

The aromatic and welcoming inner courtyards, replete with lemon and orange trees, as well as the Bodyna SPA situated in the former Roman baths that served as the inspiration for the massages and treatments offered, all deserve highlighting.

Either strolling or cycling through the narrow streets, admire the white walls and colourful patios and appreciate the testimonies of the Roman and Arab cultures that passed through the city. The Palacio del Bailío and Cordoba invite you to travel through time.



SPAIN - CORDOBA

ADDRESS:

C/ Ramírez de las Casas Deza, 10 - 12
14001 Córdoba
Spain

GPS: 37° 53' 14.43" N | 04° 46' 39.76" W

Website: <http://palaciodelbailio.arteh-hotels.com>

FACILITIES

Rooms: 45 | Suites: 8

Bar | Event Space(s) | Garden | Internet Access | Laundry |
Library | Massages | Private Car Park | Restaurant | Sauna |
Solarium | SPA | Steam / Turkish Bath | Swimming Pool



HOTEL CASA DE CARMONA

LIVE LIKE ROYALTY AND SAVOUR RENAISSANCE LUXURY.



Since 1561 there has been a Renaissance palace in the historical Spanish city of Carmona. After careful and detailed restoration, the ruins of this palace were transformed into the luxurious and distinguished Hotel Casa de Carmona.

The main goal of this restoration was to preserve all the palace's details and original spaces dating back to the 16th century, incorporating elements of modern comfort that would not interfere with the building's classical style.

The decor, inspired by the Renaissance architecture, combines the Arabic style with several other influences. The rooms reflect these perfect combinations with the convergence of period furniture and original canvases and paintings. All the spaces are grandiose, special reference is due to the four indoor patios, all with fountains and replete with flowers.

At the restaurant, lodged in the palace's former stable, the tables are British, the chairs were crafted by a famous carpenter from Carmona, the dishware is from Seville and the cutlery is imported from Cagliari. A luxurious combination that perfectly combines with the refined and traditional cuisine.

The geographical environment is an open invitation to visit the museums and monuments of the historical centres of the cities of Carmona and Seville. A walk through nature is also highly recommended at the Doñana natural park.



SPAIN - SEVILLE - CARMONA

ADDRESS:
Plaza de Lasso, 1 - Carmona
41410 Sevilla
Spain

GPS: 37° 28' 28.91" N | 05° 38' 17.89" W

Website: <http://hotelcasadecarmona.arteh-hotels.com>

FACILITIES

Rooms: 23 | Suites: 9

Event Space(s) | Garden | Internet Access | Laundry |
Library | Massages | Pets Allowed | Private Car Park |
Restaurant | Swimming Pool

HOSPES LAS CASAS DEL REY DE BAEZA

A SOPHISTICATED AND STYLISH ANDALUSIAN PATIO.

Located on a historical building in the tourist centre of the vibrant city of Seville, the hotel Las Casas del Rey de Baeza, is surprising due to the sophisticated and accomplished mixture of elements from the past with those from the present, as well as also reflecting the best that the Arabic and European styles have to offer.

The contrasting balance between pure, immaculate tones of white and blue, with a few shades of ochre and reds, that are characteristic of the region of Andalusia, are notoriously present in every corner.

The rooms reflect a contemporary ambiance invaded by natural colours that recreate modern and relaxing environments. The furniture take on a chocolaty hue and the floor is covered in stone. Through the air a warm intimate light wanders.

The comfortable living room and the charming library are ideal for moments of rest or for reading. On the top floor there's the delightful terrace, the perfect spot for refreshment at the pool with a magnificent view over the Giralda.

A few steps from the hotel, museums and historical monuments beckon the imperative walks through the Barrio de Santa Cruz to the Cathedral or the Giralda. For dinner, enjoy great service and savour the unforgettable tastes of the region, a speciality of the restaurant at the hotel.



SPAIN - SEVILLE

ADDRESS:

C/ Santiago - Plaza Jesús de la Redención, 2
41003 Sevilla
Spain

GPS: 37° 23' 29.57" N | 05° 59' 11.47" W

Website: <http://lascasasdelreydebaeza.arteh-hotels.com>

FACILITIES

Rooms: 36 | Suites: 5

Bar | Event Space(s) | Internet Access | Laundry | Library |
Massages | Private Car Park | Restaurant | Solarium |
Swimming Pool (Roof Top)



HOSPES PALACIO DE LOS PATOS

LET YOURSELF BE CARRIED AWAY BY THE SENSATIONS THIS URBAN OASIS INSPIRES.



In the centre of Granada a unique Neo-Classical building from the second half of the 20th century stands out, presently converted into the surprising hotel Palacio de los Patos.

A part of the city's cultural and historical heritage, this palace has undergone intense restoration work to recover its glow and charm of yesteryear in order to now envelope us in an atmosphere of stylish magic.

The fusion of classical and original architecture with modern design details is pure genius. The rooms and spaces are ample, bright and perfect, replete with luxurious and comfortable details. The service is refined and exceptional.

Savour a meal at the gastronomic restaurant, relax in the terrace or at the bar, admire the Arabic gardens and get carried away by the sensations evoked by the SPA treatments.

Getting acquainted with Granada is obligatory. Walk through the white marble swans that guard the entrance to the palace and set out to discover the city, the rich cathedral, the picturesque Jewish quarter and the millenary Alhambra. In the distance Sierra Nevada comes into sight, a point of departure for intense sports activities both in the Winter and the Summer.



SPAIN - GRANADA

ADDRESS:
C/ Solarillo de Gracia, 1
18002 Granada
Spain

GPS: 37° 10' 20.05" N | 03° 36' 10.72" W

Website: <http://palaciodelospatos.arteh-hotels.com>

FACILITIES

Rooms: 32 | Suites: 10

Bar | Event Space(s) | Internet Access | Jacuzzi | Laundry |
Library | Massages | Private Car Park | Restaurant | Sauna | SPA |
Steam / Turkish Bath | Swimming Pool (Indoor)

BARCELÓ LA BOBADILLA

FIND LUXURY AND LOSE YOURSELF IN PURE NATURE.

Deep in the heart of Andalusia, between the towns of Cordoba, Malaga, Seville and Granada, is the luxurious hotel La Bobadilla, fruit of the philosophy and vision of the famous architect from Granada, Jesús del Valle.

Perfectly in harmony with nature, this hotel can be found in a magnificent 350 hectares private sanctuary, replete with hills and valleys covered in wild flowers, aromatic herbs, olive trees, almond trees and holm oaks. This paradise is also home to several species of birds and deer that may be seen during hikes, cycling or horseback riding.

The different areas of the hotel are linked by picturesque labyrinthine pathways, courtyards filled with flowers and an overwhelming marble colonnade. The interior is characterised by the luxury and comfort present in all spaces and rooms, each reflecting its own unique architecture and decor.

During your stay, savour either the traditional Spanish cuisine or the haute-cuisine at one of the hotel's two distinct restaurants and also enjoy the different SPA programs developed especially for you.

Be sure to take advantage of La Bobadilla's fantastic location and set out to discover legendary cities and Andalusia's wonderful monuments.



SPAIN - GRANADA - LOJA

ADDRESS:

Finca La Bobadilla, Apartado 144 E
18300 Loja - Granada
Spain

GPS: 37° 09' 49.73" N | 04° 17' 32.04" W

Website: <http://barcelolabobadilla.arteh-hotels.com>

FACILITIES

Rooms: 26 | Suites: 44

Bar | Chapel | Children's Pool | Event Space(s) | Games Room |
Garden | Grill | Gym / Fitness Area | Internet Access |
Jacuzzi | Laundry | Massages | Pets Allowed | Private Car
Park | Restaurant | Sauna | Shop | SPA | Steam / Turkish Bath |
Swimming Pool (Indoor, Outdoor) | TV Lounge



HOTEL RURAL SANT IGNASI

APPRECIATE THE TRANQUILITY OF A REFUGE IN HARMONY WITH NATURE.



On the island of Menorca, surrounded by gardens replete with centenary and exotic species of trees and covering a vast 38 hectares, the Hotel Rural Sant Ignasi, is the ideal place to enjoy moments of tranquillity and rest in communion with nature.

The main building, which had once been the holiday home of an aristocratic family from the 18th century, has been transformed into a refuge at the guest's disposal, decorated according to the style of the architect Pedro Mayans.

The rooms, spread over three floors, recreate cosy, unique, colourful Mediterranean environments with some notorious British style influences. Some may offer a private garden, whilst others include a splendid balcony with views of the countryside, the Ciutadella and its bay.

Of unparalleled location, the guests will find themselves a mere step away from the island's exuberant beaches and will have at their disposal a large number of outdoor activities, like walks, horseback riding and water sports.

For the true gourmet a visit to the Sant Ignasi restaurant, is recommended. There the dinner can be delighted by dishes that combine the traditional delicacies of Menorca with the best signed cuisine. Afterwards, perhaps a cultural tour to visit all the Pre-historical monuments, the centennial cathedral and the town's various charming palaces.

SPAIN - BALEARIC ISLANDS - - MENORCA - CIUTADELLA

ADDRESS:

Ctra. Cala Morell, s/n - Ronda Puerto
07760 Ciutadella
Menorca - Balearic Islands
Spain

GPS: 40° 01' 30.18" N | 03° 51' 55.92" E

Website: <http://hotelruralsantignasi.arteh-hotels.com>

FACILITIES

Rooms: 16 | Suites: 9

Bar | Children's Pool | Event Space(s) | Garden | Internet Access |
Pets Allowed | Private Car Park | Restaurant | Swimming Pool



HOTEL RURAL SON MAS

SHIELDED BY WALLS FROM THE PAST, TAKE A BREAK FROM THE STRESS OF THE PRESENT.

The Son Mas, a charming country hotel integrated into 17th century buildings, completely restored and adapted to the comfort of modern times, is nestled in the rural tranquility of a 20 hectares farm and just a few kilometres away from Porto Cristo in Mallorca.

The farm's landscape, unaltered by the passage of time, includes centuries old holm oaks and olive trees, as well as orange trees amongst the other fruit trees in the orchard. At the hotel an old windmill and a former look-out tower stand out. The austere walls and the stone fences should also be highlighted, conferring an image of solidity and security.

All the rooms, of ample sizes, with a sitting room and a terrace or a balcony, are individually decorated and styled, with a combination of antique furniture and practical contemporary design.

Enjoy walking, cycling or diving into the refreshing swimming pool surrounded by almond trees. On colder days, there's an interior heated swimming pool, the sauna or a relaxing massage to try out.

The Son Mas is just minutes away from tiny beaches and bays, and also very close to golf courses. The activities are limitless and include water sports, hot-air balloon rides, cultural excursions or even unforgettable visits to surprising caverns



SPAIN - BALEARIC ISLANDS -
- MALLORCA - PORTO CRISTO

ADDRESS:

Ctra. Porto Cristo - Porto Colom - Camí de Son Mas
07680 Porto Cristo
Mallorca - Balearic Islands
Spain

GPS: 39° 31' 41.64" N | 03° 16' 48.50" E

Website: <http://hotelruralsonmas.arteh-hotels.com>

FACILITIES

Suites: 16

Bar | Event Space(s) | Fireplace | Garden | Internet Access |
Jacuzzi | Laundry | Massages | Pets Allowed | Private Car Park |
Restaurant | Sauna | Swimming Pool (Indoor, Outdoor)



HOSPES MARICEL

THE FUSION OF SEA AND SKY IN A NEVER-ENDING HORIZON.



Close to the City of Palma on the island of Mallorca the hotel Hospes Maricel stands out. Established in an elegant stately house inspired by the regional architecture of the 16th and 17th century it awe-inspiringly faces the sea.

In the recent past the building has been the venue for great celebrations and select international events, which now contrast with the tranquil mood of a hotel conceived to cater to the well-being of its customers and to optimise the never-ending horizon.

All the rooms are comfortable, spacious and bright, and also benefit from simple design and light hued textures. Looking through your window, the sun setting on the crystalline Mediterranean is sure to amaze.

Picture yourself enjoying a heavenly breakfast overlooking the sea shortly followed by a dip in the panoramic swimming pool that effortlessly blends into the sky. Now, imagine the sensations of an oriental massage in a small cavern after having arrived at the hotel's private pier in your boat. At the Maricel this is a reality.

Nonetheless don't forsake a stroll through the island of Mallorca to uncover its natural secrets, the invitation of a refreshing swim at one of the numerous beaches nestled into tiny coves or the fantastic caves where you may even listen to a unique musical concert.

SPAIN - BALEARIC ISLANDS - - MALLORCA - CALVIÀ

ADDRESS:

Ctra. d'Andratx, 11

07184 Calvià

Mallorca - Balearic Islands

Spain

GPS: 39° 32' 51.04" N | 02° 35' 45.53" E

Website: <http://hospesmaricel.arteh-hotels.com>

FACILITIES

Rooms: 24 | Suites: 5

Bar | Event Space(s) | Internet Access | Jacuzzi | Laundry | Library |
Private Car Park | Private Pier | Restaurant | Sauna | Solarium |
SPA | Steam / Turkish Bath | Swimming Pool



HOTEL RURAL ES CUCONS

TOUCH THE RUSTIC CHARM AND FEEL THE CHIC SPIRIT OF RURAL IBIZA.

It's in the countryside and interior of the island of Ibiza, in Santa Agnes, that travellers will find the Hotel Rural Es Cucons, a refuge of absolute charm for everyone who loves contact with nature, peace and romance.

This hotel is the result of the renewal of a magnificent country house, dated from 1652, and is the fruit of the owners' desire of creating a place full of tranquillity, in harmony with the environment, with a rustic feel and a chic detailed interior design.

The rooms and suites have a personalized and individual touch, in the decoration as well as in the architecture, and regional materials were used. The restaurant with terrace offers a creative Mediterranean gastronomy, lighter during the day and more elaborate at night, romantically accompanied by candle light and selected music.

In the gardens you may enjoy the swimming pool surrounded by tempting and comfortable beds, while you savour a refreshing juice or cocktail. You may also surrender yourself to the hands of the masseuse or discover your inner equilibrium in Yoga and meditation classes with a view of the countryside.

Wherever you go, you'll find varied art by artists who live on the island, be they nationals or foreigners. If you fall in love with some of these paintings or sculptures, pieces of furniture or exclusive lighting, you will be able to buy them and take a little of the unforgettable spirit of Es Cucons with you.



SPAIN - BALEARIC ISLANDS - IBIZA -
- SANTA AGNES

ADDRESS:

Cami des Pla de Corona, s/n
07828 Santa Agnes
Ibiza - Balearic Islands
Spain

GPS: 39° 01' 45.60" N | 01° 19' 08.27" E

Website: <http://hotelruralescucons.arteh-hotels.com>

FACILITIES

Rooms: 7 | Suites: 8

Bar | Children's Pool | Internet Access | Jacuzzi | Laundry |
Library | Massages | Restaurant | Sauna | Shop | Solarium |
TV Lounge



QUILIBRA AGUAS DE IBIZA

CONTEMPORARY CHILL OUT SPIRIT IN AN ECO-LUXURY AMBIANCE.



Situated in the vibrant island of Ibiza, in the tranquil marina of Santa Eulalia del Río, surrounded by green gardens and with the blue sea as a backdrop, we present the exclusive Quilibra Aguas of Ibiza, an eco-luxury hotel.

This concept bets on respecting and integrating the environment, on optimizing and using renewable energies, without forgetting a high level of service, comfort and luxury offered to guests.

The building has an attractive and simple aesthetics, with contemporary interiors which follow Feng Shui guidelines. In the rooms and suites we appreciate the natural brightness, the view of the bay and sea up to the island of Formentera, the relaxing decoration in cream tones and oriental details with a Mediterranean touch.

There are two restaurants at your disposal, one in creative homage to the island's specialties and another that offers you flavours from the Mediterranean cuisine. You may also appreciate "tapas" and wine in the lounge and enter the chill out spirit of the terrace. In the SPA, the treatments with Formentera's mud and Ibiza salts are recommended for your revitalization.

Don't miss the opportunity to have fun in the island's famous nocturnal life, but during the day take time to discover the old city, the beaches and marvelous inlets, the high cliffs over the sea and the winding roads in the country side of surprising Ibiza.



SPAIN - BALEARIC ISLANDS - IBIZA -
- SANTA EULALIA DEL RÍO

ADDRESS:

C/ Salvador Camacho, s/n
07840 Santa Eulalia del Río
Ibiza - Balearic Islands
Spain

GPS: 38° 59' 08.84" N | 01° 32' 35.67" E

Website: <http://quilibraaguasdeibiza.arteh-hotels.com>

FACILITIES

Rooms: 36 | Suites: 74

Bar | Event Space(s) | Fireplace | Garage | Garden | Gym / Fitness
Area | Internet Access | Jacuzzi | Massages | Restaurant | Sauna |
Solarium | SPA | Swimming Pool (Indoor, Outdoor)

THE MUST HOTELS



BY ARTEH®

THE NETHERLANDS



WWW.ARTEH-HOTELS.COM

THE DYLAN

A THEATRE OF STYLE, ELEGANCE AND SENSUALITY.



Built in one of Amsterdam's historical landmarks close to the Keizersgracht, one of the city's famous canals, the hotel Dylan is an intimate retreat brimming with urban sophistication and personalized service.

For 150 years this place was home to the Dutch Theatre Academy until a fire destroyed it in 1778. After that it became the property of a Church charity project until the late 20th century when it was converted into a hotel.

The architectural refurbishment of the building respected the past and embraced its new future and the interior design conceived a set of welcoming spaces imbued with chic elegance. In the themed rooms, colours, textures and moods were intertwined to allow the visitor to experience unique and sensual settings.

Hidden away behind the building are a private patio with a small garden, a bar and a famous restaurant. The French inspired cuisine fuses traditional and modern elements to create dishes that are dramatic in their presentation and surprising in their flavours.

A short distance away, either on foot or on one of the hotel bikes, are the city's main attractions. Wander through picturesque streets and canals, enter Anne Frank's house or the Van Gogh museum, and discover the stores and cafés of the hospitable Amsterdam until the curtain fall at The Dylan.



THE NETHERLANDS - AMSTERDAM

ADDRESS:
Keizersgracht, 384
1016 GB Amsterdam
The Netherlands

GPS: 52° 22' 08.98" N | 04° 53' 03.45" E

Website: <http://thedylan.arteh-hotels.com>

FACILITIES

Rooms: 33 | Suites: 8

Bar | Event Space(s) | Fireplace | Garden | Gym / Fitness Area |
Internet Access | Laundry | Massages | Restaurant

THE MUST HOTELS



BY ARTEH®

UNITED KINGDOM
ENGLAND



WWW.ARTEH-HOTELS.COM

SANCTUM SOHO HOTEL

GLAMOUR, EXTRAVAGANCE AND STYLE AT THE WEST END.



The Sanctum Soho Hotel is an oasis of comfort, style and sophistication located in London's West End, minutes away from the theaters, the shops from Regent, Bond and Oxford streets, and from the desirable haunts of Soho and Mayfair.

Two beautiful Georgian buildings gave place to this sumptuous boutique hotel that celebrates edgy glamour and individuality, in homage to Soho's historic connection to bohemian and artistic life. In the interior, Lesley Purcell's decoration is complemented with ever changing artwork from Xavier Pick, a London based artist.

A distinct and extravagant personality was given to the rooms. We may find dark velvets and rich veneers, Art Deco settings with mirrored columns and glass-beaded wallpaper, or satin and pale rose Rococo fantasies.

The No. 20 bar and restaurant, with classic lines and timeless glamour details, is by itself a recommended destination. Have a cocktail or one of the selected wines, before being taken to your table to appreciate one of chef Noel Capps' modern British dishes.

Don't miss the cinema room and the intimate and cozy lounge on the top of the hotel. Here the doors open onto an unexpected garden, with hydro spa and ideal places to relax before a perfect night in London.

UNITED KINGDOM - ENGLAND -
- LONDON

ADDRESS:
20 Warwick Street
W1B 5NF London
United Kingdom - England

GPS: 51° 29' 32.79" N | 00° 08' 21.06" W

Website: <http://sanctumsohohotel.arteh-hotels.com>

FACILITIES

Rooms: 21 | Suites: 9

Bar | Event Space(s) | Fireplace | Garden | Internet Access |
Jacuzzi | Laundry | Massages | Restaurant



THE GORING HOTEL

EXPERIENCE QUINTESSENTIAL ENGLISH SERVICE AND LUXURY.

It's in the heart of Belgravia in London, near the Buckingham Palace, that The Goring Hotel is to be found. This refuge of classical luxury is the estate of the Goring family that is proud to receive guests with an attentive and exemplary service since 1910.

The building, of Edwardian Baroque style, was designed by the architect John Evelyn Trollope. In its interior a classical English decoration of refined elegance stands out and soothes us in the rooms and suites.

In the restaurant we may experience the best of English cuisine, prepared with rigorously selected British ingredients, in a magnificent environment created by David Linley and inspired by the Cecil Beaton's famous photograph of "Debutants".

In the Garden Bar area three distinct atmospheres are offered. A renovated bar, the brilliant imperial style creation of designer Tim Gosling, a luminous terrace with views to the garden and ideal for "al fresco" dinners, and a spacious and comfortable lounge.

The hotel's central location invites relaxing walks in the parks, shopping in the best stores and discovering the most recent plays in the vibrant city of London.



UNITED KINGDOM - ENGLAND -
- LONDON

ADDRESS:
15 Beeston Place - Grosvenor Gardens
SW1W 0JW London
United Kingdom - England

GPS: 51° 29' 51.29" N | 00° 08' 45.05" W

Website: <http://thegoringhotel.arteh-hotels.com>

FACILITIES

Rooms: 63 | Suites: 7

Bar | Event Space(s) | Fireplace | Garden | Internet Access |
Laundry | Private Car Park | Restaurant



THE MUST HOTELS



BY ARTEH®

FACILITIES

THE MUST HOTELS



BY ARTEH®

- Bar
- Chapel
- Children's Pool
- Croquet Field
- Driving Range
- Event Space(s)
- Fireplace
- Games Room
- Garage
- Garden
- Golf Course
- Grill
- Gym / Fitness Area
- Health Club
- Heliport
- Internet Access
- Jacuzzi
- Laundry
- Library
- Massages
- Minigolf Course
- Paddle Court
- Pets Allowed
- Private Car Park
- Private Pier
- Putting Green
- Restaurant
- Sauna
- Shop
- Solarium
- SPA
- Squash Court
- Steam/Turkish Bath
- Swimming Pool
- Tennis Court
- TV Lounge

ANDORRA

Hotel Grau Roig / Grau Roig

BRAZIL

Pousada Vila Kalango / Jericoacoara

Pousada Rancho do Peixe / Jericoacoara - Praia Beach

Toca da Coruja / Tibau do Sul - Pipa Beach

Kenoa Exclusive Beach SPA & Resort / Barra de São Miguel

Tivoli Ecoresort Praia do Forte / Mata de São João - Forte Beach

Brava Hotel / Búzios - Armação de Búzios

FRANCE

Hôtel Le Lavoisier / Paris

Hospes Lancaster / Paris

Hôtel Fouquet's Barrière / Paris

Pershing Hall / Paris

Hôtel Duo / Paris

Hôtel Sezz Paris / Paris

Hôtel Avenue Lodge / Val d'Isère

Hôtel Sezz Saint-Tropez / Saint-Tropez

INDIA

Rambagh Palace / Jaipur

Umaid Bhawan Palace / Jodhpur

Taj Lake Palace / Udaipur

Taj Falaknuma Palace / Hyderabad

THE MUST HOTELS



BY ARTEH®

PORTUGAL

	Hotel Britania / Lisbon	Hotel Lisboa Plaza / Lisbon	Tivoli Jardim / Lisbon	Heritage Av Liberdade / Lisbon	Solar do Castelo / Lisbon	Bairro Alto Hotel / Lisbon	Pestana Palace / Lisbon	York House / Lisbon	As Janelas Verdes / Lisbon	Altis Belém Hotel & SPA / Lisbon	Pátio dos Solares / Estremoz	Pousada Nossa Senhora da Assunção / Arraiolos	Pousada Dom João IV / Vila Viçosa	Convento de São Paulo / Redondo	Convento do Espinheiro / Évora	MAR De AR Aqueduto / Évora	Pousada Dom Afonso II / Alcácer do Sal	Pousada Vale do Gaió / Torrão	Hotel Dom Carlos Regis / Monchique	Hotel Central / Monchique	Estalagem Dom Lourenço / Monchique	Vila Joya / Albufeira - Guia	Pousada Convento da Graça / Tavira	Pousada Palácio de Estoi / Faro - Estoi	Monte do Casal / Faro - Estoi	Pousada Infante / Sagres	Memmo Baleeira / Sagres	Quinta das Mercês / Azores - Terceira	Pousada São Sebastião / Azores - Terceira	
Bar																														
Chapel																														
Children's Pool																														
Croquet Field																														
Driving Range																														
Event Space(s)																														
Fireplace																														
Games Room																														
Garage																														
Garden																														
Golf Course																														
Grill																														
Gym / Fitness Area																														
Health Club																														
Heliport																														
Internet Access																														
Jacuzzi																														
Laundry																														
Library																														
Massages																														
Minigolf Course																														
Paddle Court																														
Pets Allowed																														
Private Car Park																														
Private Pier																														
Putting Green																														
Restaurant																														
Sauna																														
Shop																														
Solarium																														
SPA																														
Squash Court																														
Steam/Turkish Bath																														
Swimming Pool																														
Tennis Court																														
TV Lounge																														

R - Upon Request

ARTEH® PREFERRED

LIFESTYLE & LUXURY

Each time you book your ARTEH® Hotel stay directly through ARTEH®, you will earn valuable Preferred Points which you can use to exchange for exquisite Gifts, luxurious Items and wonderful Experiences from the ARTEH® Preferred Shop.

Simply book your stay directly through ARTEH® and you will begin to collect Preferred Points. In general you will earn one Preferred Point for each Euro you spend. On the ARTEH® Website you will find published the amount of Preferred Points you can earn with each booking.

You will be surprised by how quickly your points add up. Check your Preferred Account balance to view your points and transactions, then visit the ARTEH® Preferred Shop to view the Gifts, Items and Experiences you can reward yourself with by exchanging the Preferred Points you collected.

WWW.ARTEH-HOTELS.COM

LIFESTYLE & LUXURY



Welcome to ARTEH® Preferred,
a special membership designed to say “thank you” to all ARTEH® clients.

WWW.ARTEH-HOTELS.COM

CREDITS

HOTEL INFORMATION, PROMOTIONS,
SPECIAL OFFERS, RESERVATIONS AND NEWS:

Website: www.arteh-hotels.com
Tel.: + 351 21 780 34 70
Fax: + 351 21 780 34 79
eMail: info@arteh-hotels.com

ARTEHby - Hotelaria e Turismo, S.A.
Av. Defensores de Chaves, 56 - 1º
1000-121 Lisboa
Portugal

PROJECT:

ARTEH® - Hotels and Resorts.

DESIGN:

AQUABRANDING Serviços de Comunicação.

TEXTS:

ARTEH® - Hotels and Resorts.

PHOTOGRAPHY:

Cover:

Photo of Areias do Seixo.

Back-Cover:

Photos from Taj Lake Palace, The Vine Hotel, Hotel Fouquet's Barrière and Hospes Palacio de los Patos.

Hotels in Andorra, Brazil, Morocco, South Africa, The Netherlands and United Kingdom - England:

Photos supplied by the hotels.

Hotels in France:

Hospes Lancaster - photos supplied by Hospes.

Hotel Fouquet's Barrière - photos from Groupe Lucien Barrière & Casino library, supplied by the hotel.

Hotel Sezz Paris and Hotel Sezz Saint-Tropez - photos by Manuel Zublena, supplied by the hotels.

All other hotels - photos supplied by the hotels.

Hotels in India:

Photos supplied by Taj.

Hotels in Italy:

Hotel Regency and Hotel Lord Byron - photos by Moreno Maggi, supplied by the hotels.

All other hotels - photos supplied by the hotels.

Hotels in Portugal:

Pousada Palácio do Freixo - photos by Kees Hageman, supplied by the hotel.

Casas do Côro, Pousada Convento de Belmonte, Hotel Albatroz, Villa Albatroz, Senhora da Guia, Convento de São Paulo, Quinta das Mercês, Convento de São Francisco, Hotel do Colégio,

Choupana Hills Resort & SPA - photos by Jorge Cruz.

Bairro Alto Hotel - photos supplied by the hotel and Tiago Pinto.

Pestana Palace - photos by Alma Mollemans, supplied by the hotel.

York House - photos supplied by the hotel and Jorge Cruz.

Hotel Dom Carlos Regis, Hotel Central and Estalagem Dom Lourenço - photos by Tiago Pinto.

Pousada Convento da Graça - photos by Casa & Jardim / João Bessone, supplied by the hotel.

Estalagem da Ponta do Sol - photos supplied by the hotel and Jorge Cruz.

Quinta da Casa Branca - photos supplied by the hotel and Jorge Cruz.

All other hotels - photos supplied by the hotels.

Hotels in Spain:

Hospes Villa Paulita, Madrid, Palau de la Mar, Amérigo, Palacio del Bailío, Las Casas del Rey de

Baeza, Palacio de los Patos, Maricel and Quilibra Aguas de Ibiza - photos supplied by Hospes.

All other hotels - photos supplied by the hotels.

TRADEMARKS:

ARTEH® and **ARTEH** are registered trademarks property of ARTEHby - Hotelaria e Turismo, S.A.

ISBN:

978-989-95295-3-3

LEGAL DEPOSIT:

Nº 221584/05

COPYRIGHT:

All rights reserved. No part of this publication may be reproduced or transmitted in any form or by any means, electronic or mechanical, including photocopy, recording or any other information

storage and retrieval system, without the prior written permission from the authors.



HOTEL INFORMATION, PROMOTIONS, SPECIAL OFFERS, RESERVATIONS AND NEWS:

WEBSITE: WWW.ARTEH-HOTELS.COM

TEL.: +351 21 780 34 70

FAX: +351 21 780 34 79

EMAIL: INFO@ARTEH-HOTELS.COM

